

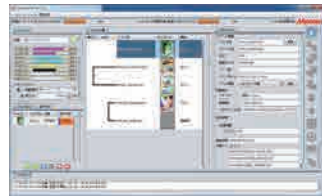
Software RIP combining usability and high performance

RasterLink6

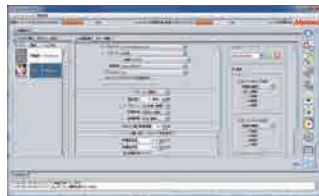
*Bundled Item

RasterLink6 features a wide range of innovative functions while improving ease of use. Anyone can use this RIP software and obtain beautiful print results without difficulty.

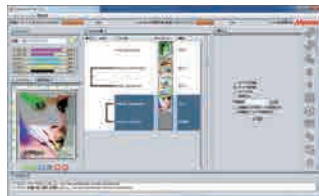
Intuitive and user-friendly operation



1 Basic setting items are indicated by icons, enabling intended operations to be performed intuitively without hesitation.



2 When clicking on the targeted icon, the screen will be changed in the same window. In addition, layout settings can be re-used at any time by implementing "Register as Favorite".



3 When printing, you can visually confirm the job progress on the main screen.

Supports Web update function.

Supports the Web update function that has been well-received in RasterLinkPro5. Program update and profile download can be easily performed via internet.

Specifications

Item		JFX500-2131
Head		On-demand Piezo head (6 printheads with 3 staggered configuration)
Print resolution		300 dpi, 600 dpi, 900 dpi, 1,200 dpi
Ink	Type	LH-100 (C, M, Y, K, W, CL)
		LUS-120 (C, M, Y, K, W, CL)
		LUS-150 (C, M, Y, K, W)
		LUS-200 (C, M, Y, K, W)
		LUS-200 (C, M, Y, K, W)
	Supply system	Supplied by 2L Ink Station
	Ink circulation (*1)	White ink circulation by MCT (Mimaki Circulation Technology)
	Ink degassing module	Equipped with MDM (Mimaki Degassing Module)
Inkjet primer		Automatically applied by PR-100/PR-200
Maximum print size (W X D)		2,100 X 3,100 mm (82.7 X 122.0")
Media	Size (W X D)	2,100 X 3,100 mm (82.7 X 122.0")
	Height	Max. 50 mm (2.0")
	Weight	Less than 50 kg (110.2 lbs.) / m ²
Media table	Air suction by vacuum	
	Vacuum area	Vertically divided into 4 zones
Print accuracy	Absolute accuracy	± 0.3 mm (0.01") or ± 0.3% from specified print distance
	Repeatability	± 0.2 mm (0.01") or ± 0.1% from specified print distance
UV unit	Equipped with UV LED (Light Emitting Diodes)	
	Lifetime (*2)	About 5,000 hours
Interface		USB2.0
Applicable standard		VCCI class A, CE Marking, CB Report, UL, RoHS Directive
Power specifications		AC 200 – 240 V, 50/60 Hz
Power consumption		Less than 2.4 kVA
Operational environment	Temperature	15 – 30 °C (59 – 86 °F)
	Humidity	35 – 65 %Rh
	Temperature accuracy	18 – 25 °C (64.4 – 77 °F)
	Temperature gradient	Less than ± 10 °C/h (18 °F)
	Dust	Equivalent to normal office level
Dimensions (W X D X H) (*3)		4,100 X 4,462 X 1,490 mm (161.4 X 175.7 X 58.7")
Weight (*3)		1,353 kg (2,982.8 lbs.)

*1 MCT works only with white ink.

*2 Reference value. There is no guarantee as to the lifetime.

*3 Ink Station is not included in the dimensions and the weight.

*4 RasterLink6 and the standard vacuum unit are bundled with the JFX500-2131.

Supplies

Item	Color	Item No.	Remarks
LH-100	Cyan	LH100-C-BA	1L bottle
	Magenta	LH100-M-BA	
	Yellow	LH100-Y-BA	
	Black	LH100-K-BA	
	White	LH100-W-BA	
LUS-120	Clear	LH100-CL-BA	1L bottle
	Cyan	LUS12-C-BA	
	Magenta	LUS12-M-BA	
	Yellow	LUS12-Y-BA	
	Black	LUS12-K-BA	
LUS-150	White	LUS12-W-BA	1L bottle
	Clear	LUS12-CL-BA	
	Cyan	LUS15-C-BA	
	Magenta	LUS15-M-BA	
	Yellow	LUS15-Y-BA	
LUS-200	Black	LUS15-K-BA	1L bottle
	White	LUS15-W-BA	
	Cyan	LUS20-C-BA	
	Magenta	LUS20-M-BA	
	Yellow	LUS20-Y-BA	
Primer	Black	LUS20-K-BA	1L bottle
	White	LUS20-W-BA	
	White	LUS20-W-BA	
PR-100		PR100-Z-BA	1L bottle
PR-200		PR200-Z-BA	
Tungsten replacement needle for ionizer		SPA-0208	4 pcs
Air filter kit		SPA-0209	10 pcs
Ink bottle 2L BK		SPA-0210	1 empty bottle

* Clear ink (LH-100) and Primers (PR-100/PR-200) are compatible with LH-100 and LUS-150 inks.

* LUS-200 ink is not compatible with Clear ink nor Primers.

* Each ink and the primers are provided in an ink bottle(1L). Please fill it into the bottle (2L) of the ink station to operate.

* Ink flexibility of LUS-120/150/200 may vary depending on printing materials. Please be sure to test on an actual material in advance.

* JFX500-2131 may not take full advantage of its print speed with LH-100.

* LH-100, LUS-120, LUS-150 and LUS-200 are GREENGUARD Gold certification ink.

Option

Item	Item No.	Remarks
Vacuum unit (3 φ . 200)	OPT-J0216	3-phase : 200 . 240 V, 30 A, 3.4 kW
Vacuum unit (1 φ . 200)	OPT-J0217	1-phase : 200 . 240 V, 30 A, 1.9 kW
Vacuum unit (3 φ . 400)	OPT-J0232	3-phase : 380 . 480 V, 20 A, 3.4 kW
Ionizer kit	OPT-J0322	For electrostatic removal
Option blower connection KIT	OPT-J0330	
PR100/200KIT FOR JFX500	OPT-J0392	Kit for using PR-100/200 primer

* Additional power source is required in order to use the vacuum unit.

* Each vacuum unit requires "Option blower connection KIT (OPT-J0330)" in order to connect to the JFX500-2131.

●Some of sample images in this brochure are simulated. ●Specifications, designs and dimensions stated in this brochure may be subject to change without notice (for technical improvements, etc.).
●All product and company names in this brochure are trademarks or registered of the respective companies. ●The printhead ejects extremely fine dots for printing, and therefore printed colors may vary after replacing the printheads. ●When using multiple printer units, printed colors would be different slightly because there is a slight difference among those units. ●The specifications described in this catalog are as of November 2018.

Mimaki
mimaki.com

MIMAKI ENGINEERING CO., LTD.

2182-3 Shigeno-otsu, Tomi-city, Nagano 389-0512, Japan
Tel: +81-268-64-2281

Mimaki Global Network

USA	MIMAKI USA, INC.	Europe	MIMAKI EUROPE B.V.
Brazil	MIMAKI BRASIL COMERCIO E IMPORTACAO LTDA	Indonesia	PT. MIMAKI INDONESIA
India	MIMAKI INDIA PRIVATE LIMITED	Australia	MIMAKI AUSTRALIA PTY. LTD.
Taiwan	MIMAKI ENGINEERING (TAIWAN) CO.,LTD.	China	SHANGHAI MIMAKI TRADING CO.,LTD.
Singapore	MIMAKI SINGAPORE PTE. LTD.		

DB20273-10

Large Format UV LED Flatbed Inkjet Printer

JFX500-2131

Mimaki
Product Brochure

Powerful combination of
Speed and Quality

MAX
60m²/h



Mimaki
Green Technology



Max Speed 60m²/h

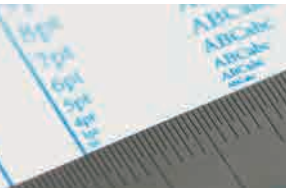
For amazing speed, the JFX500-2131 is equipped with Mimaki's latest print head and UV LED technology. Mimaki's exclusive head control technology delivers an amazing high print quality. This combination of "Speed" and "High quality" are essential for large format printers. Both of them indeed come true in the newly released JFX500-2131!

High Quality Print

IMS for highly detailed and accurate prints

2 units of Mimaki's unique highly-accurate linear scales controlled by IMS have been equipped, for fine step accuracy and dot placement. This results in far less banding artifacts and even the possibility to print legible 2 pt characters.

* Characters may be illegible depending on the media.
(IMS = Intelligent Microstepping System)



MAPS2 - A mask pattern that reduces UV curing banding

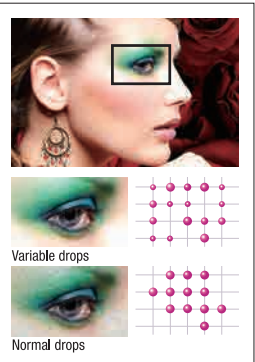
In addition to the normal pattern, you can select "MAPS2" that effectively reduces bandings. MAPS2 implements printing with generating passes, using a gradational mask pattern, the UV curing is performed more gradually and it diminishes the appearance of bandings.

(MAPS2 = Mimaki Advanced Pass System)



Smooth and beautiful gradation achieved by Mimaki's unique head control technique

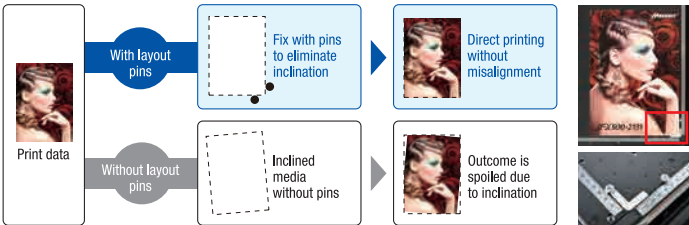
Variable drops function provides 3 different drop sizes at once. The minimum size is amazingly 7 pico-litter drop and produces smooth and natural gradation, without granular appearance even in the 4-color mode.



Easy Operations

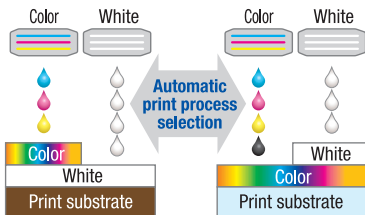
Layout pins that eliminate annoying aligning works

When placing a substrate on a flatbed, strict alignment had been required to check whether the media is not in-line with the printing surface, or whether the point of origin is aligned, etc. This machine is equipped with pins and a scale to eliminate such annoying aligning work. You fix the substrate to the pins and check the placement with the scale at first and then edit the design data or printer settings accordingly. In this way, you can implement direct UV printing without misalignment.



Reverse Print Function

Select the order of over- and under-print with white in RasterLink6, the bundled standard software RIP. The most efficient path is then determined by the software. Operators experience efficient high productivity gains without further operator intervention.



Offering vacuum unit as standard equipment

JFX500-2131 comes equipped with a vacuum unit to securely fix the substrates on the flatbed. It is also useful for preventing warpage of substrates during printing. The vacuum area is vertically divided into 4 zones and can be separately activated according to the substrates.



Vacuum control switch

Eco-Friendliness

Highly refined environmentally friendly functions

UV curing printing is an ecological printing method that hardly generates VOCs. Curing efficiency of the newly developed UV LED unit has been improved compared to that of the conventional one. It is powerful and reduces power consumption while offering much longer life cycles and increased operability. Each UV ink is supplied in high-capacity bottle. This economical and ecological package contributes to reduce amount of industrial waste and running cost.

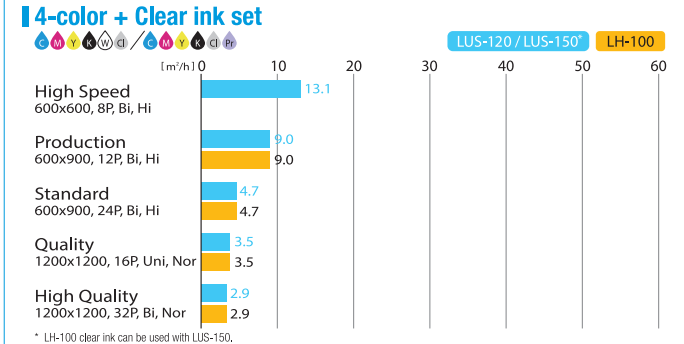
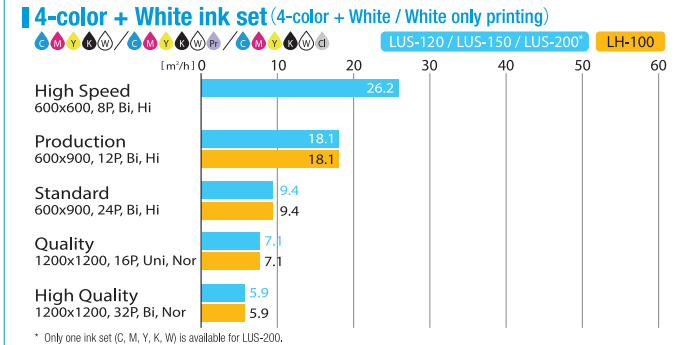
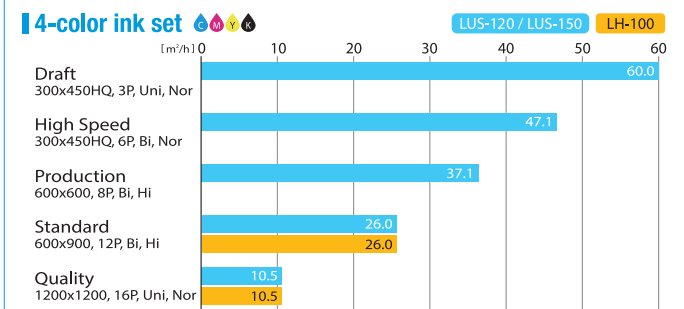


Ink Station

High Speed Print

Maximum printing speed of 60m²/h

Print Speed



Various ink selections

The JFX500-2131 is compatible with various UV ink types that have different characteristics. The optimum ink can be selected for intended applications.

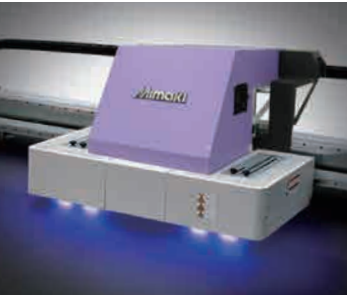
Flexible UV Ink			Hard UV Ink
LUS-200	LUS-150	LUS-120	LH-100
The LUS-200 ink has 200% stretchability after curing. The ink film retains the print quality, and will not crack even when printed materials are bent or stretched during post-print process.	The LUS-150 ink has 150% stretchability after curing. Its ink film is very flexible and will not crack during post process. This ink is compatible with a wide range of materials and has a low degree of tackiness.	The LUS-120 ink has 170% stretchability after curing. Its ink film is very flexible and will not crack during post process.	The LH-100 ink has a high scratch/chemical resistance and an accurate color reproducibility. The ink is suitable for rigid materials.

*Primer is selectable from PR-100 or PR-200.

*Ink flexibility of LUS-120/150/200 may vary depending on materials to print, please test on actual materials in advance.

Newly developed UV LED unit

The New UV LED unit is optimized and the curing efficiency of LED is improved enough to cure the ink. High speed UV printing is available with all the advantages of LED technology, such as long-life, energy savings, and lower heat generation (being able to print on a media which is easily deformed or discolored by heat).



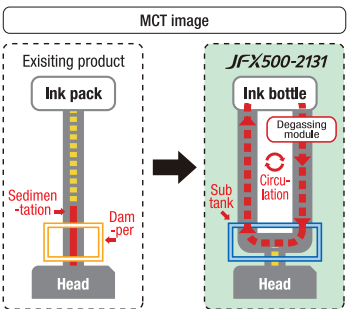
Easy Maintenance

Ink circulation, ecology & economy with the application of white ink

MCT to regularly circulate white ink is standard equipment. It enables stable output from the time of machine startup by effectively avoiding the settling of white pigment in the ink lines. Additionally, MCT contributes to reduction of ink waste, thereby supporting environmentally and economically friendly applications.

* MCT works only with white ink.

(MCT = Mimaki Circulation Technology)



Nozzle Recovery Function

Without the nozzle recovery function, when printing and nozzle clogging or failure occurs that could not be resolved by the nozzle cleaning function, printers have to wait stop until the Mimaki service team arrives. When it comes to this function, even if nozzle washing has no effect on a troubled nozzle, the print image quality can be retained immediately without slowing down the print process.

* The recoverability of this function is limited.

* When MAPS2 is activated, the nozzle recovery function is disabled.

