

Cylindrical items rotate while printing on the entire surface of the object.



UJF-3042 MkII e / UJF-3042 MkII
UJF-3042 MkII EX e / UJF-3042 MkII EX
UJF-6042 MkII e / UJF-6042 MkII
UJF-7151 plusII / UJF-7151 plus OPTION

Kebab MkII

Kebab MkII L

cylindrical objects
360°
Direct Printing!

Using the rotary rollers, the Kebab option rotates the object, allowing printing on the entire surface of the cylindrical item. Printing material and design became an integrated part of the total work.



Kebab MkII & UJF-3042 MkII

Kebab MkII Compatibility

UJF-3042 MkII e
UJF-3042 MkII EX e
UJF-3042 MkII
UJF-3042 MkII EX

Kebab MkII

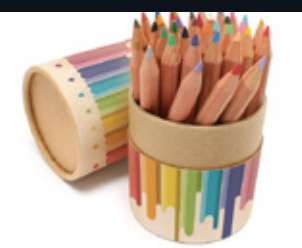
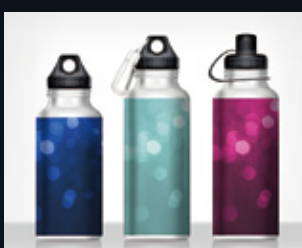
Kebab MkII L



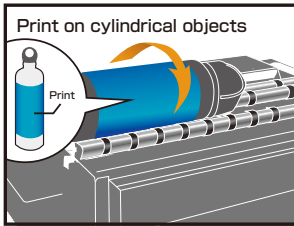
Kebab MkII L Compatibility

UJF-6042 MkII e
UJF-6042 MkII

UJF-7151 plusII
UJF-7151 plus



Easy and seamless 360° beautiful printing



Mount Kebab MkII / MkII L option to the printer and set the cylindrical object on the rollers of this option. Using the special software will automatically start printing on the entire 360° surface of your desired object. The option can be easily mounted onto the printer using the special plug and the fixing screws.



Easy mounting



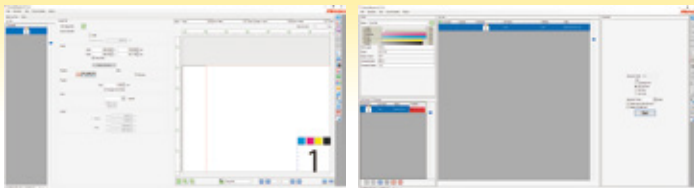
Printing on maximum 600mm length is possible! Enables printing on a variety of sizes, from standard Japanese seals to various bottles.

Kebab MkII can print on objects up to 300mm length with diameters from 10 mm to 110 mm.
The Keabab MkII L, needed for UJF-6042 MkII e / UJF-6042 MkII / UJF-7151 plusII / UJF-7151 plus, can print on objects up to 600mm length. (※) Japanese seals, candles, wine bottles, etc... infinite applications for infinite ideas!

(※) Object maximum weight / Small diameter: under 1.5kg, Large diameter: under 2kg



Raster Link 7 makes print job management simple



Specifications

Item		Keabab MK II	Keabab MK II L
Item code		OPT-J0432	OPT-J0433
Compatible printer model		UJF-3042MkII e UJF-3042MkII Ex e UJF-3042MkII / UJF-3042MkII Ex	UJF-6042MkII e / UJF-6042MkII UJF-7151 plusII / UJF-7151 plus
Rotary degree of print material		±360 degrees or more (no limitation)	
Rotation system		Rollers	
Applicable objects		Cylindrical objects (uneven surface must not affect rotation)	
Applicable roundness		0.5mm or less to protect the printer body <small>*Accuracy is not guaranteed.</small>	
Printable size		Length: 30-300mm (1.1-11.8in) Diameter: 10-110mm (0.3-4.3in)	Length: 30-600mm (1.1-23.6in) Diameter: 10-110mm (0.3-4.3in)
Printable area	Feeding direction (X)	Entire circumference of an object	
	Print head moving direction (Y)	Under 300mm (11.8in)	Under 600mm (23.6in)
Maximum weight of print material		Small diameter: 1.5 kg or less Large diameter: 2 kg or less	Small diameter: 1.5 kg or less Large diameter: 2 kg or less
Interface		Exclusive connector	
RIP		RasterLink7 / RasterLink6Plus / RasterLink6	
Weight		Approx. 3 kg (6.6lb)	Approx. 6 kg (13.2lb)
External dimensions (WxDxH)		366×301×50mm (14.4×11.8×1.9in)	674×301×50mm (26.5×11.8×1.9in)

User-friendly print settings and functions

KEBAB dedicated function ① Print image measuring

Outer circumference of a print object is automatically calculated by entering a diameter on the dedicated screen, and the ruler with a calculated circumference is displayed beside the print image accordingly.

KEBAB dedicated function ② Image scaling function

Print image is automatically scaled according to the calculated outer circumference. No calculation and scaling is required.

●Some of the samples in this catalog are artificial renderings. ●Specifications, design and dimensions stated in this catalog may be subject to change without notice (for technical improvements, etc). ●The corporate names and merchandise names written on this catalog are the trademark or registered trademark of the respective corporations. ●Inkjet printers print using extremely fine dots, so colors may vary slightly after replacement of the printing heads. Also note that if using multiple printer units, colors could vary slightly from one unit to other unit due to slight individual differences. ●The specifications described in this catalog are as of June 2022.

Mimaki
mimaki.com

MIMAKI ENGINEERING CO., LTD.

2182-3 Shigeno-otsu, Tomi-city, Nagano 389-0512, Japan
Tel: +81-268-64-2281

Mimaki Global Network

USA MIMAKI USA, INC.
Brazil MIMAKI BRASIL COMERCIO E IMPORTACAO LTDA
India MIMAKI INDIA PRIVATE LIMITED
Taiwan MIMAKI ENGINEERING (TAIWAN) CO.,LTD.
Singapore MIMAKI SINGAPORE PTE. LTD.

Europe MIMAKI EUROPE B.V.
Indonesia PT. MIMAKI INDONESIA
Australia MIMAKI AUSTRALIA PTY. LTD.
China SHANGHAI MIMAKI TRADING CO.,LTD.
Thailand MIMAKI (THAILAND) CO.,LTD.