

System requirements

**Product configuration**



**JFX200-2513 EX**

< Provided as standard >  
Supporting the beauty of prints and operability

**Raster Link 7**

USB2.0  
Ethernet  
Connection

**PC for RIP**



**Recommended specifications for PC for RIP**

OS: Windows 11\* Pro 64bit  
CPU: Intel® Core™ i5-4670K (3.4GHz)  
Chip set: Intel® Z87 Express  
Memory: 8GB  
HDD: 1TB  
Interface: Ethernet port USB1.1/2/0

Specifications

Item	JFX200-2513 EX
Head	On-demand Piezo head (Array of 3 staggered print heads)
Print resolution	300dpi, 450dpi, 600dpi, 900dpi, 1,200dpi
Ink	Type/Color
	Rigid UV curable ink LH-100
	Stretchable UV curable ink LUS-120/LUS-150/LUS-211/LUS-350
Capacity <sup>(1)</sup>	1L bottle / 250 ml bottle
Ink circulation system <sup>(2)</sup>	White ink circulation by MCT (Mimaki Circulation Technology)
Maximum printable area (W x D)	2,500 x 1,300 mm (98.4x 51.2")
Media	Size (W x D)
	2,500 x 1,300 mm (98.4x 51.2")
	Height
50 mm (2.0 ") or lower	
Weight	50 kg/m <sup>2</sup> (10.2 lb/ft <sup>2</sup> ) or less (non concentrated load)
Media Suction	Vacuum Suction + Foot Switch
Suction Areas	2 partition ( X direction)
UV method	LED-UV
Interface	USB, Ethernet
Applicable standards	VCCI class A, CE mark, CB report, U.S. safety standard UL (UL62368-1), RoHS Directive, FCC Class A, Machinery directive, EAC, RCM
Power	Single-phase AC200 to 240V, 12A or lower
Power consumption	2.88 kVA or less
Operating environment	Temperature
	15-30 degC (59 - 86 degF)
	Humidity
	35 - 65%Rh
	Optimal Temperature
20 - 25 degC (68 - 77 degF)	
Temperature Gradient	Less than ± 10 degC/h ( ± 18F/h)
Dust	Equivalent to an Office
Installatoin Dimensions (W x D x H)	4,440 x 2,250 x 1,250mm (173.2x 88.5 x 49.2")
Assembled Dimensions (W x D x H)	4,440 x 2,450 x 1,250mm (173.2 x 96.4 x 49.2")
Weight	650kg (1,433 lb)

Optional Accessories

Item	Item No.	Remarks
Ionizer kit	OPT-J0342	Static eliminator kit
Vacuum unit (φ 3mm × 200mm) (φ 0.1 in. × 7.9 in.)	OPT-J0216	Three-phase, 200 V-240 V, 30 A, 3.4kW
Vacuum unit (φ 1mm × 200mm) (φ 0.04 in. × 7.9 in.)	OPT-J0217	Single-phase, 200 V-240 V, 30 A, 1.9kW
Vacuum unit (φ 3mm × 400mm) (φ 0.1 in. × 15.7 in.)	OPT-J0232	Three-phase, 380 V-480 V, 20 A, 3.4kW
Optional blower Connector Kit	OPT-J0348	Necessary kit for connecting an optional vacuum unit
4C+4White ink applying kit	OPT-J0499	Necessary kit for 4C+4White ink set
Lift-Up Block	OPT-J0513	

\*The optional accessories available with JFX200-2513 are also compatible with JFX200-2513 EX.  
\*OPT-J0393 PR-100/PR-200KIT is not necessary to use JFX200-2513 EX.  
However when starting to use PR-200, it is necessary to replace to the pump of the initial attachment.

Inks and substrates:

- As physical properties of ink (adhesion, weather resistance etc.) are different depending on media, please be sure to have a print test in advance.
- Depending on the application, primers, other surface treatment or surface protection such as lamination may be necessary.

- Some of the samples in this catalog are artificial renderings. Specifications, design and dimensions stated in this catalog may be subject to change without notice (for technical improvements, etc). The corporate names and merchandise names written on this catalog are the trademark or registered trademark of the respective corporations. Inkjet printers print using extremely fine dots, so colors may vary slightly after replacement of the printing heads. Also note that if using multiple printer units, colors could vary slightly from one unit to other unit due to slight individual differences.
- The specifications described in this catalog are as of February 2025.

**Mimaki** MIMAKI ENGINEERING CO., LTD.  
mimaki.com  
2182-3 Shigeno-Otsu, Tomi-city, Nagano 389-0512, Japan  
TEL: +81-268-64-2281

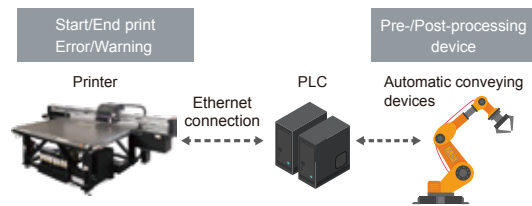
Mimaki Global Network

USA	MIMAKI USA, INC.	Europe	MIMAKI EUROPE B.V.
Brazil	MIMAKI BRASIL COMERCIO E IMPORTACAO LTDA	Indonesia	PT. MIMAKI INDONESIA
India	MIMAKI INDIA PRIVATE LIMITED	Australia	MIMAKI AUSTRALIA PTY. LTD.
Taiwan	MIMAKI ENGINEERING (TAIWAN) CO.,LTD.	China	SHANGHAI MIMAKI TRADING CO.,LTD.
Singapore	MIMAKI SINGAPORE PTE. LTD.	Thailand	MIMAKI (THAILAND) CO.,LTD.
Vietnam	MIMAKI VIETNAM CO., LTD.		

Automation of printing processes

Adaptable to "Mimaki Device Language (MDL)" to realize automation of printing processes

Using MDL commands allows you to automate printer control, job management, and workpiece conveying device operation from an external device



\*When using MDL commands, refer to the separate MDL commands manual included in the SDK.  
\*Please note that machine failures due to MDL commands may not be covered by our warranty.

Supplies

Item	Color	Item No.	Remarks
LH-100	Cyan	LH100-C-BA	Ink package: 1L bottle
	Magenta	LH100-M-BA	
	Yellow	LH100-Y-BA	
	Black	LH100-K-BA	
	Light Cyan	LH100-LC-BA	
	Light Magenta	LH100-LM-BA	
	White	LH100-W-BA	
LUS-120	Clear	LH100-CL-BA	
	Cyan	LUS12-C-BA	
	Magenta	LUS12-M-BA	
	Yellow	LUS12-Y-BA	
	Black	LUS12-K-BA	
	White	LUS12-W-BA	
	Clear	LUS12-CL-BA	
LUS-150	Cyan	LUS15-C-BA	
	Magenta	LUS15-M-BA	
	Yellow	LUS15-Y-BA	
	Black	LUS15-K-BA	
	Light Cyan	LUS15-LC-BA	
	Light Magenta	LUS15-LM-BA	
	White	LUS15-W-BA	
LUS-211 <sup>(3)</sup>	Cyan	LUS211-C-BA	
	Magenta	LUS211-M-BA	
	Yellow	LUS211-Y-BA	
	Black	LUS211-K-BA	
	White	LUS211-W-BA	
LUS-350	Clear	LUS211-CL-BA	
	Cyan	LUS35-C-BA	
	Magenta	LUS35-M-BA	
	Yellow	LUS35-Y-BA	
	Black	LUS35-K-BA	
Primer <sup>(4)</sup>	White	LUS35-W-BA	
	Clear	LUS35-CL-BA	
	PR-200	PR200-Z-BA	

\*1: LH-100, LUS-120 and PR-200 come in both 250ml and 1L bottles. \*2: MCT works only with white ink.  
\*3: LUS-211 ink is available in some regions. \*4: The PR-200 is not compatible with LUS-211 and LUS-350.  
\*Stretchability of flexible ink may vary depending on materials, please have a prior test print.  
\*LH-100, LUS-120, LUS-150 and LUS-211 are GREENGUARD Gold certification ink.

About Ethernet

- Please use Category 6 (CAT6) network cables. \*Cannot be connected through the router.
- \*When printing from ethernet, place the printer and output PC on the same network.
- \*When using a switching hub, a 1000BASE-T compatible hub is necessary.
- \*Although up to 4 printers can be registered with RasterLink7, printing may stop depending on the network environment.

Safety notice:

- This product is equipped with UV irradiation equipment. Please pay attention to the following notes in order to use safely.
- Do not look directly into the UV light source nor place your hand, or expose your skin directly to the UV light source.
- Depending upon print mode, some VOC emittance from printed parts not yet cured and hardened may occur.
- In addition, please be sure to read and follow the instructions and guidelines of the manual carefully.

For  
INDUSTRIAL  
PRODUCTS

LED-UV Curing Flatbed Inkjet Printer



**JFX200-2513 EX**

Entry model combining high added-value and high productivity



Feel the texture!



Semi-stereoscopic 2.5D printing increases utility!



# JFX200-2513 EX

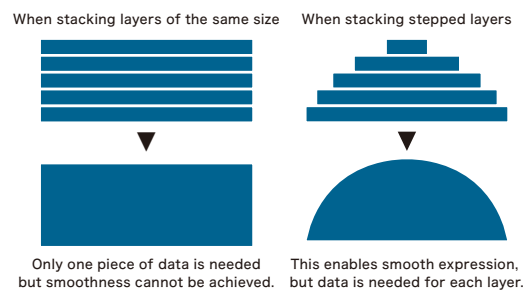
The JFX200-2513 EX maximizes the productivity and user-friendliness of the JFX200-2513, the industry's best-selling UV-LED curing flatbed inkjet printer, and enables high value-added printing.

## 1 Semi-stereoscopic 2.5D printing made easy! High value-added printing with "2.5D Texture Print" in "RasterLink7"!

### Stereoscopic appeal with 2.5D printing

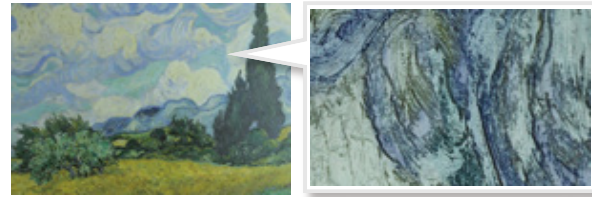
A newly developed function, "2.5D Texture Print" in Mimaki's original RIP, "RasterLink7" allows you to easily create multi-layered gradation data.

The "Emboss Print", one of Mimaki's printing solutions, "Surface Imaging" makes a surface look bumpy with multi-layered UV ink printing, which requires a manual preparation of step-wise data for each layer to create smoother expression. However, "JFX200-2513EX" allows you to easily create 2.5D print data of different layer with steps, simply by using "RasterLink7" (Standard accessory) and Illustrator/Photoshop.



You can create data using Photoshop/Illustrator and **Raster Link 7**

Simple creation of smooth-stereoscopic 2.5D prints is available with the JFX200-2513 EX to easily show the bumpy surface like woodgrain of interior material, elevated ink of oil-paintings and letters for an impressive look for signage. Not only coloring but also adding smooth print texture can deliver added value.



Expression of elevated surface with layered ink

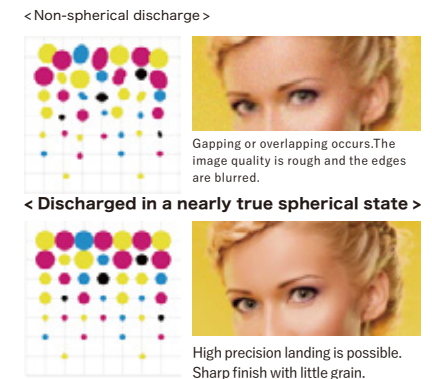


## 3 Suitable for large format sign graphics, interior/decoration and fine arts, seeking quality

Three image control technologies to realize high quality

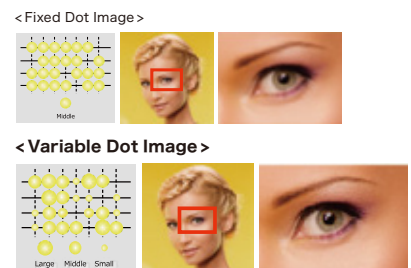
### 1. Waveform control

By discharging spherical ink droplets directly, depositing of droplets and overlapping between dots is reduced, achieving a sharp print quality with low grain.



### 2. Variable dots

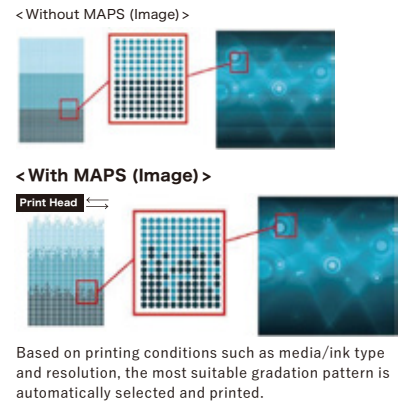
Three different ink dot sizes are used in printing to enable high-quality prints with reduced graininess.



Dots are combined including the minimum size of 5pl to enable grainless, smooth color printing.

### 3. MAPS (Mimaki Advanced Pass System)

Banding (horizontal stripes), uneven color, or glossy streak can be reduced to produce smooth prints by printing pass boundaries fading in gradation.

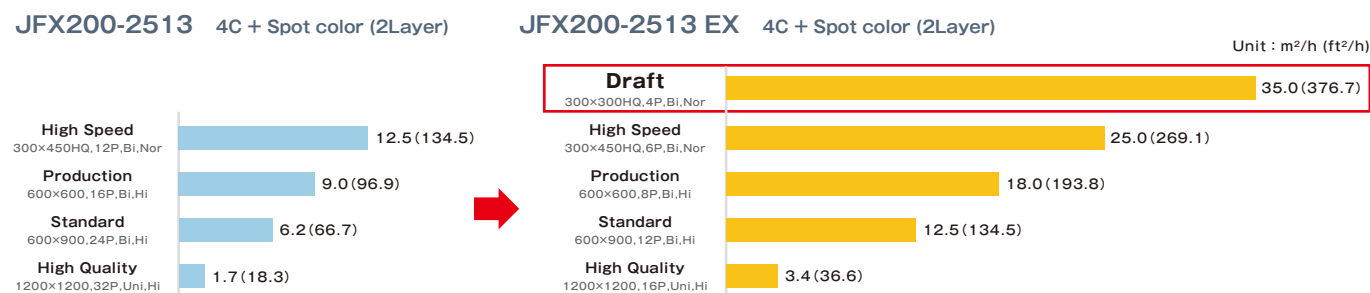


## 2 Higher-grade productivity and doubled White + Color simultaneous print speed! The printer allows you to respond to demand for short-term delivery.

JFX200-2513 EX prints two times as fast as JFX200-2513 in White + Color simultaneous printing. The newly added Draft mode (300x300HQ 4P Bi Normal) can deliver print speeds up to 35m<sup>2</sup>/h (376.7 ft<sup>2</sup>/h) in 4-color + White simultaneous printing.

### 4-color + White simultaneous printing speed comparison

The print speed will be doubled while printing at the same resolution. Applying the spot color set will alleviate the concern of the disadvantages of low speed.



\*Time taken for setting materials and the printer's operating time before or after printing are not considered.

### You can choose the most suitable ink depending on your material and application.

#### [6C+CI+W]



The color set with Light colors and Clear enables to print high-quality images without graininess.

Supported ink types: LH-100, LUS-150

#### [4C+CI+Pr+W]



By adding primer ink, the adhesion of inks and materials is improved.

Supported ink types: LH-100, LUS-120, LUS-150

#### [4C+CI+W]



By adding clear ink, gloss finish can be applied on the print surface, and by printing multiple layers of ink, multi-layered finish for stereoscopic effects can be applied.

Supported ink types: LH-100, LUS-120, LUS-150, LUS-211, LUS-350

#### [4C+4W]



As all the nozzles of one head are allocated to the White color, MAPS for White is effective from draft mode, which can create more beautiful white printing.

Supported ink types: LH-100, LUS-120, LUS-150

Please use OPT-J0499(4C+4W) ink applying kit for [4C+4W] printing.

## 4 Usability achieved based on Mimaki's long time experience UV flatbed printers

As a pioneer of UV flatbed printers, Mimaki knows everything about ease of use from its long experience. We provide the design that is simple to use and reduces workload, plus a preventive safety function to avoid trouble during printing.

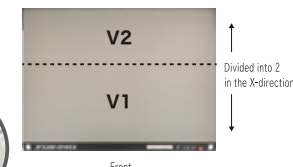
### Table size (1,300x2,500mm)

Printing is possible for 4'x8' (1,220mmx2,440mm) panel boards that are commonly used in the marketplace. This table size is ideal for both easy installation and excellent user-friendliness.



### Foot switch for vacuum control

Two separate partitions in the X-direction of the vacuum area can be adjusted depending on the media size you use, and newly added foot switch can be used to turn ON/OFF in addition to the control panel.



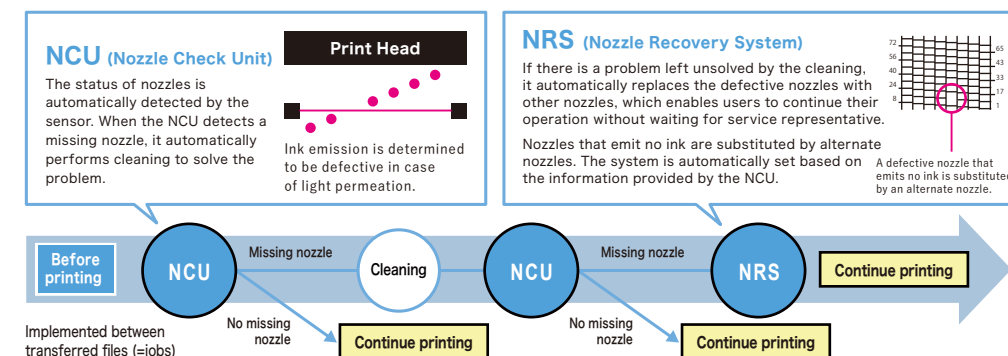
### With Ethernet support

In addition to the conventional USB connection, Ethernet connection is now available. Setup is easy; just add cables to the existing office network environment.



### Auto maintenance function to shorten downtime

The NCU is newly mounted!



### Links with external stop interface allow users to meet safety standards that are different by factory

Other than the standard emergency stop switch, customers can also have the printer work with safety measures that suit their environment. The product can support various safety standards depending on the customer, including safety light curtain and safety mat.



### More environment-friendly business model

Mimaki UV inks (LH-100, LUS-120, LUS-211 and LUS-150) obtain certification for GREENGUARD GOLD. The "GREENGUARD Gold certification" ensures that products are acceptable for use even in environments such as schools and medical facilities based on the most strict global standard of chemical substance diffusion. The GREENGUARD Gold-certified inks consider environmental impacts given after printing.

