

Inkjet plotter GP-604S

Request for daily care

Inkjet plotter is the precision machine that has highly delicate mechanism. Especially, little dust and paper powder may have effect on a head nozzle, and may not perform normal printing.

To use the inkjet plotter in good condition, we recommend the following daily care.

NOTICE



- Be sure to not water into the inside of this plotter. If the inside gets wet, it causes an electric shock, fire, and damages.



- GP-604S is the plotter using the organic solvent ink. Wear supplied goggles and gloves during daily care.



- In case water or alcohol mixed into the organic solvent ink, flocculation occurs. Be sure to not adhere water or alcohol on the nozzle, near the head, the cap, and wiper.



- Do not use benzine, thinner, and the chemicals contained abrasives. The surface of the cover may be deteriorated or deformed.



- Do not apply lube oil on the inside of this plotter. The plotter mechanism may be damaged.



- Do not disassemble this plotter. It causes an electric shock, fire, and damages.

NOTE!

- When not using this plotter for a long time, it is necessary to flash little ink periodically to obtain the ink flashing stability.

When not using for a long time, turn off the front power switch only. The main power switch at rear should be on (The "on" mark described as a vertical line " | " on the switch) and also keep the socket inserted.

1. Installation environment

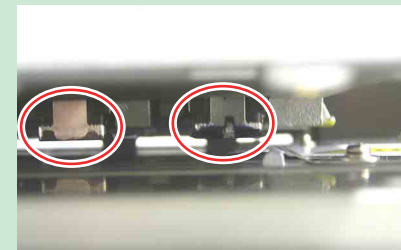
- Use this plotter in clean (less dust) environment. The use of fan and ventilator might be a cause of dust brow up.
- To use the organic solvent ink, install this plotter in a well-ventilated area.
- This plotter should be used at 20 to 35°C and 35 to 65%Rh. Avoid using at lower or higher than this temperature and humidity.

2. Daily care

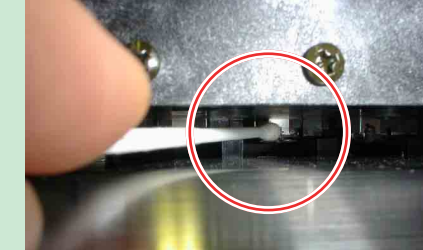
Around heads

Dust accumulates most around heads mostly, and it effects the operation and printing results for this plotter, and also as this plotter has very delicate mechanism, need enough attention to the care for it. Gelled ink and dust adhere to the bottom of a slider and around heads, scour off it using a swab. Do not touch the head nozzle.

Around heads contaminated



Clean with a swab



Capping station (☞ Operation manual Chapter3 "Cleaning the wiper and ink caps")

Around the cap is also the place dust accumulates. Clean to prevent dust adhering to the heads.

- When using SS2 ink : Cleaning fluid RS (SPC-0336)

Ink cap



Guide of wipe



Inside of the wiper cover



Wiper (☞ Operation manual Chapter3 "Cleaning the wiper and ink caps")

Ink and paper powder accumulate on the wiper. Confirm the condition, and clean it if it's dirty. In case it deformed, replace to the new one. (☞ Operation manual Chapter5 "When the message [REPLACE WIPER] is displayed)

Dirty wiper



Deformed wiper



Y main shaft

When Y main shaft is dirty or slider does not move smoothly, apply Y main shaft oil (SPC-0364).

Before apply the oil, wipe out the dust on the Y main shaft with a soft cloth. We recommended cleaning and applying oil once a month.



Outer case (☞ Operation manual Chapter3 “Maintenance for frame components”)

According to the working environment, the dust and cloud of dust may be adhered.

Wring a soft cloth firmly after wetting it with water and wipe out the dust to prevent the head moving part from dust.

Waste ink tank (☞ Operation manual Chapter3 “When the waste ink tank become full”)

Check the waste ink tank level to prevent overflow.

3. Storage of media

Media should be stored in the little dust area, and not in direct sunlight. Avoid storing the media in the area with high temperature and high humidity.

4. Storage of ink cartridge

Store the ink cartridge in no direct sunlight, and no high humidity.

As it's a delicate product, do not drop it.

The board on an ink cartridge (right picture) should not be contaminated and discharged static electricity.



5. The examples of defective printing

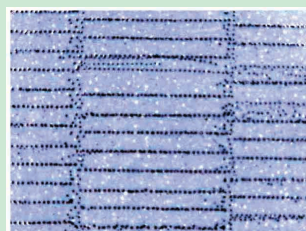
These following examples indicate improper head (nozzle) firing by dust, which effect printing.

Confirm the nozzle condition periodically before or during outputting not to use in such as this condition.

The nozzle condition can be confirmed with [TEST plotting] in this plotter.

(☞ Operation manual Chapter2 “Checking and solving nozzle clogging”)

Deflection



Nozzle out



Ink dripping



Satellite



6. How to recover improper nozzle flashing

When not using this plotter for a long time or according to environmental temperature, nozzle flashing may become unstable. In this case, follow the procedure below to recover nozzle.

1) Daily care

Execute daily care all parts noted on this manual.

2) Normal cleaning (☞ Operation manual Chapter2 “Checking and solving nozzle clogging”)

Execute normal cleaning along the operation manual after executed daily care.

Repeat cleaning and test printing, then confirm the nozzle clogging resolved.

3) Hard cleaning (☞ Operation manual Chapter2 “Checking and solving nozzle clogging”)

If nozzle clogging cannot be solved even executed normal cleaning several times, change the cleaning mode to hard cleaning, and execute the same procedures.

4) Nozzle cleaning (☞ Operation manual Chapter3 “Cleaning the nozzle [NOZZLE WASH]”)

In case nozzle clogging or other problems can not be cleared away after all these procedures, execute nozzle cleaning.

The execute cleaning and test printing for one minute

5) Nozzle cleaning (☞ Operation manual Chapter3 “Cleaning the nozzle [NOZZLE WASH]”)

In case nozzle clogging is not solved with nozzle cleaning above-mentioned, set the TIME to leave 5 minutes, and execute nozzle cleaning and test printing again.

In case nozzle clogging is not resolved with all these procedures, contact with our customer service or make service call to the agency you purchased.

7. Supplies

- Cleaning wiper kit (SPA-0116)
- Cleaning fluid RS (SPC-0336)
- Y main shaft oil (SPC-0364)