

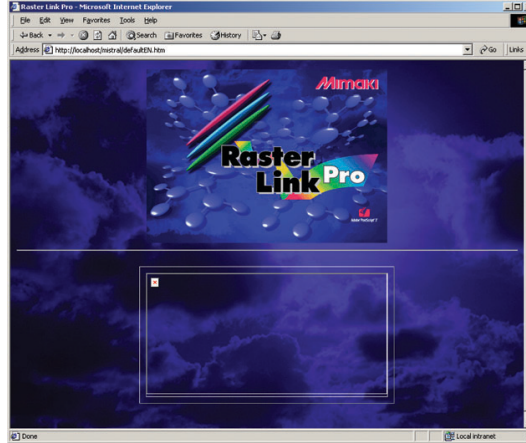
Precautions in Use of Raster Link Pro on Windows2000 or WindowsXP

Raster Link Pro displays the program created in JAVA by using Internet Explorer.

Software named “Microsoft VM” is necessary to display a JAVA program on Internet Explorer.

A PC on which Microsoft VM has not been installed cannot display the screen of Raster Link Pro properly.

Example of Screen Which is Not Displayed Properly



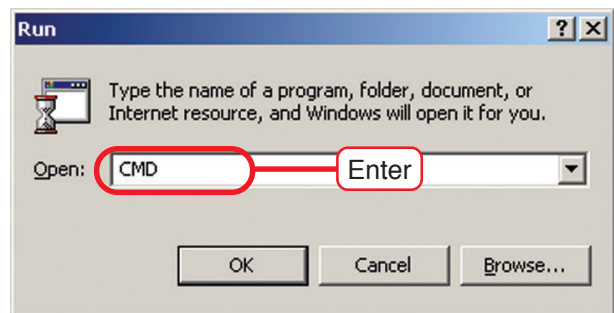
Windows may not contain Microsoft VM depending on the version of Windows. In addition, Microsoft VM that was contained in Windows may be deleted when Windows Update is executed.

Perform checking by following the “Checking Procedure for Presence of Microsoft VM”, and if Microsoft VM is not contained, install it according to the procedure described on page 2.

Checking Procedure for Presence of Microsoft VM

Presence of Microsoft VM can be checked for by the following procedure.

- 1) Select [Run...] from the [Start] menu.
- 2) Input “CMD” in the column of “Open”, and click .

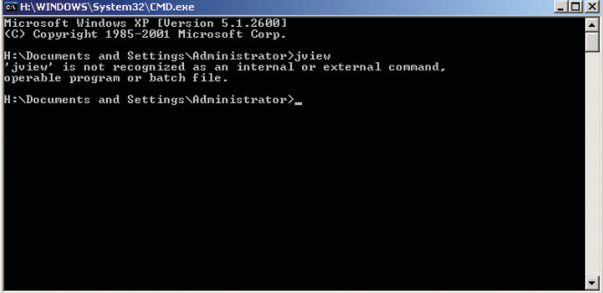


- 3) The Command Prompt window is displayed.
- 4) Input “jview”, and press the key.

If Microsoft VM has not been installed

The following error message is displayed.

'jview' is not recognized as an internal or external command, operable program or batch file.



```
H:\WINDOWS\system32\CMD.exe
Microsoft Windows XP [Version 5.1.2600]
(C) Copyright 1985-2001 Microsoft Corp.

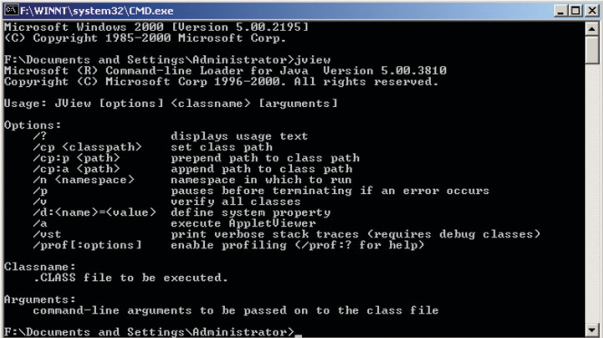
H:\Documents and Settings\Administrator>jview
'jview' is not recognized as an internal or external command,
operable program or batch file.

H:\Documents and Settings\Administrator>
```

When Microsoft VM has been installed

A message is displayed over several lines. The version of Microsoft VM is displayed in the beginning of the message as follows.

Microsoft (R) Command-line Loader for Java Version 5.00.3810.



```
F:\WINNT\system32\CMD.exe
Microsoft Windows 2000 [Version 5.00.2195]
(C) Copyright 1985-2000 Microsoft Corp.

F:\Documents and Settings\Administrator>jview
Microsoft (R) Command-Line Loader for Java, Version 5.00.3810
Copyright (C) Microsoft Corp. 1996-2000. All rights reserved.

Usage: JView [options] <classname> [arguments]

Options:
/?          displays usage text
/cp <classpath>  set class path
/cpp <path>     prepend path to class path
/cpa <path>     append path to class path
/n <namespace> namespace in which to run
/p         pauses before terminating if an error occurs
/v         verify all classes
/d:<name>-<value> define system property
/a         execute AppletViewer
/vst       print verbose stack traces (requires debug classes)
/prof[:options] enable profiling (/prof?: for help)

Classname:
.CLASS file to be executed.

Arguments:
command-line arguments to be passed on to the class file

F:\Documents and Settings\Administrator>
```

Installation of Microsoft VM

Microsoft VM is found on the CD-ROM of the following version of Raster Link Pro.

- Raster Link Pro Ver. 3.1 or later
- Raster Link Pro Flat Ver. 4.5 or later

Install Microsoft VM by the following procedure.

- 1) Double-click the Microsoft VM Installer that is found on the CD-ROM.

D:\jvm\msjavx86.exe
(If the CD-ROM drive is the D drive)

- 2) Install Microsoft VM according to the message.
- 3) Upon completion of installation, restart the PC.



- The attached "msjavx86.exe" is not the latest version (Ver. 5.00.3810) of the installer. The version installed here is Ver. 5.00.3805.

Windows Update

Microsoft VM which is installed from the CD-ROM of Raster Link Pro is not the latest version because of a distribution restriction of Microsoft Corporation. There is no problem as long as you use only Raster Link Pro on Internet Explorer. However, security problems occur if you browse Web pages on Internet. Therefore, Windows Update is recommended after installation of Microsoft VM.

When Raster Link Pro is to be installed on Windows2000 SP4

Microsoft VM has not been installed on a PC on which SP4 or a later version of Windows2000 has been preinstalled. When Raster Link Pro is to be installed on such a PC, installation of Microsoft VM is necessary.

Microsoft VM has already been installed on a PC on which SP3 or an earlier version of Windows2000 has been preinstalled. On such a PC, Microsoft VM is not deleted even when you update Windows2000 to SP4 by Windows Update or the like.

On a client PC operating on Windows2000 SP4 or WindowsXP SP1a

When Raster Link Pro is to be displayed on a Windows client PC which is connected to the network, it is not displayed properly unless Microsoft VM has been installed also on the client PC.

Microsoft VM must be installed if the Windows version of the client PC is one of the following versions.

- SP4 or a later version of Windows2000 which has been preinstalled on the PC
- WindowsXP without SP
- WindowsXP SP1a or later



- WindowsXP SP1 contains Microsoft VM. However, Microsoft VM is deleted if it is updated to SP1a by Windows Update or the like.
In such a case, install Microsoft VM on the client PC from the Raster Link Pro CD-ROM by the same procedure as described on page 2.

