

Adobe® PostScript®3™ Software RIP
Raster Link Pro

The logo for Raster Link Pro features the words "Raster Link Pro" in a large, bold, black font with a white outline. The text is set against a vibrant, multi-colored background that transitions from yellow and green on the left to blue and purple on the right, resembling a stylized rainbow or a graphic element.

Reference Guide

GP-1810 / GP-1810D

DM2-1810

DM3-1810S

This guide explains the functions of Raster Link Pro for the color ink jet plotter

“GP-1810/1810D/DM2-1810/DM3-1810S.”



Adobe® PostScript® 3™

MIMAKI ENGINEERING CO., LTD.

TKB Gotenyama Building, Kitashinagawa, Shinagawa-ku, Tokyo 141-0001, Japan

Phone: +81-3-5420-8671 Fax: +81-3-5420-8687

URL: <http://www.mimaki.co.jp/>

E-mail: trading@mimaki.co.jp

Version 1.00

D201288

The kinds of manuals and how to use them

This product comes with following manuals.

Installation Guide

This manual explains about the following.

- How to set up PC (Windows 2000, XP) in order to install Raster Link Pro.
- How to install a printer driver into a client PC and how to set up.

Reference Guide

There are two kinds of reference guides.

One is for common settings to each printer and the other is for special settings to each printer (this manual).

They explain necessary setting items of the functions and operation in order to use Raster Link Pro.

Read the proper reference guide for your printer.

you are now
reading this
manual.

Adobe, the Adobe logo, Photoshop, Illustrator and PostScript are trademarks of Adobe System Incorporated.
Apple, Macintosh, Power Macintosh, Mac OS and Mac OS X are registered trademarks of Apple Computer, Inc.
Microsoft Windows, , Windows 2000, Windows XP are trademarks of Microsoft Corporation and other countries.

All brand names and product names are trademarks or registered trademarks of their respective companies

Attention

- * Do not mention or copy all or part of this instruction without permission.
- * Information of this instruction is subject to change without notice.
- * Please consent a few changes to the specification because of the improvement of the software.
- * Except for what determined on the security code of MIMAKI ENGINEERING CO., LTD. Under no circumstances we will be liable to you for any damages (including and without limitation, to passive damages, consequential loss, special damages or other monetary damages) arising out of the use or inability to use this product, even if MIMAKI ENGINEERING has noticed the possibility of damages. For example, we are not liable to you for damages of media arising out of the use of this product and consequential loss caused by the media.

About this manual

This instruction describes how to operate Raster Link Pro for “GP-1810/GP-1810D/DM2-1810/DM3-1810S”.

Notations

Menu items are enclosed in quotation marks like “Waiting Print Edit”.

Buttons in dialog box are framed like .

Symbol



Indicates a caution you must observe when operating the product.



Describes a useful procedure.



Shows the number of the page that has related contents.

Table of Contents

The kinds of manuals and how to use them	2
Attention	3
About this manual	4
“Job Setting” window	6
Setting Items of each Menu	6
Common buttons	7
[Print Area] menu	9
Print area view	10
[Print Area] sub menu	12
Setting a Valid print area	13
[Origin] sub menu	14
Move Origin using a keyboard	15

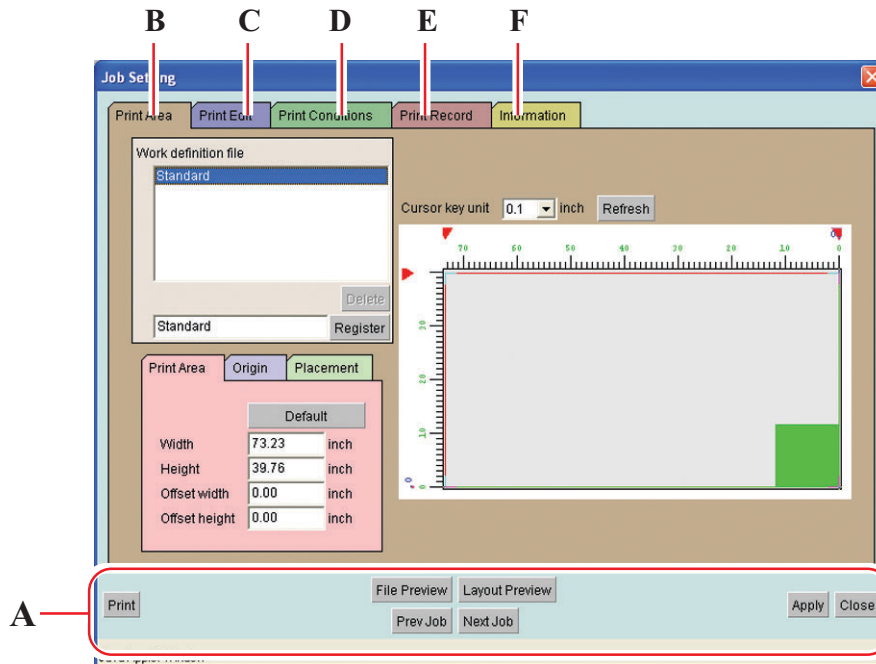
[Placement] sub menu	16
Registering a Print Area Definition File	18
Selecting a Work Definition File	19
Deleting a Work Definition File	19
[Print Edit] menu	20
[Placement] sub menu	20
Moving an Image on the Keyboard	22
[Option] sub menu	23
Precautions when you make nesting copy	24
[Print Conditions] menu	25
[Print Mode] sub menu	26
[Adjustment Set] sub menu	28
[Color Matching] sub menu	30
[Device Adjustment] sub menu	32
Color Adjustment	34
“Color Adjustment” window	34
Registering a color parameter file making a print adjustment set	36
Print by using adjustment set	38
Adjust color during printing	40
Adjust color in detail (Ink Curve Adjustment)	43
Adjust an ink curve	47
Set an ink curve by keyboard	50
[Print Record] menu	52
[Information] menu	54
“Job Information” window	55
[Results] menu	55
[Device Adjustment] menu	57
Reprint the printed data	58
Device function	60
Device window	60
Setting default of the print conditions	61






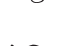
“Job Setting” window

The setting items of Raster Link Pro are located in several menus.

The following description explains each menu and how to use the functions.

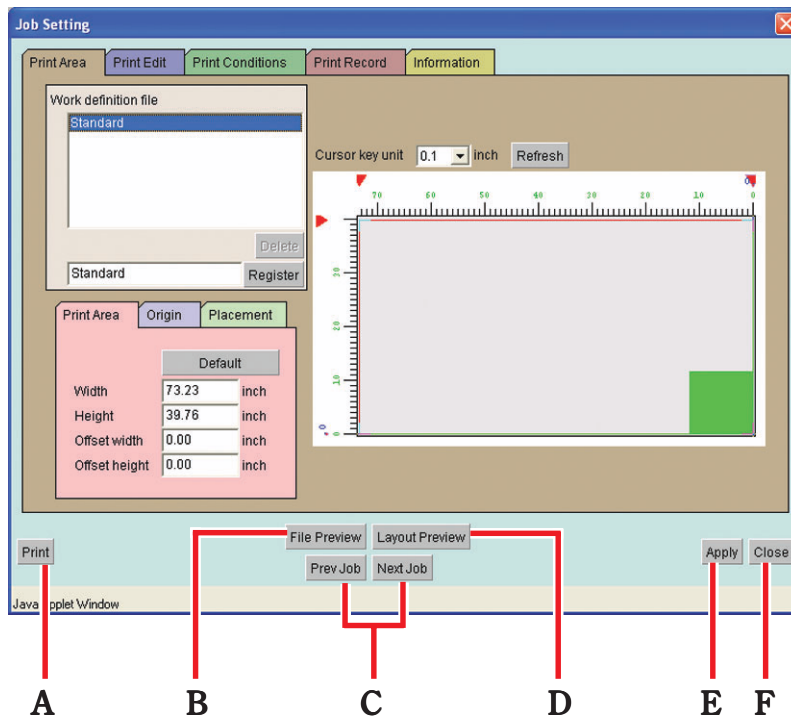
Setting Items of each Menu



- A. Common buttons  P. 7
- B. [Print Area]  P. 9
- C. [Print Edit]  P. 20
- D. [Print Conditions]  P. 25
- E. [Print Record]  P. 52
- F. [Information]  P. 54

Common buttons

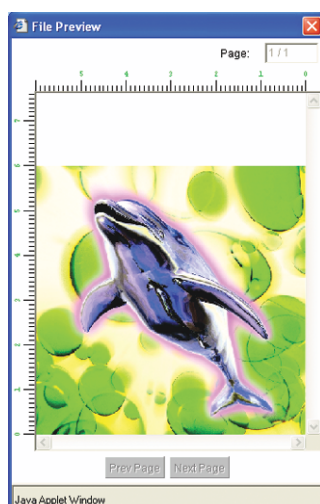
These buttons are used in common to all the menus.



A. **Print** button

Save the parameters that are set on Job Setting window and then start printing.

B. **File Preview** button



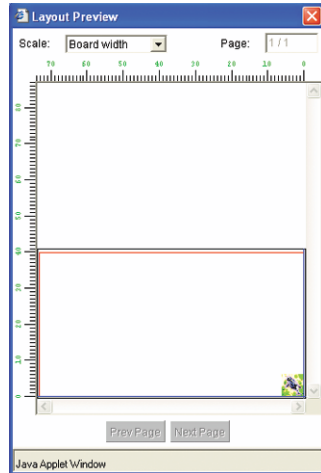
Open the “File Preview” window. This window displays the preview image of print file itself.

When there are two or more pages, highlight “present page / total page count” on the upper right of the window. In this case, you can change the page by clicking **Prev Page** button or **Next Page** button.

D. Prev Job , Next Job button

Select a print file on the “Waiting for Print Edit” job list and display the “Job Setting” window of the selected file.

E. Layout Preview button



Displays Layout Preview window.

The actual printing image is displayed reflecting the values set on the “Job Setting” window.

When the set value is changed on the “Job Setting” window, press the Layout Preview button to confirm the preview.

The display magnification can be set based on the board width or Print area.

When there are two or more pages, highlight “present page / total page count” on the upper right of the window. In this case, you can change the page by clicking Prev Page button or Next Page button.

E. Apply button

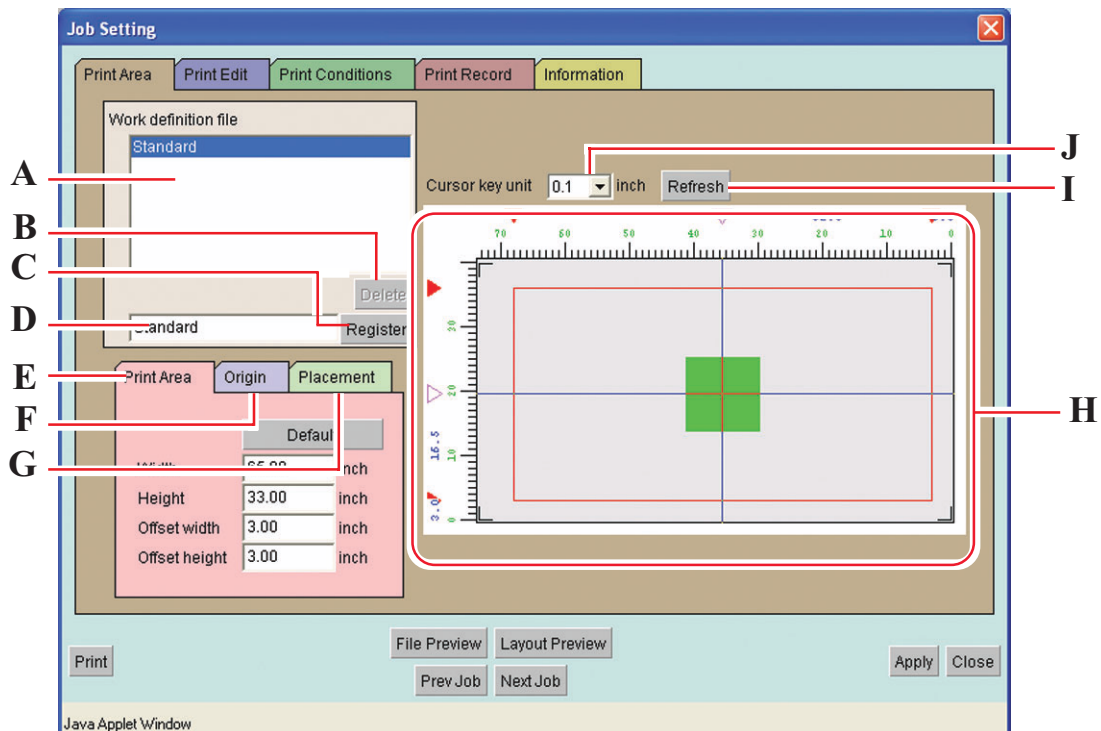
Save the value set on “Job Setting” window.

F. Close button

Close “Job Setting” window.

[Print Area] menu

The settings relating to the valid drawing area will be made.



A. Work definition file

Display registered Work definition files.

Work definition file is a registered file which value is set in the sub menus such as [Print Area], [Origin], and [Placement] and registered with a name.

You need to select one of the Work definition files when printing.

(☞ P. 18)

B. Delete button


Delete Work definition files.

C. Register button

Add a new Work definition file or overwrite a registered Work definition file with new setting conditions.

D. Entry box for Work definition file name

Display the currently selected Work definition file. To add a new file, enter the name of the file.


CAUTION

- The following characters cannot be entered.

“ / \ : ; ! , * ? < > . & ”

E. [Print Area] sub menu

Set printing area. (👉 P. 13)

F. [Origin] sub menu

Sets the Origin on the Print Area. (👉 P. 14)

G. [Placement] sub menu

Sets the placement of images in relation to the Origin. (👉 P. 16)

H. Print area view

Displays the settings made on the “ Print Area” menu. (👉 P. 10)

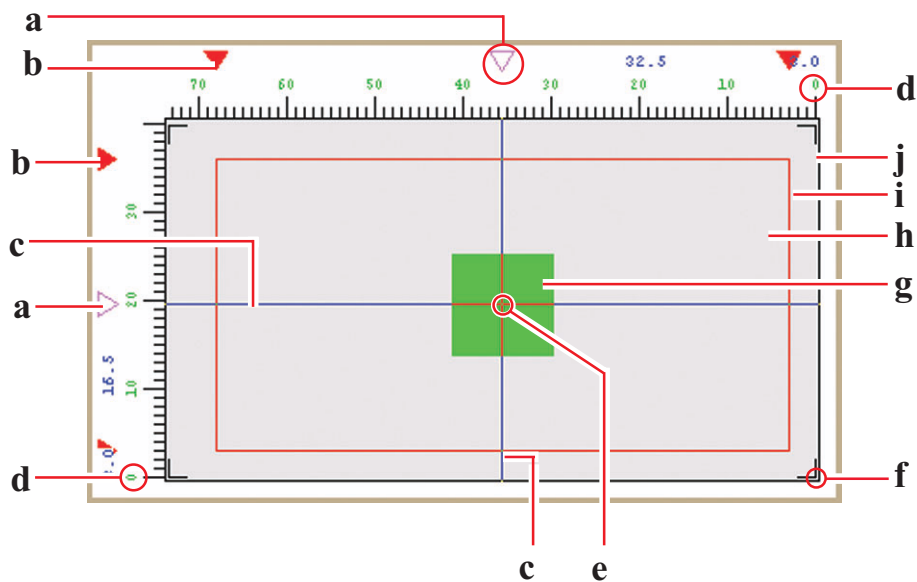
I. Refresh button

Re-displays the line of the drawing area, etc. disappeared while the settings were made.

J. Cursor key unit





Selects the unit for moving the position of the Origin by pressing the arrow key on the key-board. (👉 P. 15)

Print area view



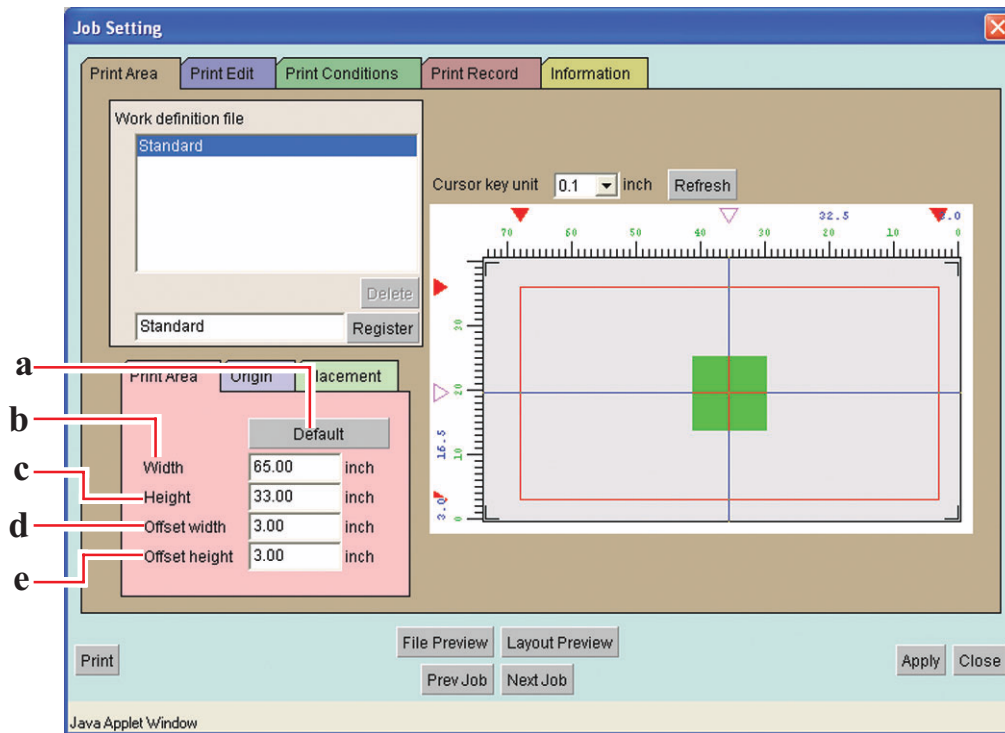
a. Origin Guide

Drag this mark to move the Origin Guide line (blue line).

- b. Edge of Valid printing area**
Four  marks show the border of the Valid printing area.
- c. Origin Guide line**
Intersection of vertical blue line and horizontal blue line is the Origin.
- d. The Top of the largest Print area**
The Top of the largest print area of printer is shown as 0.
- e. Origin**
For placing an image, Origin is designated as an intersection of the two blue lines. ( P. 14)
- f. Initial Origin**
Initial origin displayed when the power of printer is turned on.
- g. Where to place an image**
Show where to place an image but does not show the real size of the image.
In addition, this does not show the location of the image precisely.
The size of the image can be confirmed on the placement view of [Print Edit] menu. ( P. 20)
- h. Valid Print area**
Show the Valid printing area that is set in [Valid printing area] sub menu.
( P. 13)
You can move the print area to any position on the table of printerC by dragging the red rectangle with the mouse.
- i. The largest Print area**
The area surrounded by ((marks at 4 corners is the maximum drawing area of DM2-1810.
- j. Table of DM2-1810**
Displays DM2-1810 table.

[Print Area] sub menu

Set Print Area on the table of printer.



a. **Default** button :

Set the maximum Valid printing area, and set the origin at the Initial Origin of printer.

b. **Width** :

Input the width of the Valid printing area.

c. **Height** :

Input the height of the Valid printing area.

d. **Offset width** :

Input the distance from the printer origin of DM2-1810 in the scan direction.

e. **Offset height** :

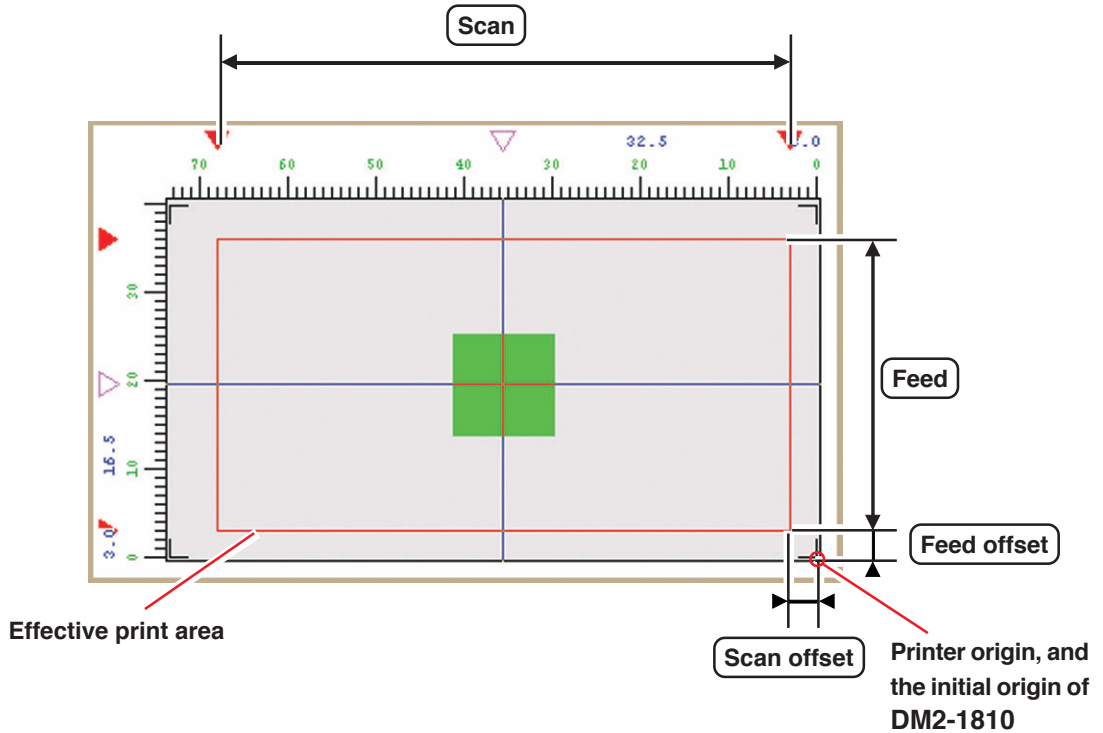
Input the distance from the printer origin of DM2-1810 in the feed direction.

Setting a Valid print area

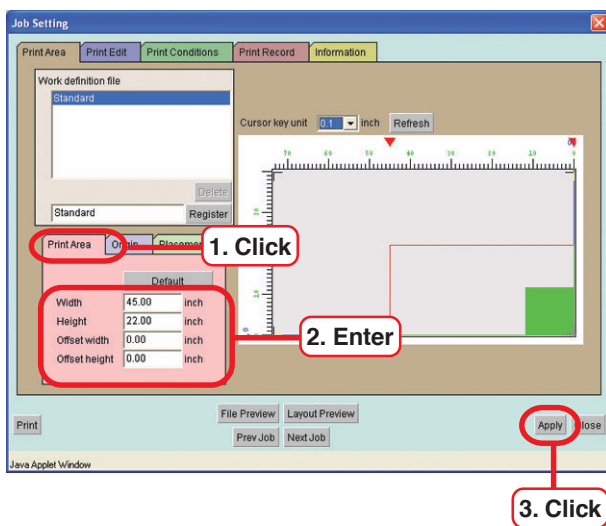
A print area is indicated by a red square.

The image projecting from the print area is not printed.

However, in the case of copy for which nesting is set, the image protruded to the feed direction of the drawing area is printed.



1



Click [Print Area] Sub menu.

Input the dimensions and location of your desired Print area.



- In order to change the size of printing area (indicated with red rectangle), enter the value in Width and Height or drag the corner of the red rectangle with the mouse.
- In order to move Print area, enter the value in Offset width and Offset height or drag inside the red rectangle with the mouse.

Click **Default** button, Set the Print area to maximum print area.
Set the origin to the default origin of the printer.

Click **Apply** button.

[Origin] sub menu

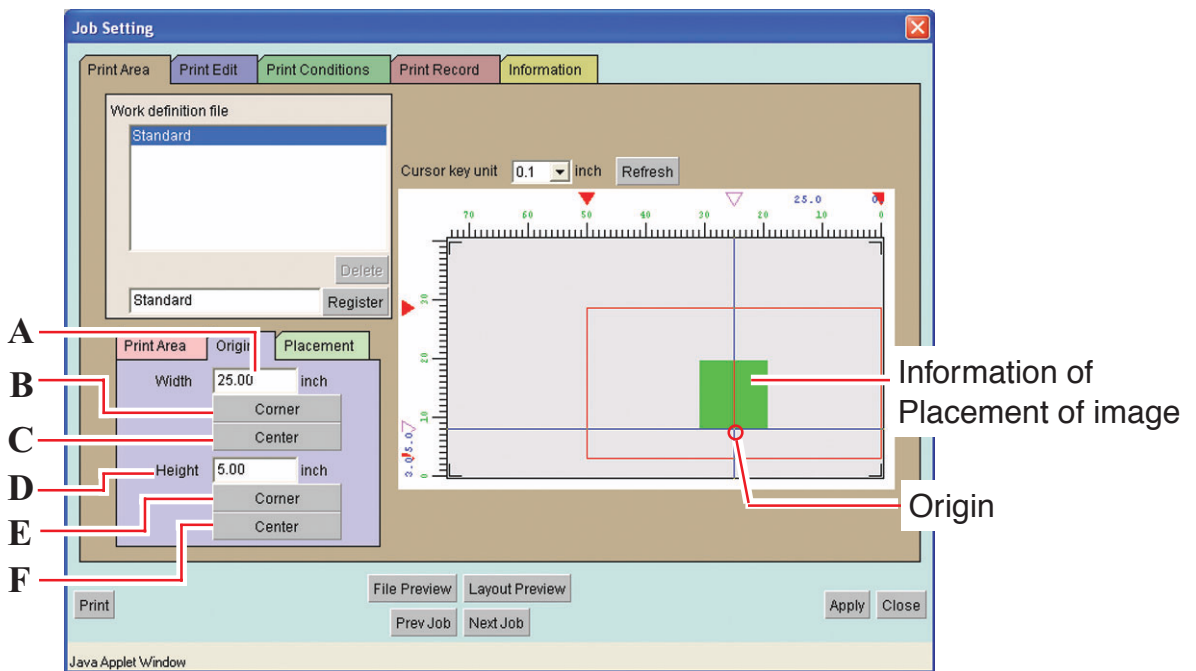
Set the origin that works as a reference for locating the image.

The fine adjustment of the printing position is set on the [Placement] sub-menu of [Print Edit] menu. (☞ P. 20)

Accordingly, it is not necessary to set the Origin here on the precise printing position.

The intersection of the two blue lines is Origin.

When setting the position of Origin, the distance in the width direction and in the feed direction decides the offset from the lower right corner of Print area.



A. Width :

You may enter the offset amount in the width direction from the lower right corner of Print area.

B. Width : **Corner** button

Places the Origin at the right end of width direction of Print area.

C. Width : **Center** button

Places the Origin in the center of width direction of Print area.

D. Height :

You may enter the offset amount in the feed direction from the lower right corner of Print area.

E. Height : **Corner** button

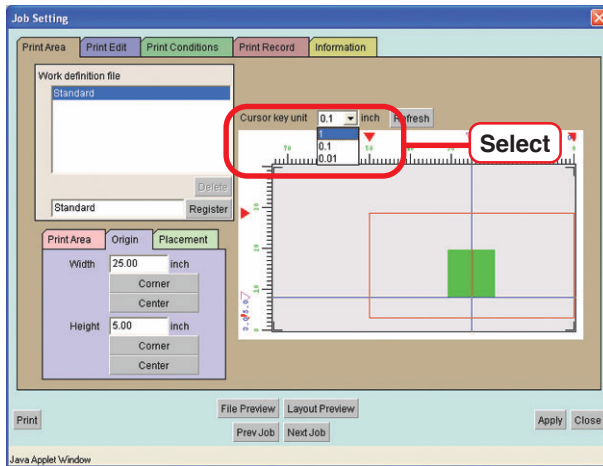
Places the Origin at the top of Print area.

F. Height : **Center** button

Places the Origin at the center of height direction of Print area.

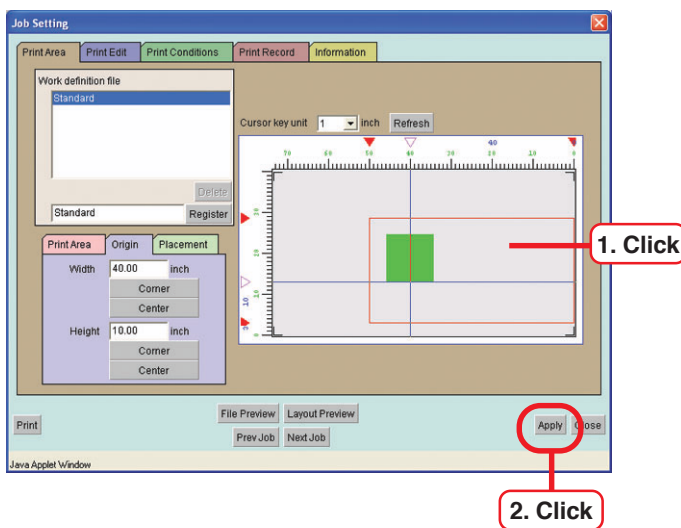
Move Origin using a keyboard

1



At “Cursor key unit,” select the distance of one step of the cursor which will take place when an arrow key on the keyboard is pressed.

2



Click the Print area with the mouse to make the print area view active.

The frame of the print area view turns blue.

The print area view can be made active also by pressing the Tab key on the keyboard several times.

Press an arrow key on the keyboard to move the origin.

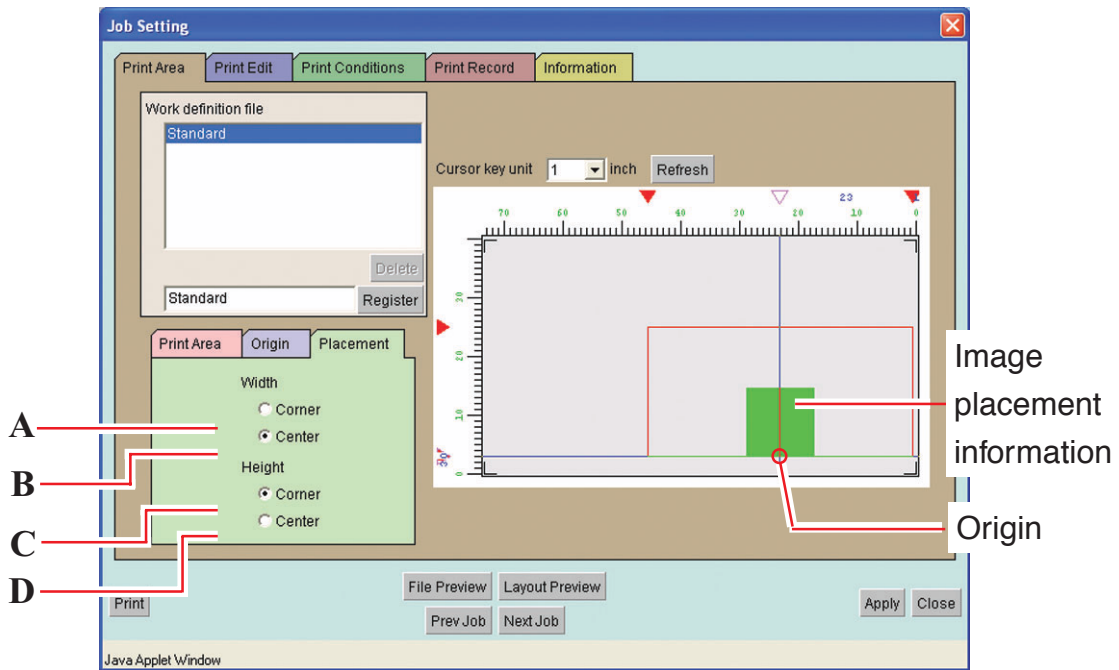
Click **Apply** button.

[Placement] sub menu

Places the Origin at the center of height direction of Print area.



- Set the location of the image properly in combination with the [Origin] setting. If the combination is not appropriate, the image may project from the printing area. The image projecting from the printing area is not printed.



A. Width : Corner

Aligns the right end of the image with the Origin of the direction of width.

B. Width : Center

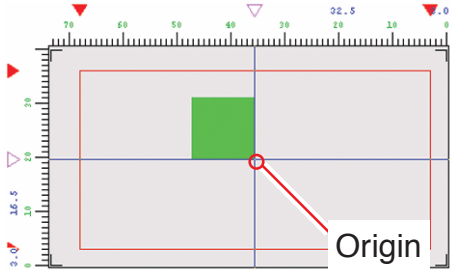
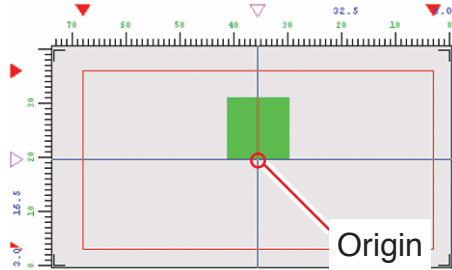
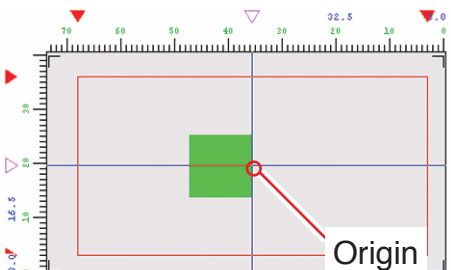
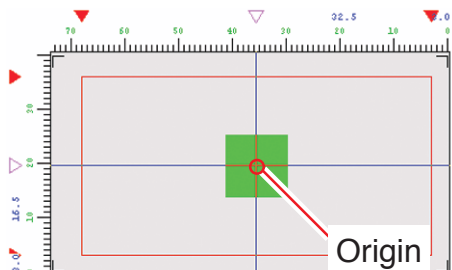
Aligns the center of the image in the direction of width with the Origin of the direction of width.

C. Height : Corner

Arranges the top of the image with the Origin of the direction of feed.

D. Height : Center

Arranges the center of the image in the feed direction with the Origin of the direction of feed.

Scan direction Feed direction	Arrange in the Corner	Arrange in the Center
Arrange in the Corner		
Arrange in the Center		

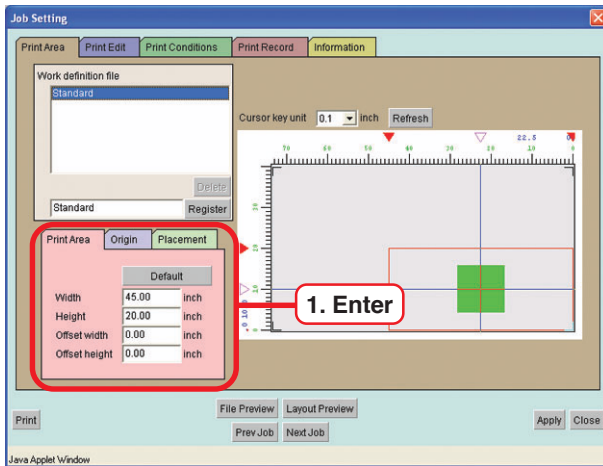
Registering a Print Area Definition File

Name the file of conditions that have been set on the [Valid Print Area], [Origin] and [Layout Mode] sub menus and register it as a Print Area definition file.

For printing, be sure to select the Print Area definition file.

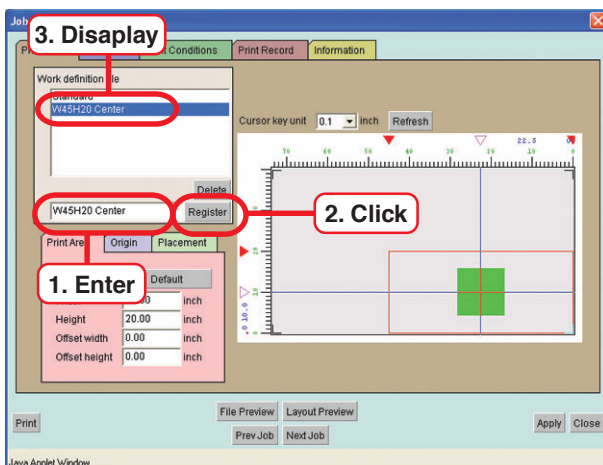
Print Area definition files are able to register additional.

1



Make setting for each item of [Valid Print Area], [Origin] and [Layout Mode].

2



Input a registration name.

Determine the registration name so that the Clipping Area, Origin and the Layout setting of the image can be identified.

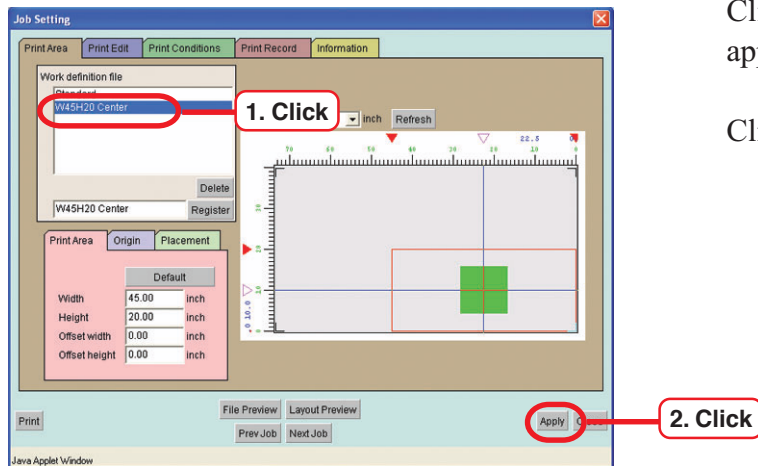
Click **Add** button.

A file with a new name is displayed in the Print Area definition file list.

Selecting a Work Definition File

You can call out a Work definition file registered.

1

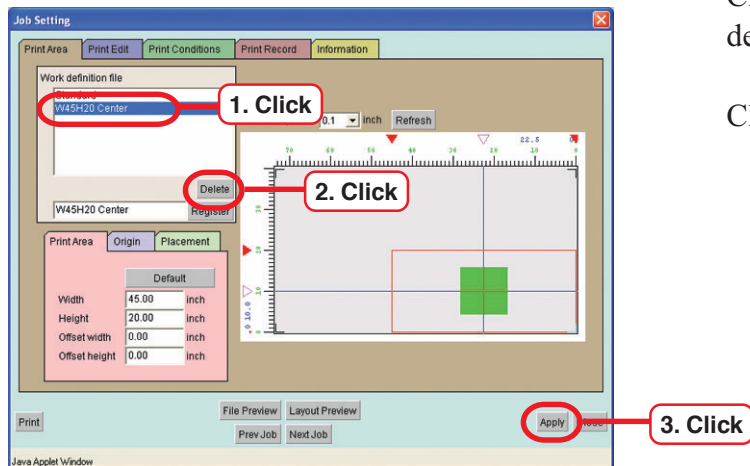


Click the Work definition file to be applied.

Click button.

Deleting a Work Definition File

You can delete a Work definition file registered.



Click the Work definition file to be deleted.

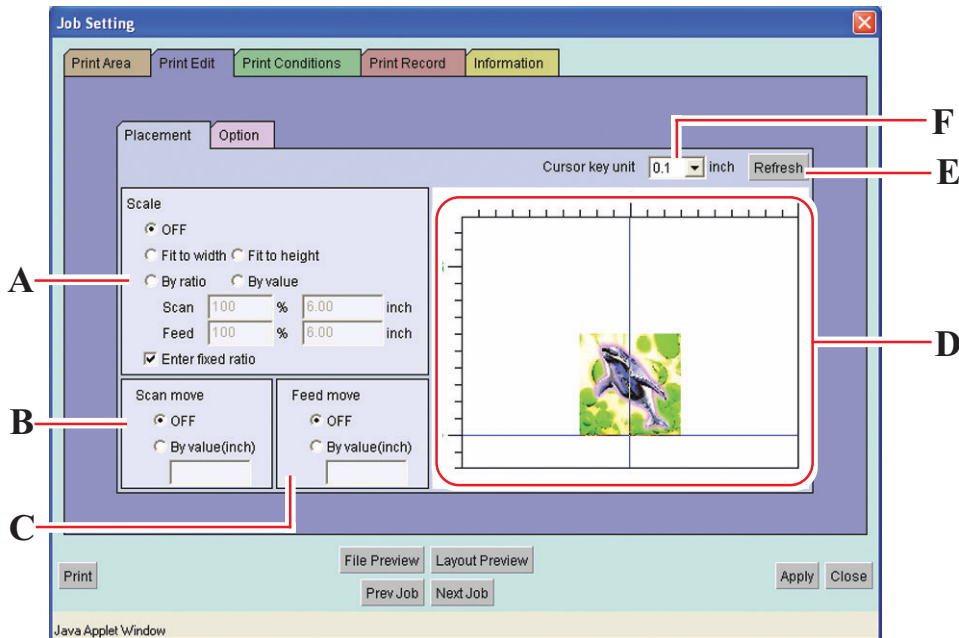
Click button.

[Print Edit] menu

[Placement] sub menu

This is a sub-menu to enlarge or reduce the image and to fine-tune the location of the image.

The image may be moved within the print area with the mouse or arrow keys of the key-board.



A. Scale

Enlarge or reduce the image

OFF : No scaling.

Fit to width : Scale the width of the image to adjust to the width of print area.

Fit to height : Scale the height of the image to adjust to the height of print area.

By ratio : Set the image size by ratio.

By value : Set the image size by value.

Scan, Feed (%) : Enter the ratio in scan (width) directions or feed (height) directions.

When “Enter Fixed Ratio” is enabled, the ratio can be specified by entering either of these value.

When setting the ratio to 100 percent, print with the size created in the application software.

Scan, Feed (unit) : Enter the image size.

Enter Fixed Ratio : Fix the aspect ratio of the image.

B. Scan move

Set the move values in the width direction of the image.

OFF : No movement.

Center : Move an image to the center of the effective drawing width of the media.

By value : Enter move value in the width direction.

C. Feed move

Set the move value in the height direction of the image.

OFF : No movement.

Center : Use this option to print in leaf media. Move the image to the center of the effective drawing height.

By value : Enter move value in the height direction.

D. Placement view

Displays inside of the PrintArea set on the [PrintArea] sub-menu of [PrintArea] Menu.

You may confirm the image placed in the PrintArea.

Gives preview of the conditions set on the [PrintEdit] menu.

However, even if nesting of copy is made active, the image displayed is just one.

You may confirm the nesting status on the Layout Preview Window.

If you click the [By Value] of “Scan move” and “Feed move”, you may move the image with mouse.


The position of the image may also be moved by pressing the arrow keys of the keyboard.

( P. 22)

E. Refresh button

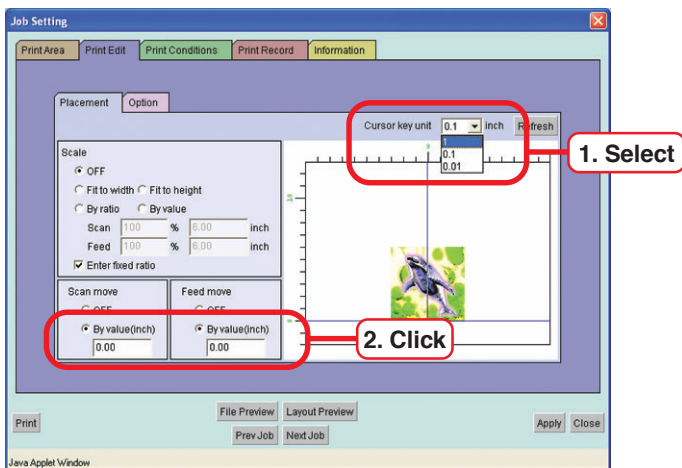
Displays again the placement view.

F. Cursor key unit

Set the transfer unit to fine adjust the dividing line using arrow keys of the keyboard. ( P. 22)

Moving an Image on the Keyboard

1

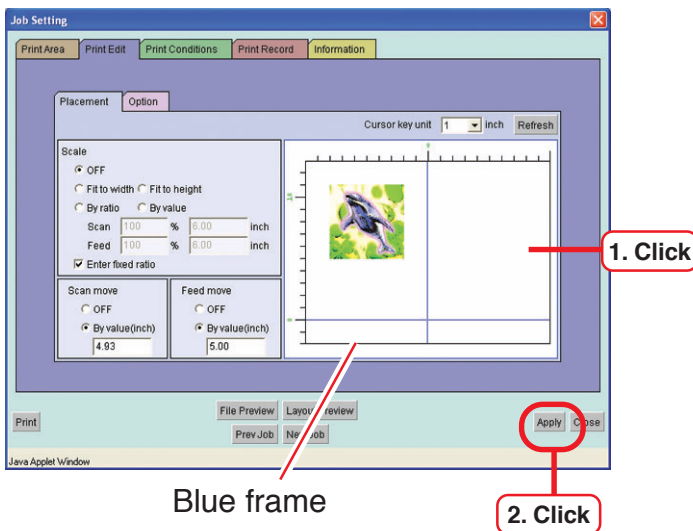


At “Cursor key unit,” select the distance of one step of the cursor which will take place when an arrow key on the keyboard is pressed.

When you wish to move the image in the direction of width, click “By value” of “Scan move”.

When you wish to move the image in the direction of feed, click “By value” of “Feeder move”.

2



Click the Valid print area with the mouse to make the print area view active.

The frame of the print area view turns blue.

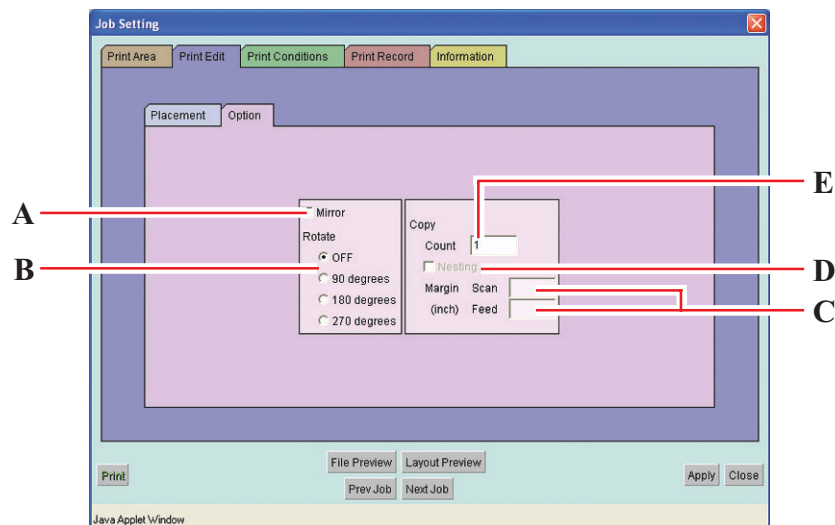
The print area view can be made active also by pressing the Tab key on the keyboard several times.

Press an arrow key on the keyboard to move the origin.

Click **Apply** button.

[Option] sub menu

Sub menu for setting of mirroring, rotation and the number of the copy.



A. Mirror

Print mirror images.

The mirror image can be checked on “Layout Preview” window.

B. Rotate

Set the rotating angle.

The rotation image can be checked on “Layout Preview” window.

C. Copy

Print the same image two or more times. Ordinarily, data is copied in feed direction. When Nesting is enabled, the image is copied also in scan direction.

When values of margin are set; margins are inserted between images.

D. Nesting

Nesting is set when the number of copy is entered.

Nesting is enabled when the images are placed in the width direction of Print area.

Disable the nesting when the image is printed in more than one work.

E. Copy

Exchange the copy for which nesting is disabled in the number of work to be copied.

The copy for which nesting is enabled is printed in the designated number in one work. If there are data in the outside of the printing area, such data are printed protruded from the printing area.

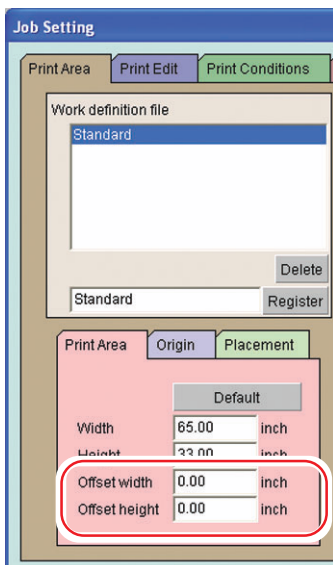
Precautions when you make nesting copy

When you enable the nesting while you are copying, make sure to make the setting of the following items.

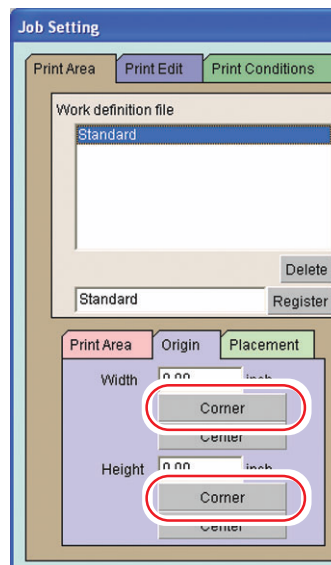
If the setting is mistaken, the printing cannot be performed properly. Even in the Layout Preview Window, the actual printed layout is not displayed properly.



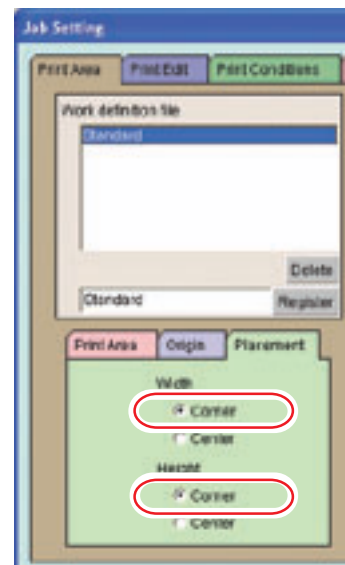
In the case of nesting printing, the image protruded from the printing area in the feed direction is printed. Accordingly, it is recommended to put a sheet of paper, etc. so that the printing on the table may be avoided.



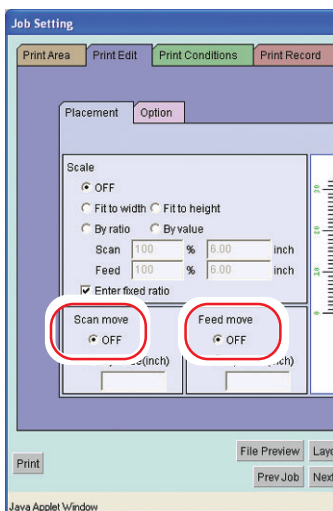
Sets at "0.0mm".



Sets "Corner2"



Sets "Corner"



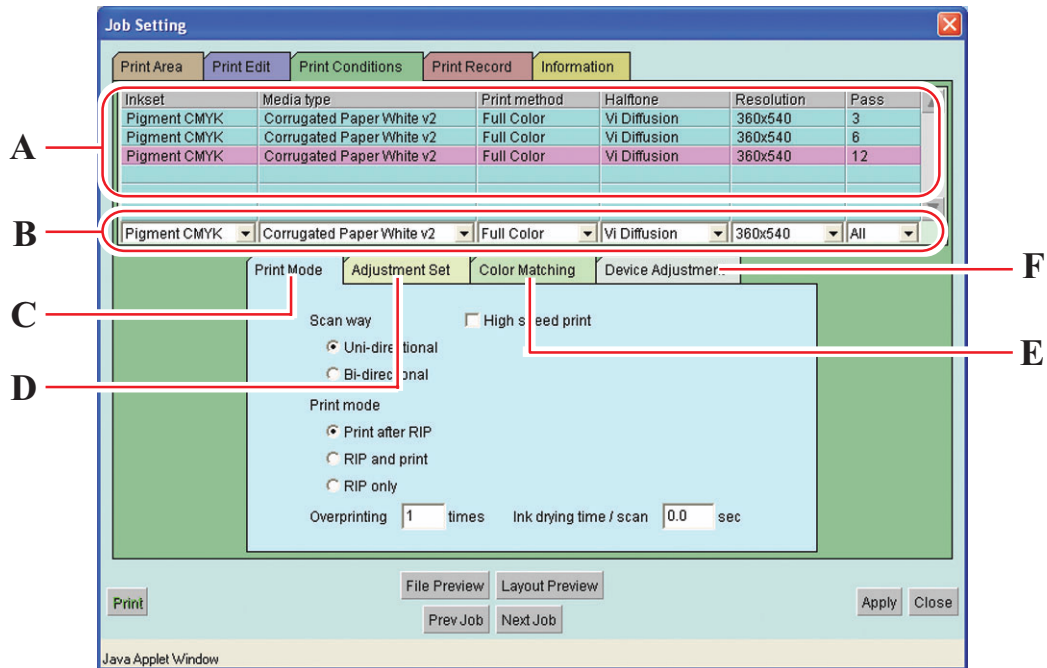
Set the "Scan/Feed move" to "OFF".



When you move the position of the image, make sure to move the origin on the printer side.

[Print Conditions] menu

This menu is for selecting profiles, print conditions and adjusting colors.



A. Profile List

Raster Link Pro has many output profiles with different combination of conditions such as ink set, media type, print method, halftoning and resolution. It is not available to print under conditions that are not registered in the profile. There is profile with “v2” in the media name. In the case of such profile you may adjust the gray balance.

B. Profile Option Menu

Use this menu to get a profile by options, when there are a lot of profiles. Selected profile is displayed in purple.

C. [Print Mode] sub menu (P. 26)

Set print mode.

D. [Adjustment Set] sub menu (P. 28)

Set each ink curve and color adjustment.

E. [Color Matching] sub menu (P. 30)

Select this menu when making the tone of displayed colors and printed colors similar to each other.

F. [Device Adjustment] sub menu (P. 32)

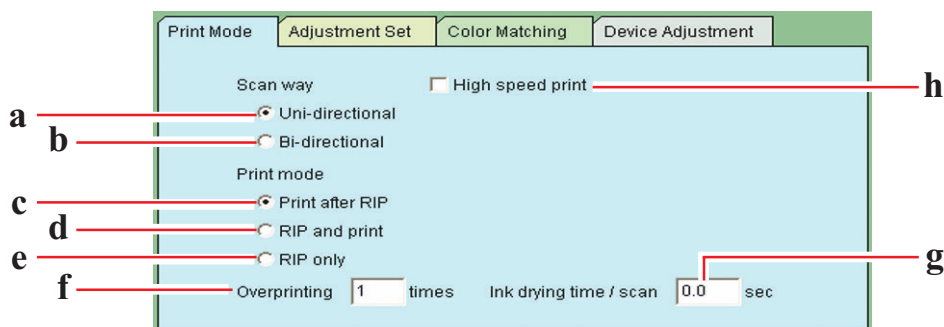
Set particular adjustment for each printer.

[Print Mode] sub menu

Set print mode.



- In the case of copying, even if you selected “RIP and print”, the printing is performed on “Print after RIP”. Accordingly, the S9me for the printer to start printing becomes longer.
- In the case of copying, even if you select “RIP only”, the printing is performed on "Print after RIP".
- When “RIP and print” is set, no reprinting may be made.



- a. Uni-directional : The print head prints one way when it moves from right to left. Print quality is better than bi-directional but the printing time is longer.
- b. Bi-directional : The print head prints both ways when it moves from right to left and left to right. The printing time is shorter than uni-directional however inferior in quality.
- c. Print after RIP : Print the file after RIP completed. Select when sending speed from Raster Link Pro to the printer is not fast enough.
- d. RIP and print : Send the data to the printer during RIP. “Color Adjustment while printing” function is available.
- e. RIP only : Only RIP is carried out. RIPPED data is saved in “Printed job” list and can be printed later.

(☞ P. 58)

f. Overprinting : Set the frequency of overprinting per line.

When output profile for overprinting (for 2 layers) is used, enter “2” in the number of overprinting.

g. Ink drying time / scan :

Set the stopping time for each scan of the head by consideration of ink drying state.

h. High speed print : High-speed printing is available to shorten the printing time. However inferior in quality.

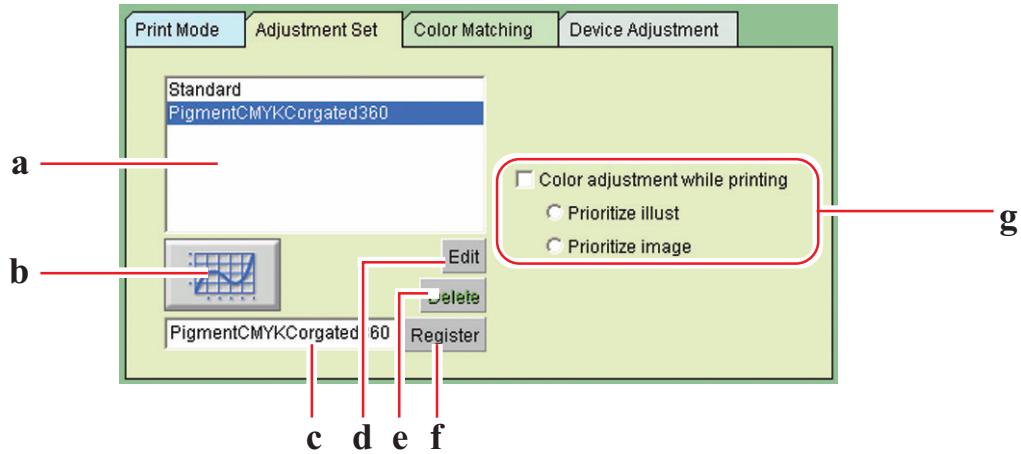


- Under the following conditions, it cannot set the high speed print.
- In case of using disperse ink.
- In case of setting the lowest least pass with pigment or dye ink.

[Adjustment Set] sub menu

Set each ink curve and color adjustment.

Adjusted conditions can be saved to [Adjustment Set] with a new name.

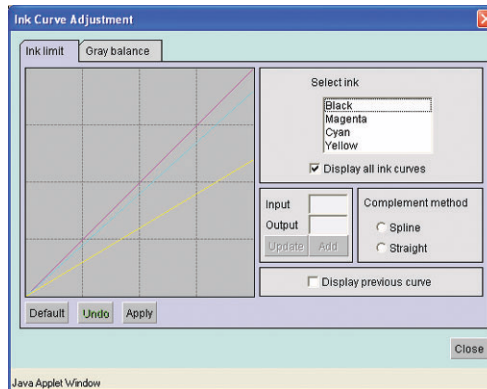


a. Adjustment set list

Display the conditions that are set and registered in adjustment set list.

b. Ink curve button (👉 P. 43)

The ink curve is used to change the density of each color ink registered in adjustment set list. When you can not print as you like, adjust the ink curve of each ink.



c. Entry box for Adjustment set name (👉 P. 37)

Enter the name of the conditions that are registered in adjustment set list.



- The following characters cannot be used.
“ / \ : ; | , * ? < > . &

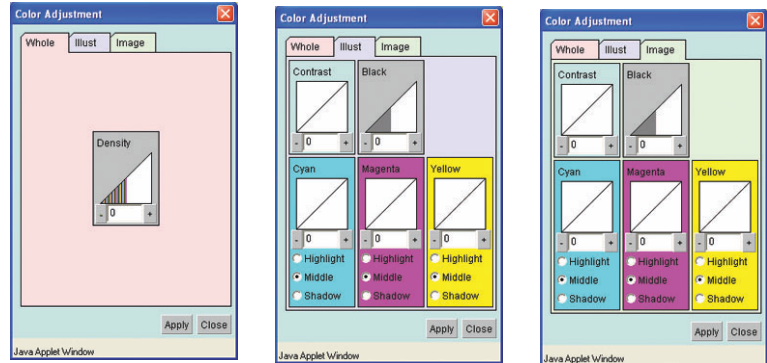
d. **Delete** button

Delete the selected in adjustment set list.

e. **Edit** button ( P. 34)

Adjust colors in the registered in adjustment set list.

The color adjustment is performed by adjusting the quantity of ink, etc. for each ink concentration, illustration and image.



f. **Register** button

Name the conditions that are set in [Adjustment Set] sub menu and save them.

g. **Color adjustment while printing** ( P. 40)

Readjust a registered adjustment during printing.

Readjusted setting is overwritten the registered one or registered in different name.

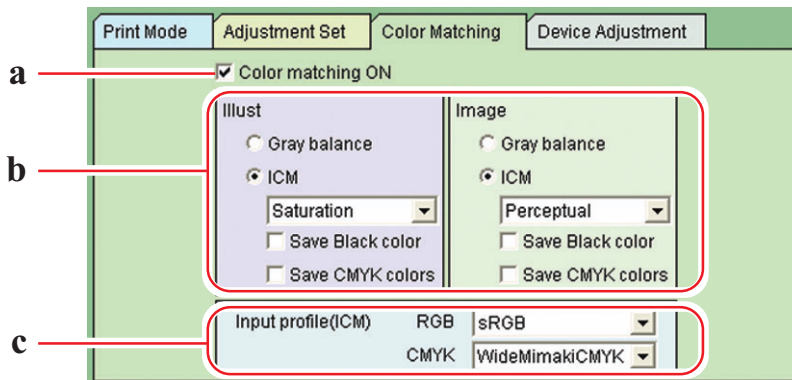
To make this function active, select “RIP and Print” in [Print Mode] sub menu.

Prioritize Illust : Color adjustment of the Vector data in a file is prior to the other.

Prioritize image : Color adjustment of the Raster data in a file is prior to the other.

[Color Matching] sub menu

Select this menu when making the tone of displayed colors and printed colors similar to each other.



a. Color matching ON

Select to activate color matching function.

Conditions that are set in [Color Matching] sub menu are adopted when printing.

b. Illust / Image

Set separately color matching of illustration part and that of image part within a file.

Gray balance :

Adjust the density of each ink without mixing colors, like only cyan is used in the cyan part.

ICM :

Color matching is processed with mixing colors.

Usually select this option.

Perceptual Suitable to print images (photos). Maintain the lightness of colors

Saturation Suitable to illustrations. Maintain the saturation as much as possible within the color region

Relative Maintain relative color region. When matching colors, take in consideration the amount of white on the media. For example, the data is printed a little more yellowish than displayed on the screen, when printed on the yellowish media.

Absolute Maintain absolute color region. Match colors according to recognized color values. For example, the data is printed just as displayed on the screen, without considering the media color, even when printed on the yellowish media.

Save Black color :

Pure black color is printed without color matching.
Black part is printed without mixing CMY ink.

Save CMYK colors :

Pure CMYK colors are printed without color matching.
e.g.) Cyan part is printed in cyan ink without mixing MYK ink.

c. Input profile (ICM)

Select an Input profile for RGB data and CMYK data individually. Usually use the following default values.

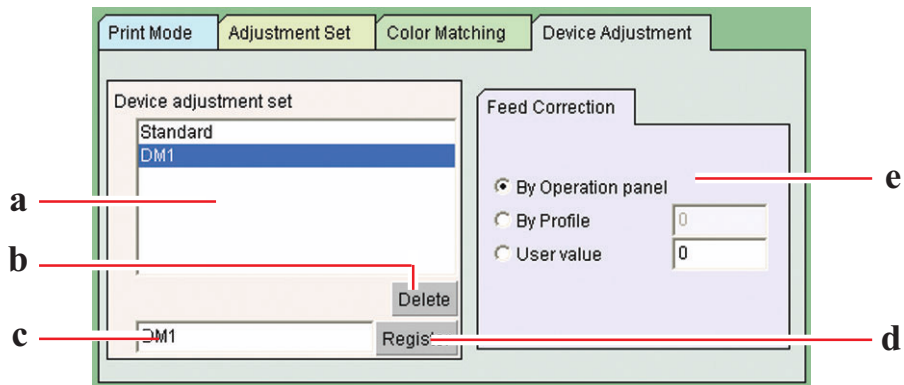
RGB sRGB

CMYK WideMimakiCMYK

[Device Adjustment] sub menu

Set particular adjustment for each printer.

Functions that are set here do not depend on output profile like color adjustment set.



a. Device adjustment set list

Display the names that are set and registered in “Device adjustment set.”

Device adjustment set is a file registered by putting the name to the values set and registered in [Device Adjustment] sub menu.

b. Delete button

Delete the selected “Device adjustment set.”

c. Entry box for registering name

Enter the name of the conditions that are set in [Device Adjustment] sub menu.
Entering the media name is convenient.



CAUTION

- The following characters cannot be used.

“ / \ : ; | , * ? < > . &

d. Register button

Name the conditions that are set in [Device Adjustment] sub menu and save them.

e. Feed Correction

DM2-1812 performs the printing while feeding the table toward you. When the prepared image cannot be printed neatly due to streak defects, etc., adjust the feed rate of the table. You may set which of the following Feed Corrections will have the priority.

By Operation panel

Take priority the value set on the operation panel of the printer.

By Profile

Take priority the value registered the selected profile.

When no value is registered, “0” is displayed.

User value

Printer works according to the value that is entered in the box.

When button of “Print Edit” window is clicked, the value is informed to the printer.

Color Adjustment

Adjust the color of an image. Register it in “Adjustment set” sub menu.

Adjustment set is created for each profile.

Adjustment set can be registered in the following two ways.

- 1) Register adjustment set for each profile in [Print Conditions] menu. On “Waiting for Print Edit” list, adjustment set of the print file can be registered or edited at printing.
- 2) As initial setting of the printer, register adjustment set by “Device adjustment” window.

This is convenient for printing directly without print editing.

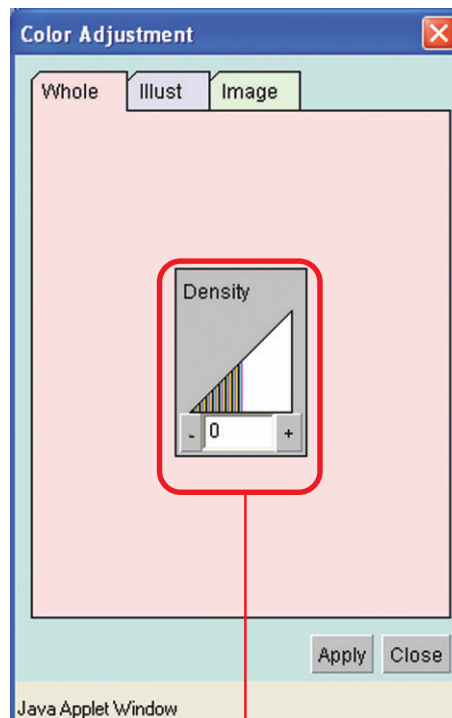
During the process of printing, adjust the color and register it as the adjustment set.

“Color Adjustment” window

When click or , the value changes every five. Also enter any value in a box.

You may also enter directly the integral number density value box.

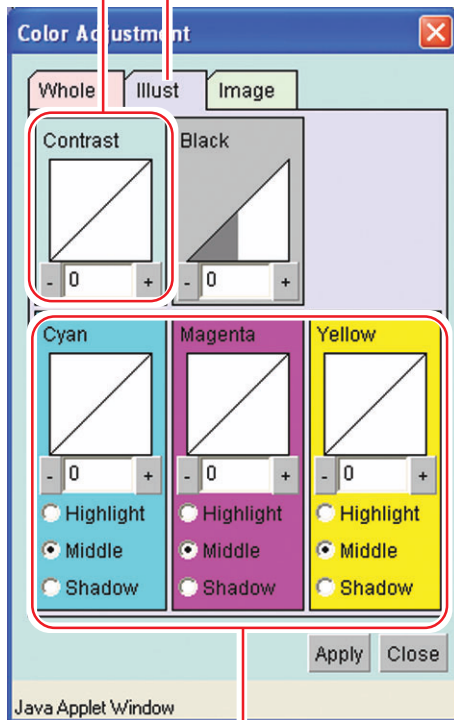
The value can be set in a range from minus 50 percent to 50 percent.



Adjust the maximum amount of each ink.
This setting is reflected on both illustration and image.
When whole density is set plus, you can get a deeper color exceeding the ink limit of each color that is set at the profile.

Adjust contrast of an image. Contrast becomes higher with larger value and lower with smaller value.

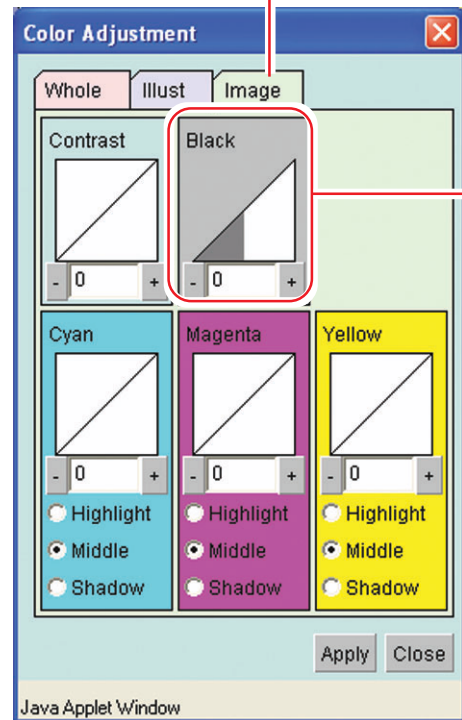
Adjust color of illustration in a file.



Adjust the amount of ink in Highlight, Middle, or Shadow. To set in detail, adjust ink curve.

Adjust the amount of black ink. With larger value, the amount of black ink increases while that of cyan(C), magenta(M) and yellow(Y) decreases. As the black in dark area which CMY is mixed with black dries with difficulty, take above measures to get dry easily.

Adjust color of photo-like image in a file.



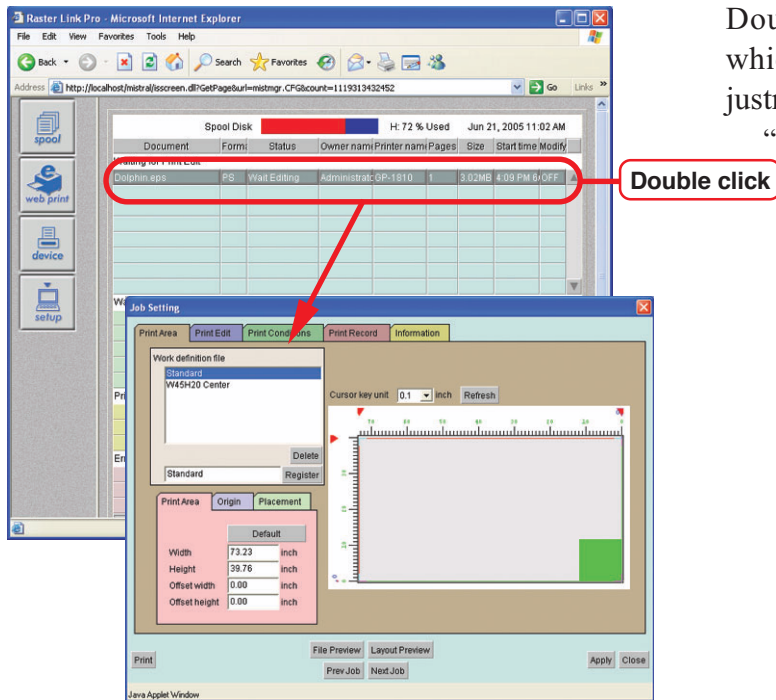
Registering a color parameter file making a print adjustment set

Make a print adjustment set for each profile.

Print adjustment set can be made irrespective of pass.

When the print condition such as ink setting, media, output method, half tone, resolution except pass is identical, the same print adjustment set can be made.

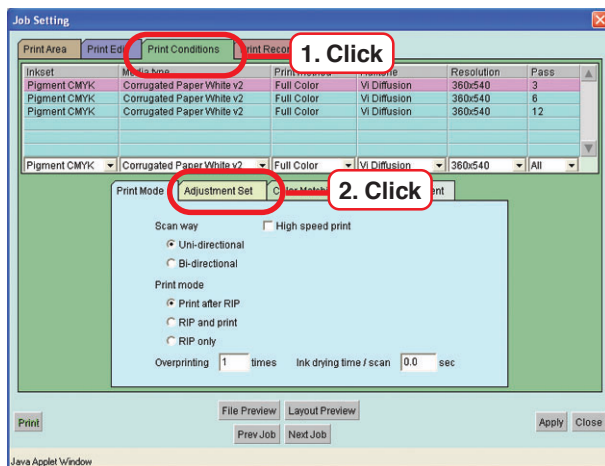
1



Double click the printing file to which you want to apply print adjustment set.

“Job setting” window will open.

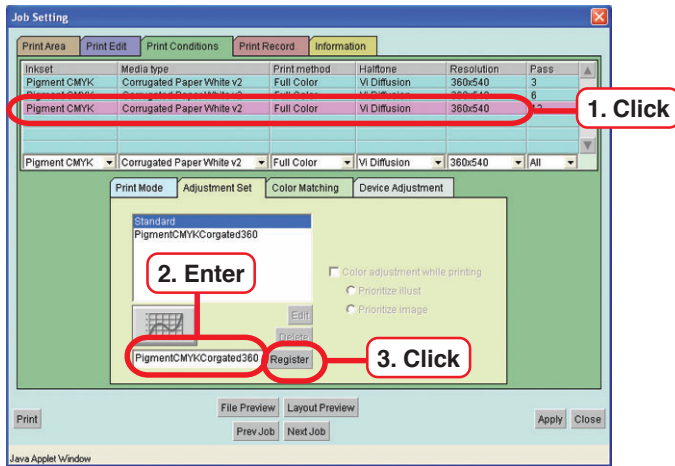
2



Click [Print Conditions] menu.

Click [Adjustment Set] sub-menu.

3



Select the profile for use.

Enter the name of print adjustment set.



The following characters cannot be used.

“ / \ : ; I , * ? < > . &

Enter the name according to the profile needed to adjust color .

Up to 31 letters are available.

(Example: SolLcLmTarp720)

Click **Register** button.

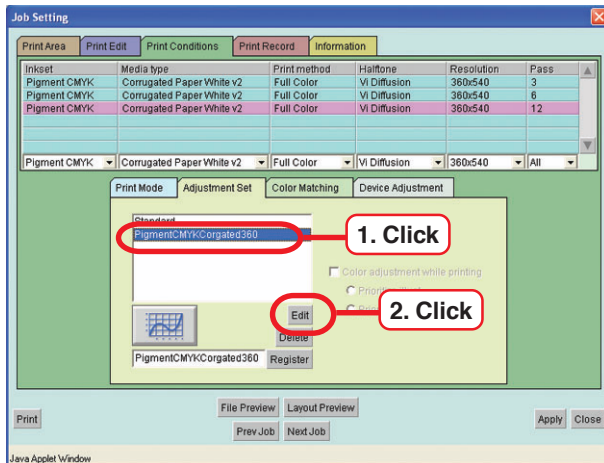
When there is already the same name , it is written over.




When making new adjustment set, select “Standard” to click **Register** button.

When registering new by editing registered print adjustment set, select and rename them to click **Register** button.

4



Click the registered adjustment set.

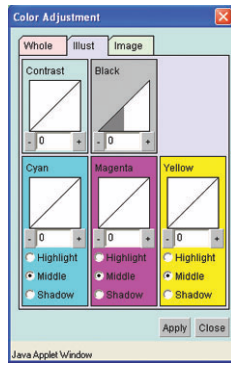
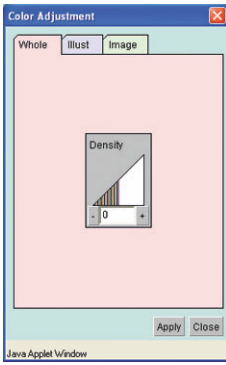
At this time, ink curve button  becomes active. (P.43)

Click **Edit** button.



Click Delete button to delete the selected print adjustment set.

5

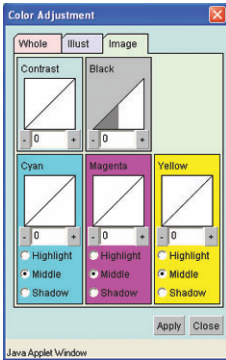


Execute various adjustment.

Click **Apply** button.

Save print adjustment set.

Click **Close** button.



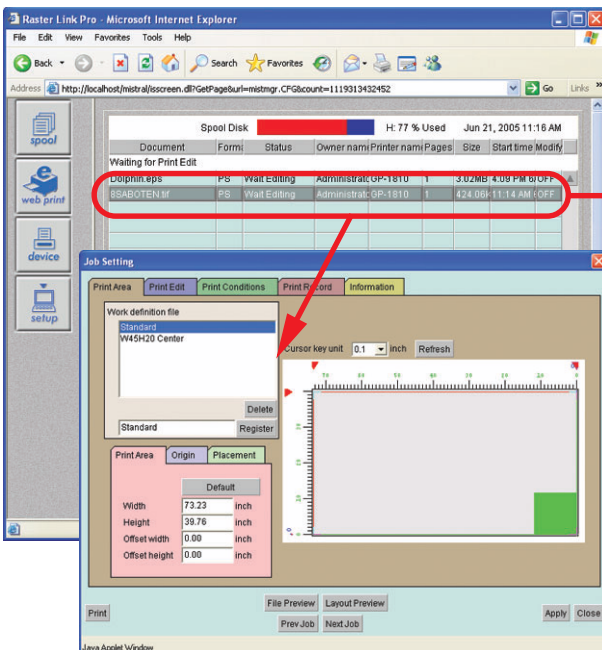
Print by using adjustment set

Print by using registered print adjustment set.



- Make adjustment set for each profile. The profile for use is selected at making print adjustment set.

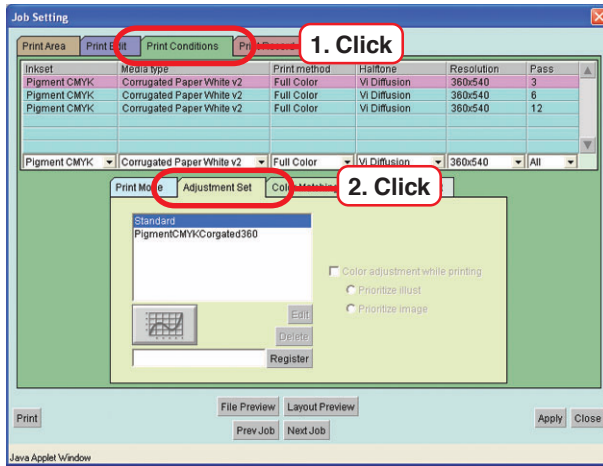
1



Double click the print file on “Spool” window.

“Job Setting ” window opens.

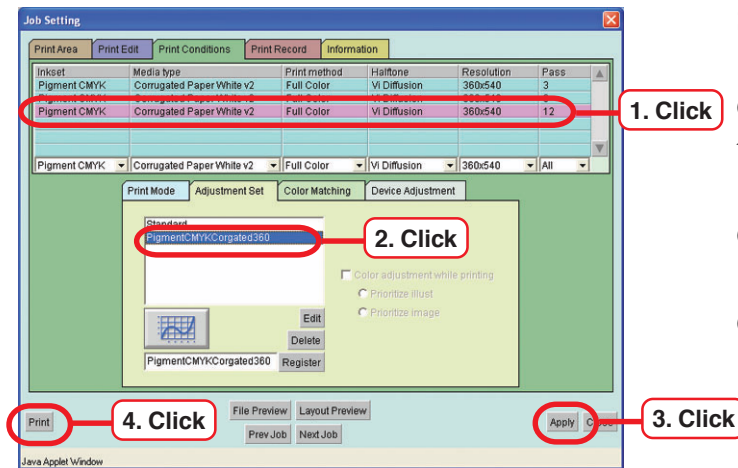
2



Click [Print Conditions].

Click [Adjustment Set].

3



Select the profile for use.

Click print adjustment set made from the selected profile.

Click Apply button.

Click [Print] button.

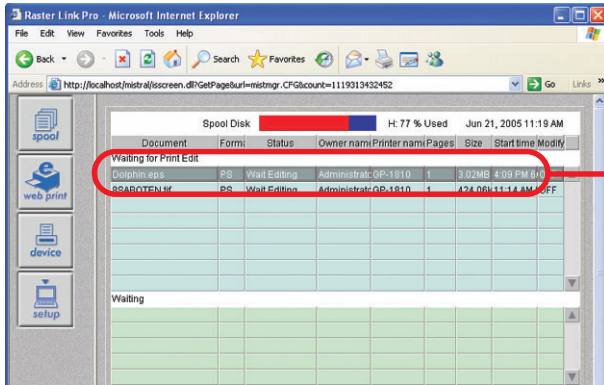
Start printing by using the selected color set.

Adjust color during printing

Readjust registered adjustment set during printing.

Readjusted setting is written over the registered one or registered in different name.

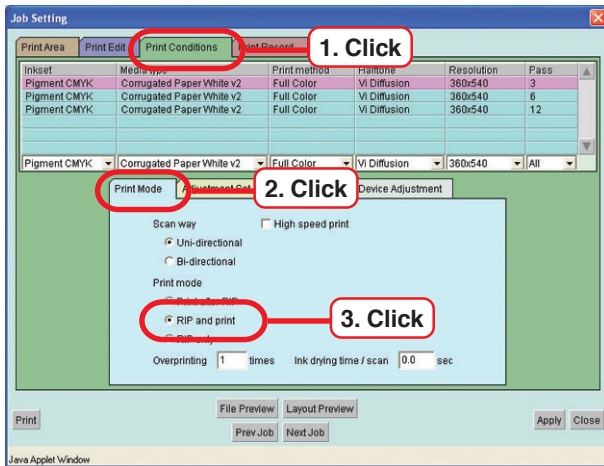
1



Double click the print file using adjustment set.

“Job Setting” window opens.

2



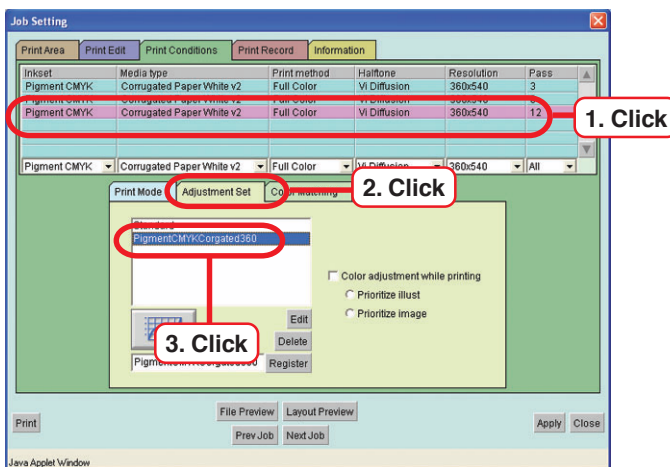
Click [Print Conditions].

Click [Print mode].

Click “RIP and Print”.

This enables setting of “Color adjustment while printing” in [Adjustment Set] sub menu.

3



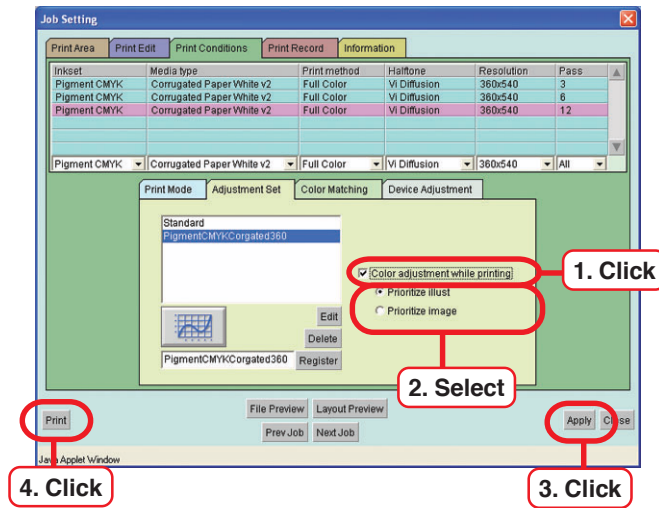
Select the profile for use.

Click [Adjustment Set].

Click the name of print adjustment set which is made from the selected profile.

Even if selecting “Standard” in “AdjustmentSet”, adjustment can be executed during printing.

4



Click “Color adjustment while printing”.

Select the item using adjustment set.



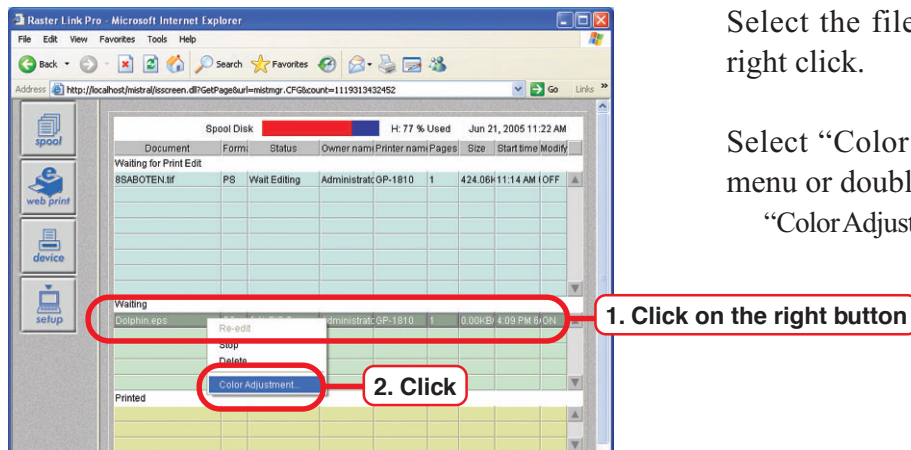
As for color adjustment during printing, color adjustment of either image or illustration is applied to both images and illustrations.

Click **Apply** button.

Click **Print** button.

Start printing.

5

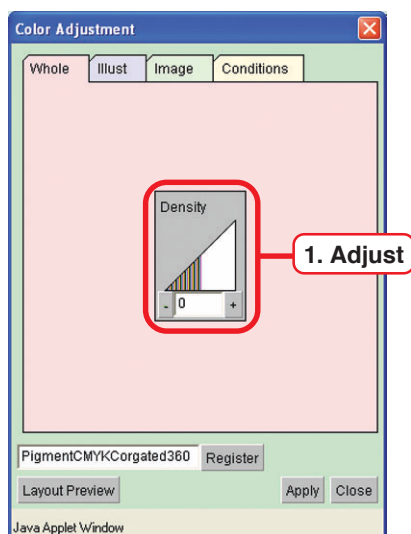


Select the file under printing and right click.

Select “Color Adjustment” in sub menu or double click the print file.

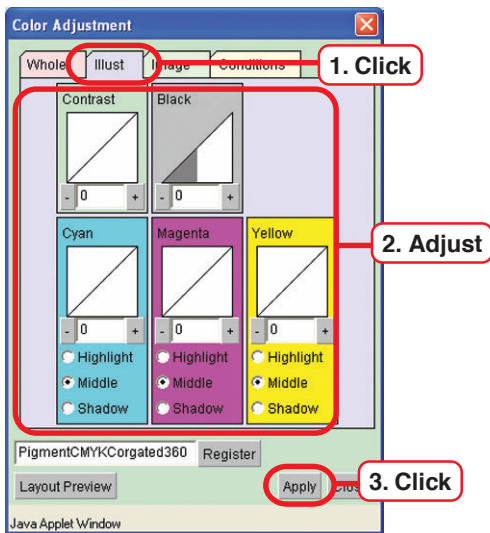
“Color Adjustment ”window opens .

6



Adjust the “Density”.

7



Click the image type selected in the process 4.

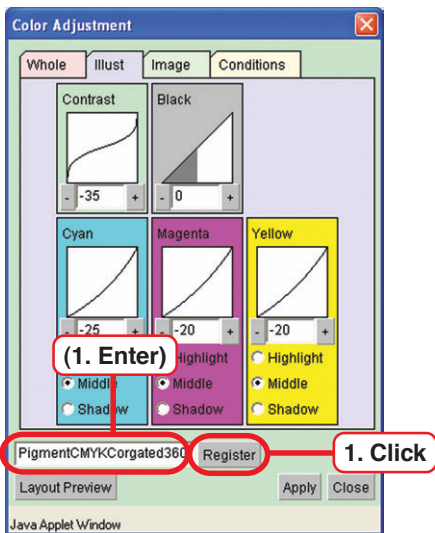


- This adjustment is applied to all images and illustrations. As shown in the left, color adjustment of illustration is also applied to image.

Click **Apply** button and readjusted value is reflected in printing.

Repeat Step 7 several times to obtain appropriate color adjustment.

8



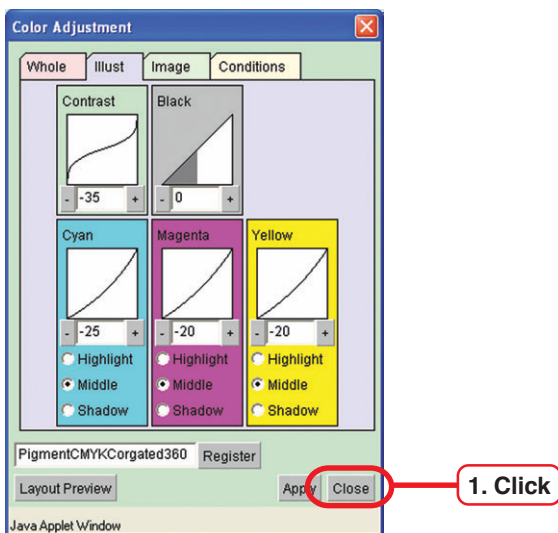
Click **Register** button.

Write over adjusted value .



- When new adjustment set is registered, enter the name of the setting.

9



Click **Close** button.

Adjust color in detail (Ink Curve Adjustment)

When you can not adjust color enough, adjust the ink curve of each ink.
The ink curve is used to change the density of each color ink.

Two kinds of “Ink Curve Adjustments” are available.

- “Ink limit” curve : Adjust the ink density as a whole.
- “Grey balance” curve : Adjust the ink density using only four colors Black, Cyan, Magenta and Yellow.

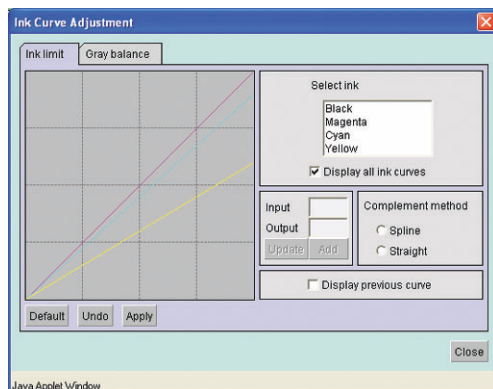
Grey balance adjustment is available when selecting the profile whose media name includes “V2.”

Grey balance curve becomes active when “Grey balance” is selected in the [Color Matching] sub menu in [Print Condition] menu.

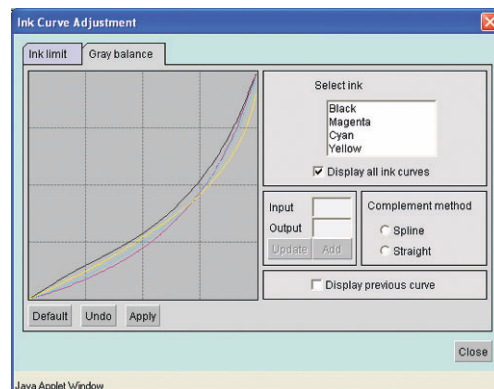


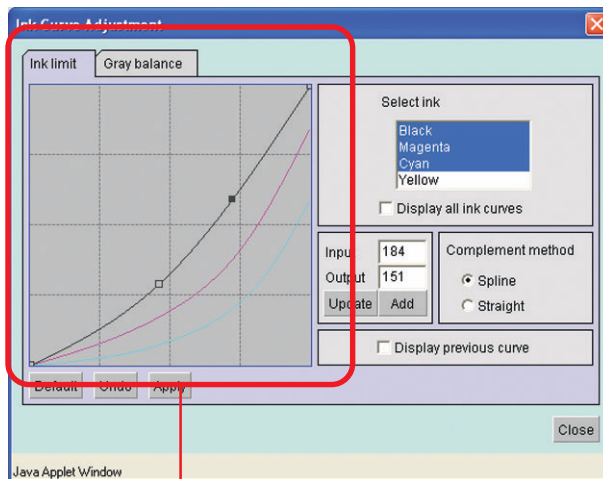
- “Adjustment set” adjusts image and illustration separately, but the ink curve is reflected on all images and illustrations.

“Ink limit” curve



“Gray balance” curve



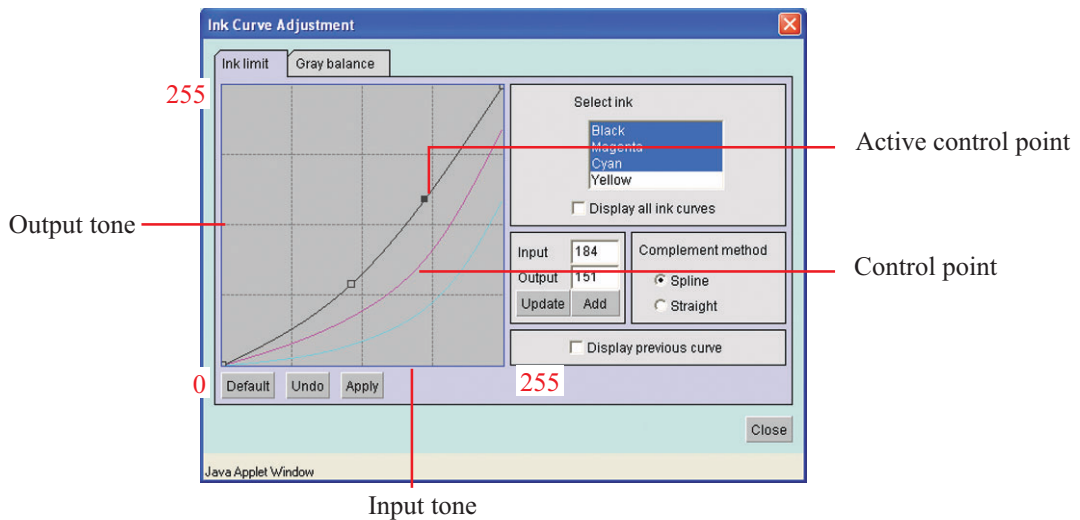


Ink curve :

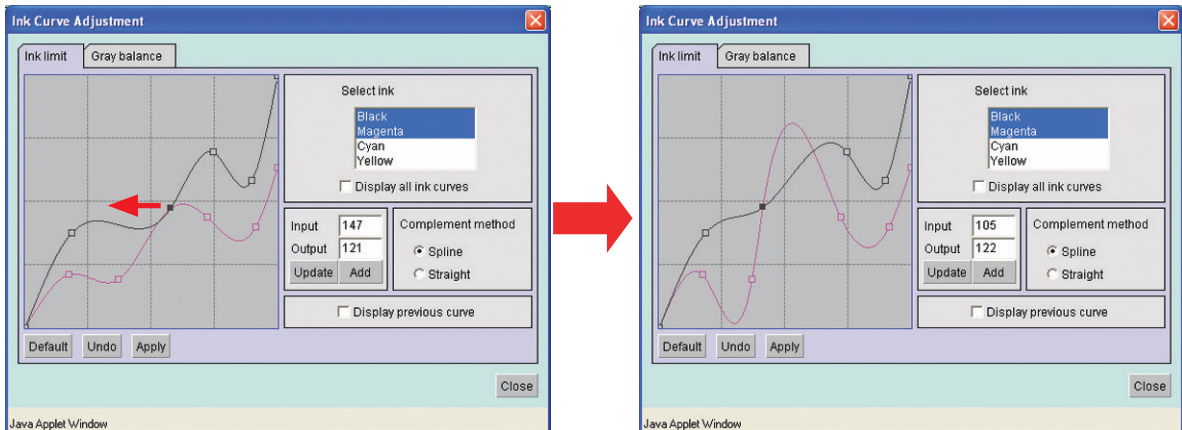
Display the ink curve of color selected from “Select ink”.

The X-axis indicates the ink density before adjustment (input tone) and the Y-axis indicates the ink density after adjustment (output tone). Both axes indicate in a range from 0 to 255. The output tone is set to 0 if below 0 and to 255 if over 255.

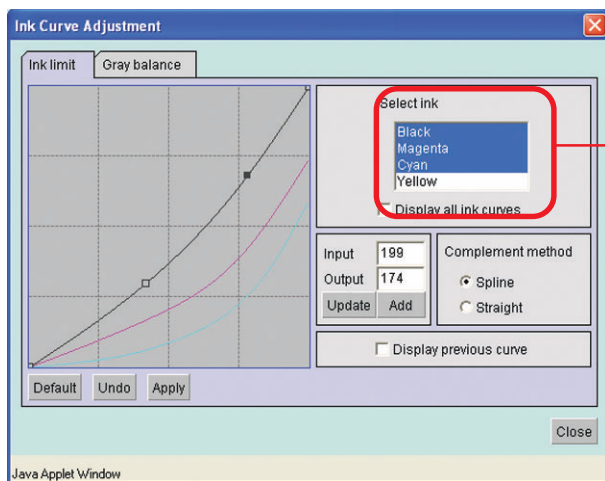
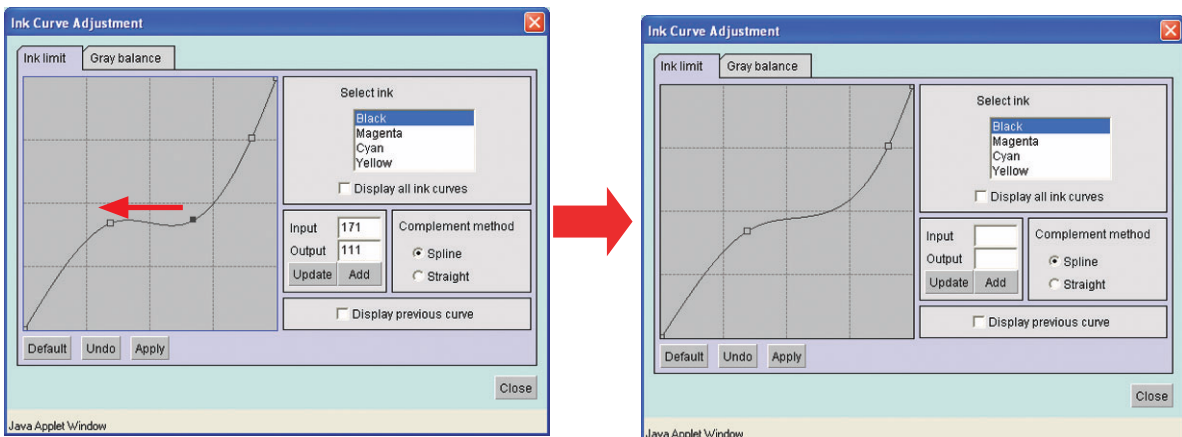
Make a control point with clicking the point on the curve. Up to 30 control points can be added. A selected control point changes from a white rectangle into an ink color one.



When changing several ink curves at a time, drag the point where the ink curves of several colors are intersecting or adjoining each other, or push arrow key to move a control point.



Delete a control point, drag the point to outside of the adjacent one or push Delete key or Back Space key by keyboard.



“Select ink” list :
Display the inks selected from the ink set in the [Print Conditions] menu.

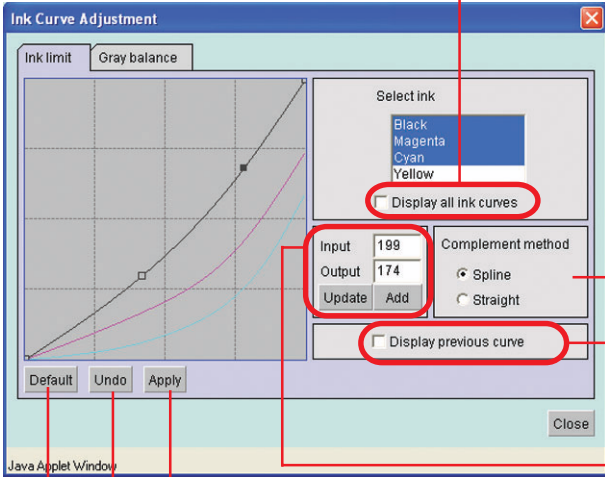
To select more than one ink :
Windows Click names continuously
Mac OS 8~9 Command key + Click
Mac OS X Shift key + Click
To deselect :
Windows Click
Mac OS 8~9 Command key + Click
Mac OS X Command key + Click

Display all ink curves:
 Display all ink curves. To select the ink curve, click the ink name on the Ink list.

Complement method:
 Select "Spline" or "Straight".
 When clicking an ink name on the "Select ink" list, display the current complement method.
 When select several inks and their complement methods are different, display the complement method of the first ink that has been selected.

Display previous curve :
 Display the previous ink curve with a broken line in the last of the selected ink.

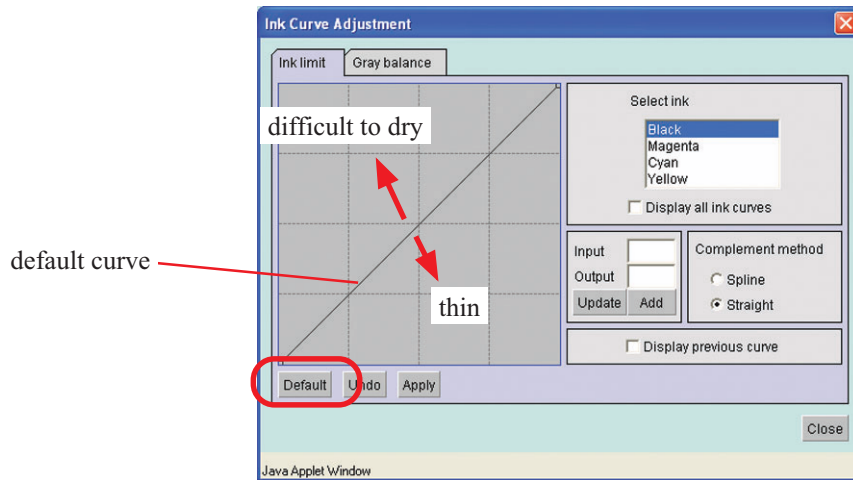
Enter the value of input tone and output tone to adjust control point. When adding the control point, enter the value, and click [Add] button. Note that the changed control point can not be set across the adjacent one.



[Apply] button :
 Register the updated ink curve.

[Undo] button:
 Return the ink curve of an ink selected on "Select ink" list to the status before apply.

[Default] button:
 Read in ink limit value selected on Ink list from the profile.
 When setting a smaller value than the ink limit, the color becomes thin and a larger value, the ink becomes difficult to dry.

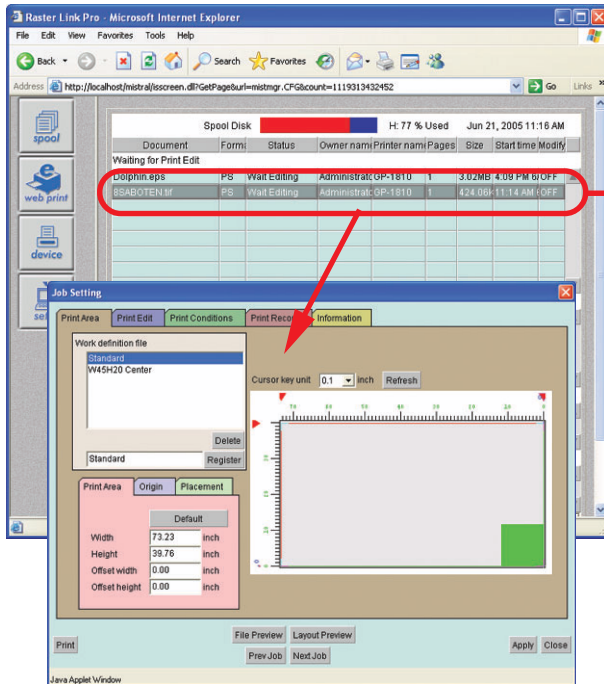


Adjust an ink curve

Adjust an ink curve at [Adjustment Set] sub menu in [Print Condition] menu. If adjustment set is not made, create a new one.

For details, see “Register a color parameter file making a print adjustment set”. (P. 36)

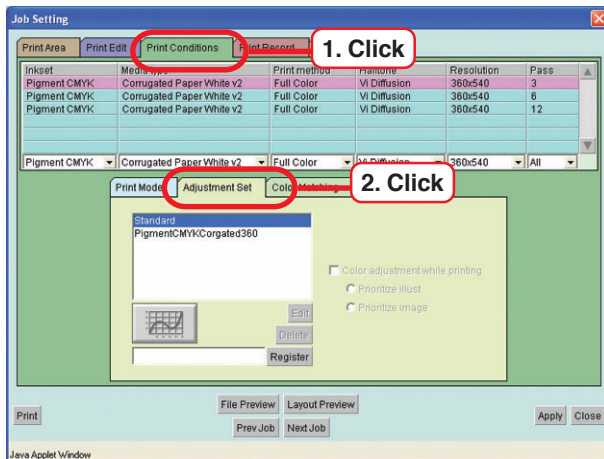
1



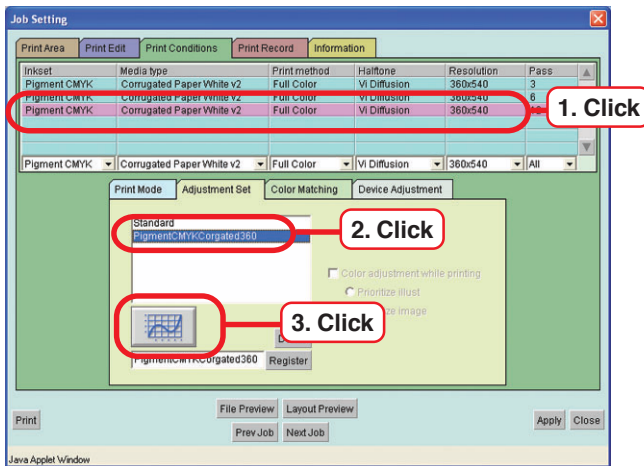
Double click the print file for adjusting an ink curve.

“Job Setting” window opens.

2



3

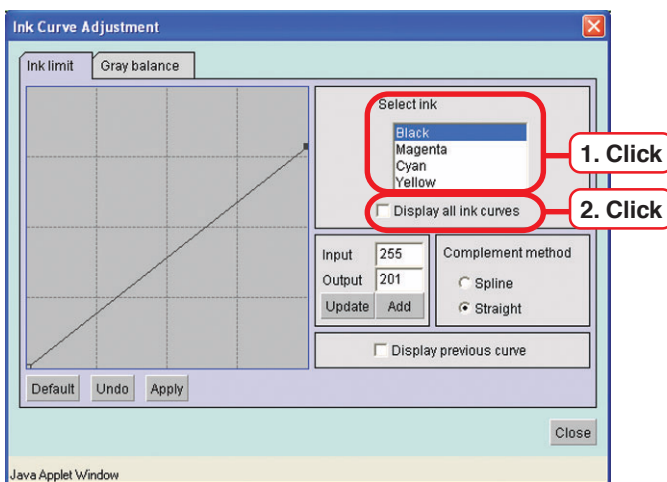


Select a profile to adjust the ink curve.

Click print adjustment set made in the selected profile.

Click  button.

4



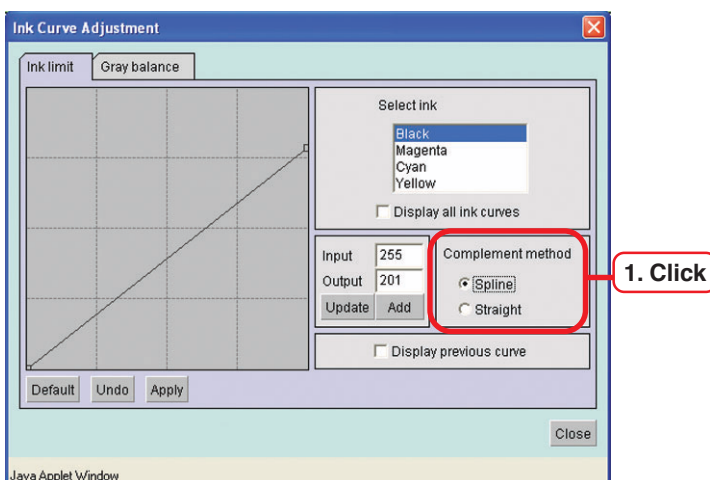
Click the ink color from “Select ink” to adjust ink.

To select more than one ink :
 Windows Click names continuously
 Mac OS 8~9 ... Command key + Click
 Mac OS X Shift key + Click

To deselect :
 Windows Click
 Mac OS 8~9 ... Command key+ Click
 Mac OS X Command key + Click

Annul “Display all ink curves” if necessary.

5

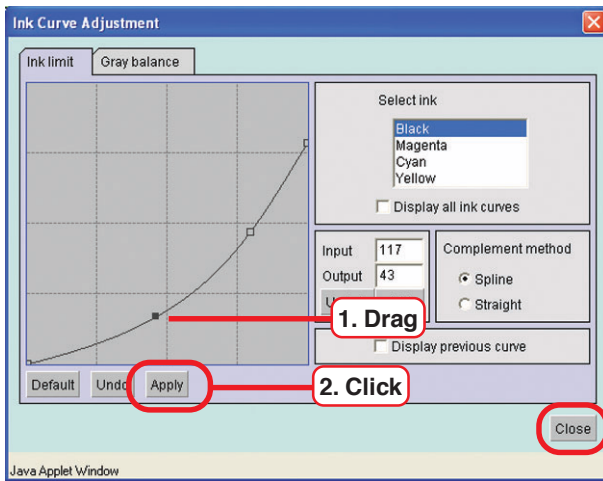


Select “Complement method”.

Display the current complement method when click an ink name on “Select ink” list.

When select several inks and their complement methods are different, display the complement method of the first ink that has been selected.

6



Adjust the ink curve.

As for adjustment, see “Adjust color in detail (Ink Curve Adjustment)”.

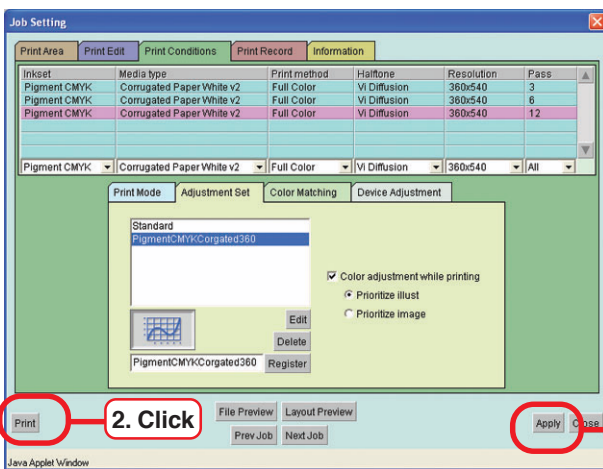
(☞ Page 65)

Click **Apply** button.

Update the ink curve.

Click **Close** button.

7



Click **Apply** button.

Renews the print adjustment set.

Click **Print** button.

Starts printing.

Set an ink curve by keyboard

Adjust an ink curve by keyboard but dragging a control point with the mouse.

Use the following keys.

- **Z** key : Select control points to the left way.
- **X** key : Select control points to the right way.
- **Delete** key / **Back Space** key : Delete control points.
- Move control points in the direction of Arrow key(**←** , **→** , **↑** , **↓**).

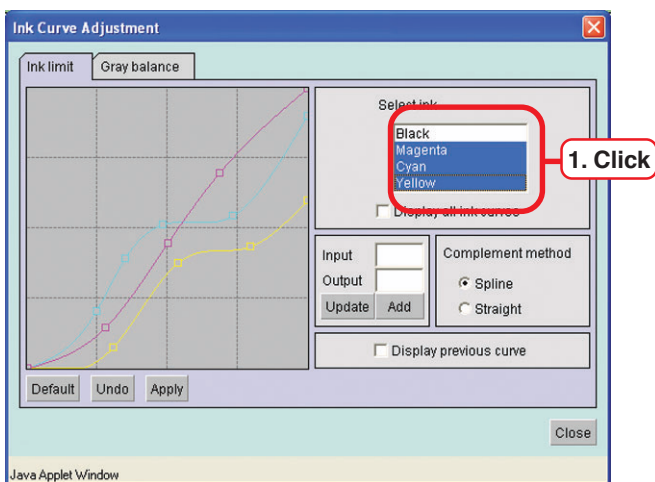
When adjust control points where several ink curves are intersecting or adjoining at a time, adjusting by keyboards is more convenient.

In this section, explains how to adjust several ink curves by keyboard.



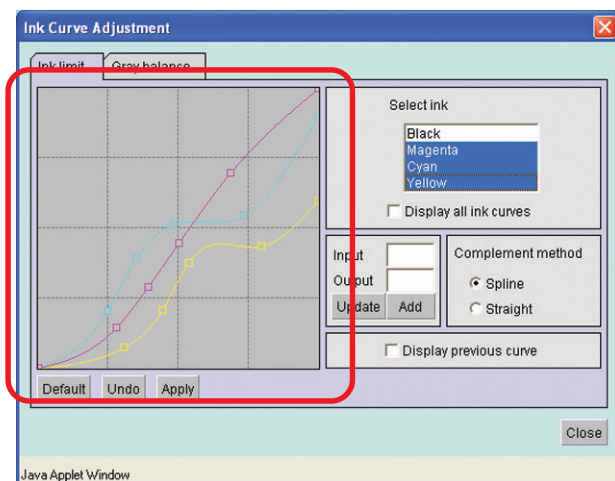
- It is required that the number of control points is equal in each ink curve.

1



Select the ink name to adjust from “Select ink” list.

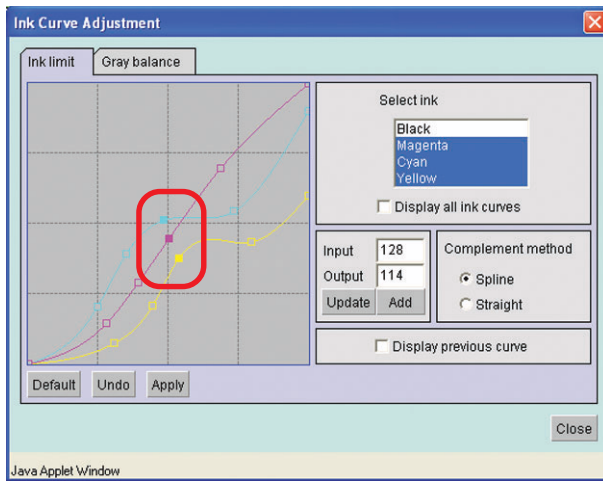
2



Push **Tab** key to select the ink curve area, or click the ink curve area with the mouse.

The ink curve area being surrounded by blue frame, the ink curve area is selected.

3

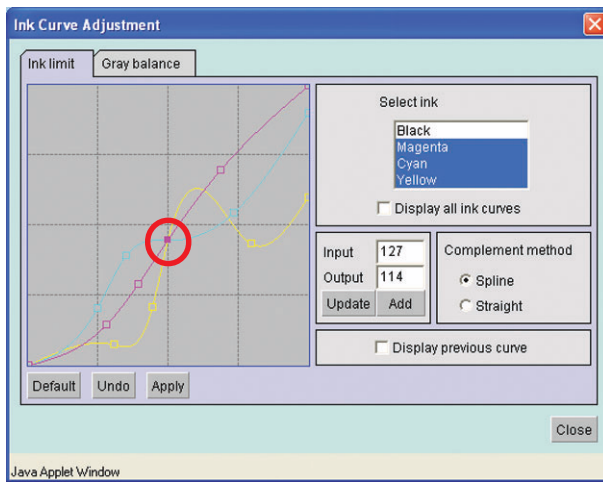


Select control points by **[Z]** or **[X]** key.



- When the control points can not be selected even by pushing keys, check the following.
- Is the number of control points in each ink curve equal?
- Is the ink curve area selected?

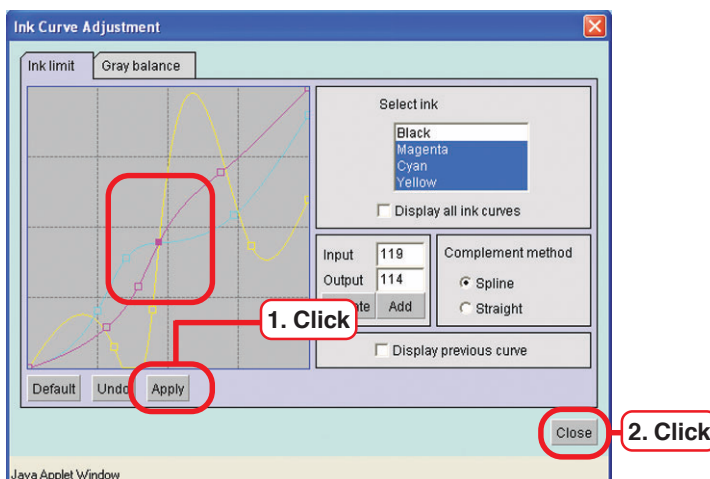
4



Push either arrow key once.

The selected control point moves to the control point of the ink that is shown at the top of the “Select ink” list. In this case, every control points move to black’s ink control point and display the input and output values of black's control point.

5



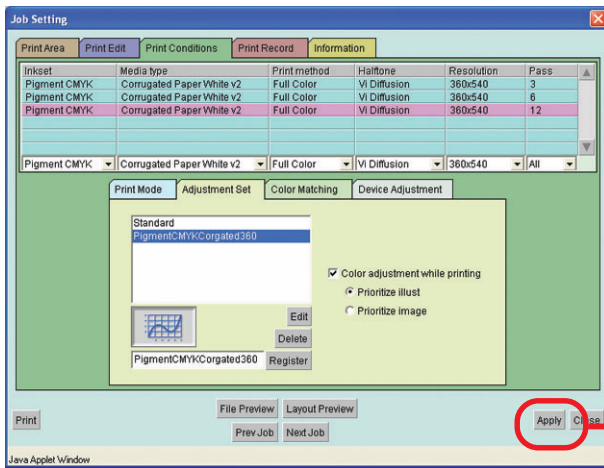
Adjust a control point by Arrow key.

Click **[Apply]** button.

Update the ink curve.

Click **[Close]** button.

6

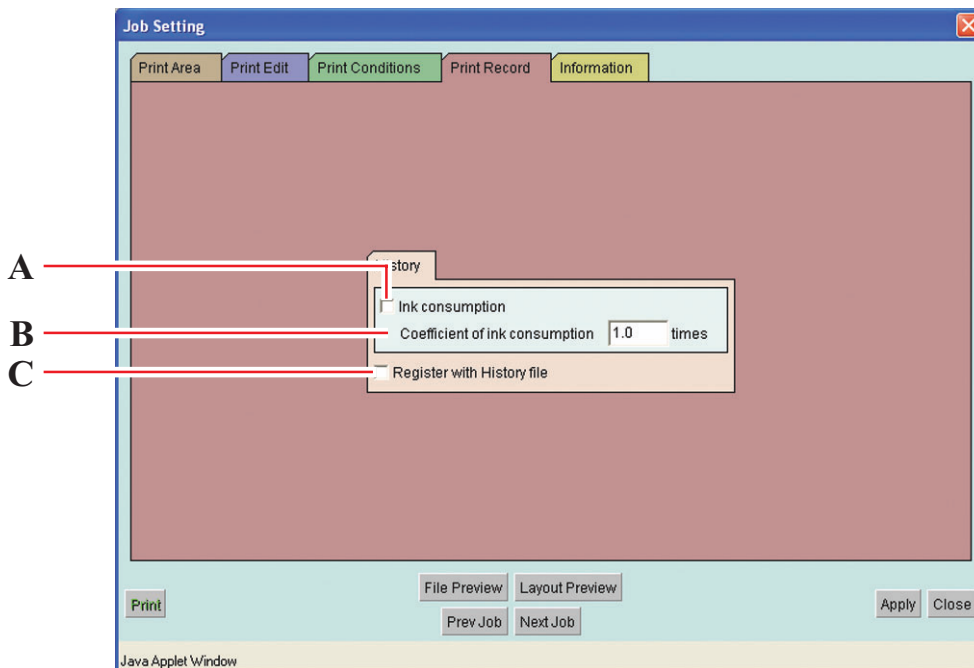


Click **Apply** button..
Update the adjustment set.

Click **Close** button.

[Print Record] menu

History file recording the setting of ink consumption coefficient to display precise ink consumption and printing conditions, etc. can be stored.



A. Ink consumption

Ink consumption of already printed file is displayed on the “Job Information” window. (☞ P. 56)

B. Coefficient of ink consumption

Ink consumption is calculated analyzing the image data.

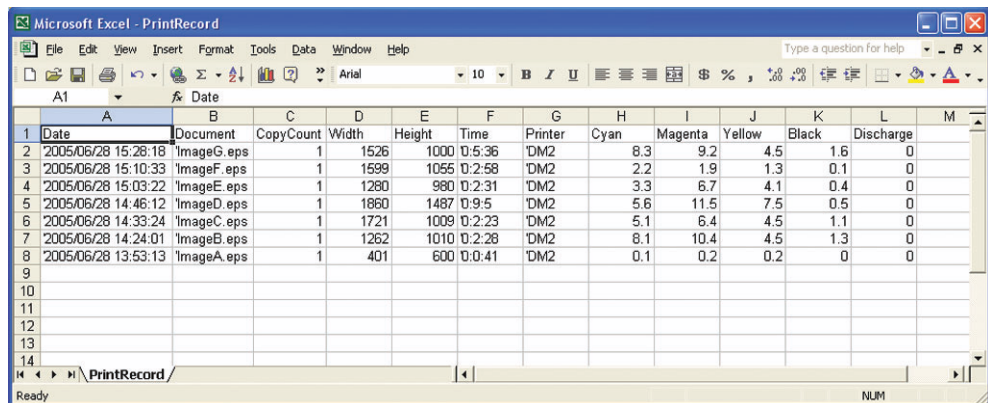
Since auto-cleaning function or refresh function is employed when cleaning is performed, ink is consumed for purposes other than image making. The ink used for purposes other than image making is set as ink coefficient. When the value of the refresh level is big, set the ink coefficient on the rather big side.

Settable range of coefficient: 0.01 - 9.99

C. Register with History file

Date, Document, Copy Count, Width(mm), Height, Time, Printer, Consumption of each color will be stored as history file. The consumption of each ink will be shown in terms of 0.1ml unit.

The history file is called PrintRecord.csv and is stored in \RSTRPROUsers\History folder.



	A	B	C	D	E	F	G	H	I	J	K	L	M
1	Date	Document	CopyCount	Width	Height	Time	Printer	Cyan	Magenta	Yellow	Black	Discharge	
2	2005/06/28 15:28:18	'ImageG.eps	1	1526	1000	0:5:36	'DM2	8.3	9.2	4.5	1.6	0	
3	2005/06/28 15:10:33	'ImageF.eps	1	1599	1055	0:2:58	'DM2	2.2	1.9	1.3	0.1	0	
4	2005/06/28 15:03:22	'ImageE.eps	1	1280	980	0:2:31	'DM2	3.3	6.7	4.1	0.4	0	
5	2005/06/28 14:46:12	'ImageD.eps	1	1860	1487	0:9:5	'DM2	5.6	11.5	7.5	0.5	0	
6	2005/06/28 14:33:24	'ImageC.eps	1	1721	1009	0:2:23	'DM2	5.1	6.4	4.5	1.1	0	
7	2005/06/28 14:24:01	'ImageB.eps	1	1252	1010	0:2:28	'DM2	8.1	10.4	4.5	1.3	0	
8	2005/06/28 13:53:13	'ImageA.eps	1	401	600	0:0:41	'DM2	0.1	0.2	0.2	0	0	
9													
10													
11													
12													
13													
14													

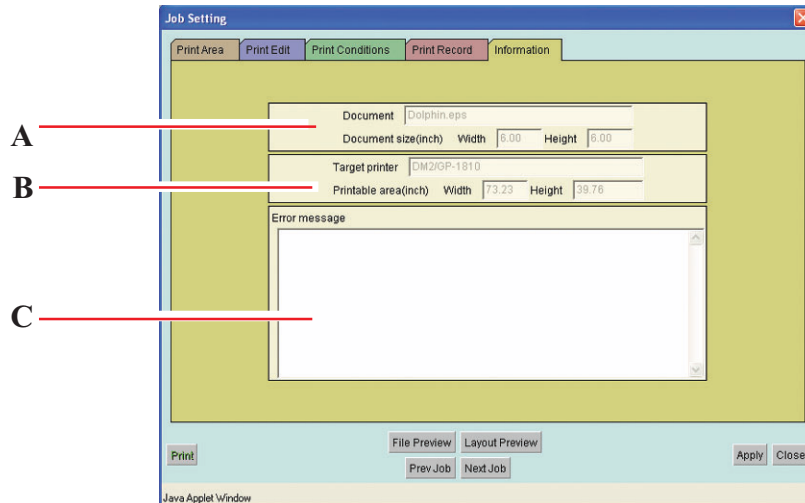
Each time you make the image, the history is added on the History file.

The History file may be deleted. (☞ P. 60)

[Information] menu

In the [Information] menu, “Document” name, “Document size”, “Target printer”, and “Error message” are displayed

If the setting in “Job Setting” window is not proper, “Information” window opens and displays the error in the “Error message”.

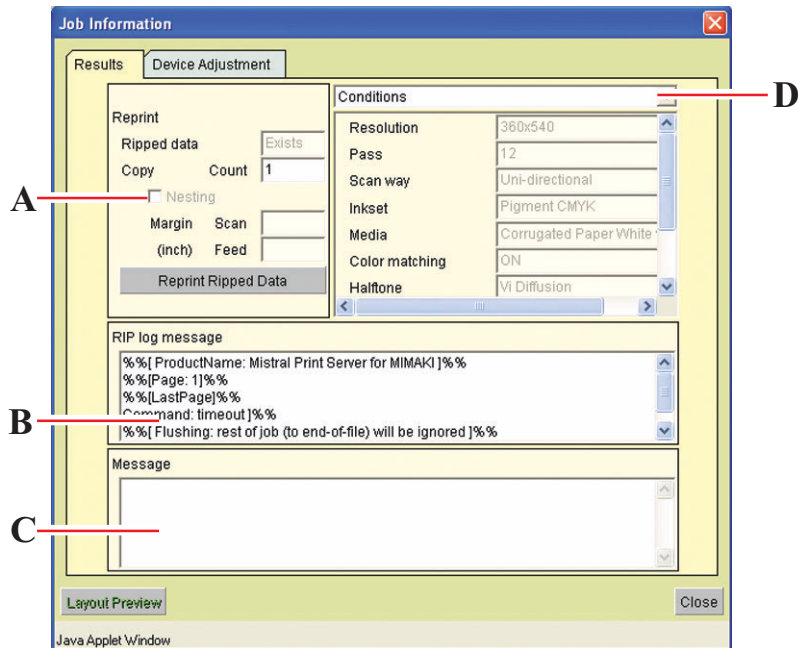


- A. Document, Document size**
Display the name of print file and the size of printing image.
- B. Target printer, Printable area**
Display the printer and printable area.
- C. Error message**
Display the error information.

“Job Information” window

“ Job Information” window opens by double clicking the file in “ Printed” joblist.

[Results] menu



A. Reprint

When Ripped data is in the print file, reprinting is available under the same condition of margin, number of copies and other conditions that are set at [Device Adjustment] menu.

Ripped data is deleted in descending order from the oldest Ripped data depending on the HDD capacity.

B. RIP log message

Display the information about PostScript.

C. Message

Display the error information.

D. **Layout Preview** button

Preview an image actually printed on the media.

E. **Close** button

Close “ Job Information” window.

F. **Conditions/Source data/Result**

Display Print conditions, Source data and Result.

“Ink” is indicated when “Ink consumption” of [PrintRecord] menu is enabled.

Conditions	
Inkset	Pigment CMYK
Media	Corrugated Paper White
Color matching	ON
Halftone	VI Diffusion
Overprinting	1 times
Ink drying time / scan	0.0 sec
Print adjustment	PigmentCMYKCorgated3

Source data	
Document	Dolphin.eps
Date	16:09 2005/06/16
Format	PS
Owner	Administrator
Printer	GP-1810
Page count	1 pages
File size	3.02MB
Document size	6.00 x 6.00 inch

Result	
Status	Printed
RIP time	82.6 sec

Ink	
Ink consumption	μ l
Cyan	951
Magenta	538
Yellow	2,442
Black	76

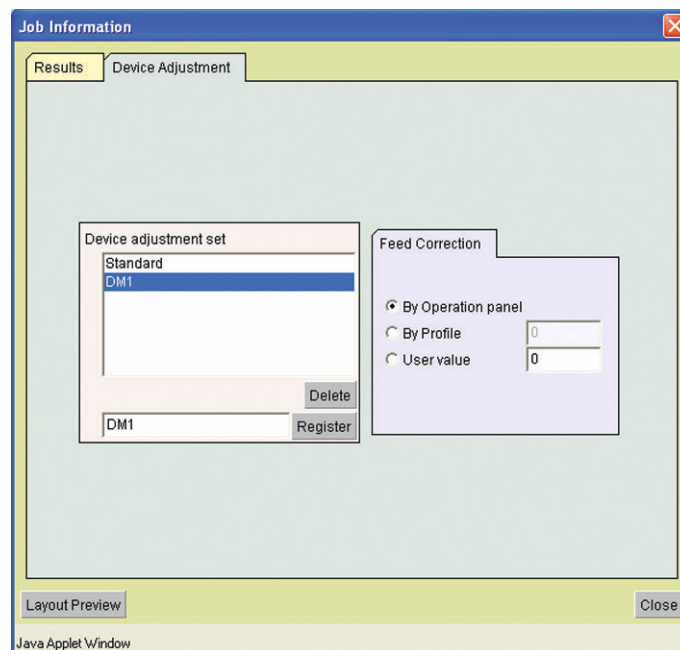
[Device Adjustment] menu

In case the data has been printed once and the Ripped data remains; reprinting is available by changing the settings of the printer's particular adjustment function.

In DM2-1810, you may print again by changing the correction of media feed.

Items that can be set depend on the printers.

In order to plot after changing adjustment values, register the changed values as [Device Adjustment] and then press the **Reprint Ripped data** button of the [Results] menu.



Reprint the printed data

Reprinting of the printed data is available.

Only RIP data is reprinted.

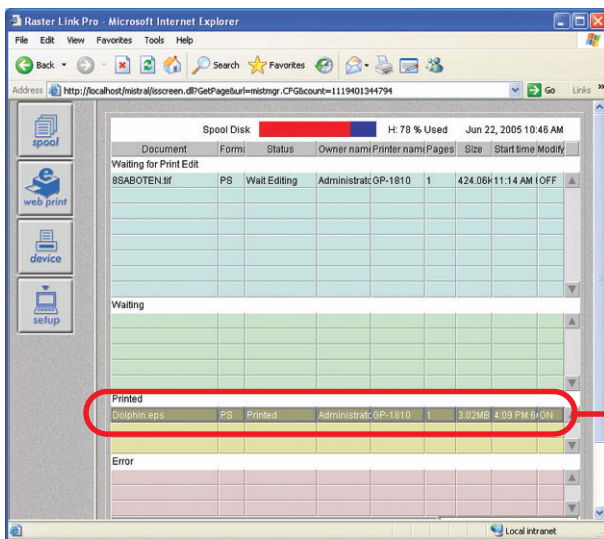
In the following cases, RIP data is not created; therefore, reprinting is not available.

- “ RIP and Print” is set at [Print Mode] sub menu of the [Print Edit] menu in the “ Job Setting” window.
- RIP is stopped by user or by errors.



- When reprinting, print conditions cannot be changed.

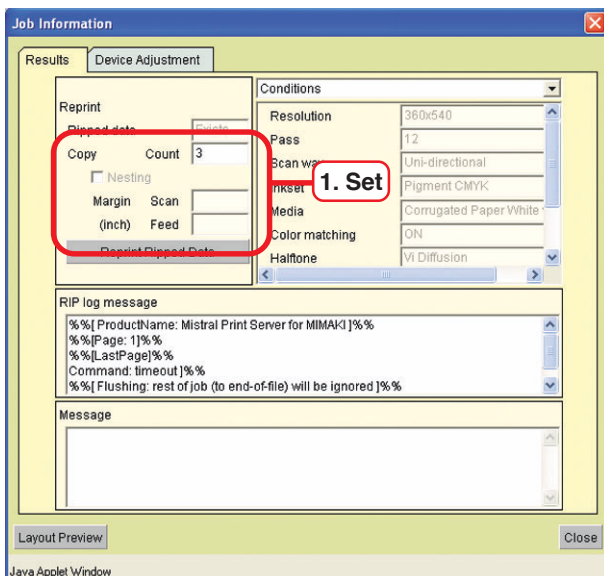
1



Double click the printed file in “Printed” job list.

“Job Information” window opens.

2

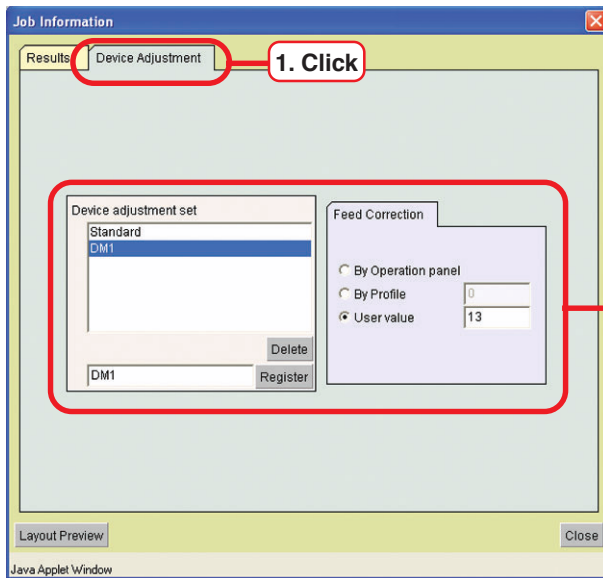


Set “Copy”, “Nesting” and “Margin” according to need.

When count of the copy is set at two or more, “Nesting” can be set.

When “Nesting” is active, “Margin” between images can be set.

3



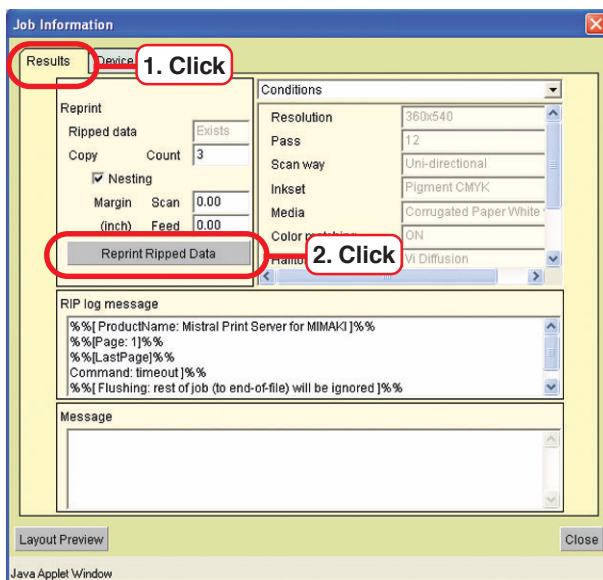
Set [Device Adjustment] if necessary.



• When setting values are changed in [Device Adjustment] menu, be sure to register or save them in “Device Adjustment”.

If the new values are not saved, the values do not become active.

4



Click [Result] menu.

Click the **Reprint Ripped Data** button.

Start printing.

Device function

Device Function is to display the ink remains and media size, and to set default print conditions. Contents of the display of Device Function differ depending on the set printers.

Device window

Correspond to the "PrintSetup - number" of detail option set in the property window of the printer driver.

Show the name of the printer that is connected with Raster Link Pro.

Show the status of the printer that is connected with Raster Link Pro.

Indicates the kind of ink.

Show the ink remains.

Sets the initial values of printing conditions. (☞ P. 61)

Deletes the history file when "Register with history file" is made effective on the [Print Record] menu. (☞ P. 53)

INK 1 SIDE			INK 2 SIDE		
1	Black	98%	A	Black	10%
2	Magenta	4%	B	Magenta	10%
3	Cyan	97%	C	Cyan	96%
4	Yellow	22%	D	Yellow	34%
5	Black	40%	E	Black	10%
6	Magenta	17%	F	Magenta	10%
7	Cyan	17%	G	Cyan	96%
8	Yellow	98%	H	Yellow	57%

Setting default of the print conditions

Default of the print conditions can be set.

Twenty combinations of default print settings can be defined.

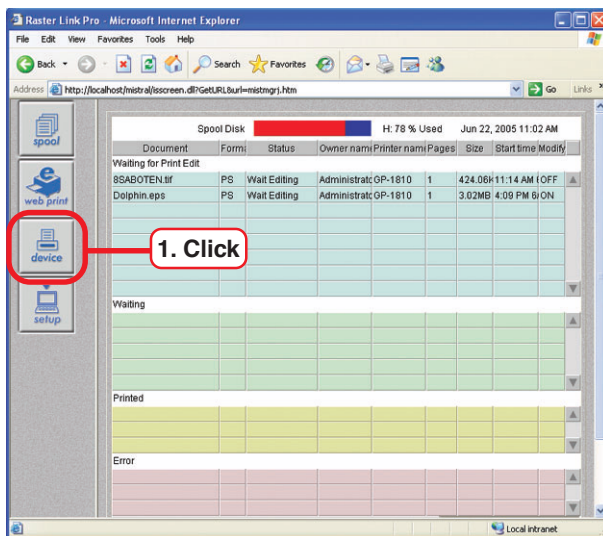
Print condition numbers correspond to the PrintSetup - number of detail option set in the property window of the printer driver.

When the print condition numbers of the printer driver are set as default, conditions of the number selected last is used.

Also, when printing is made with web print function, or with print file copy of common folder, conditions of the last selected Print condition # are used.

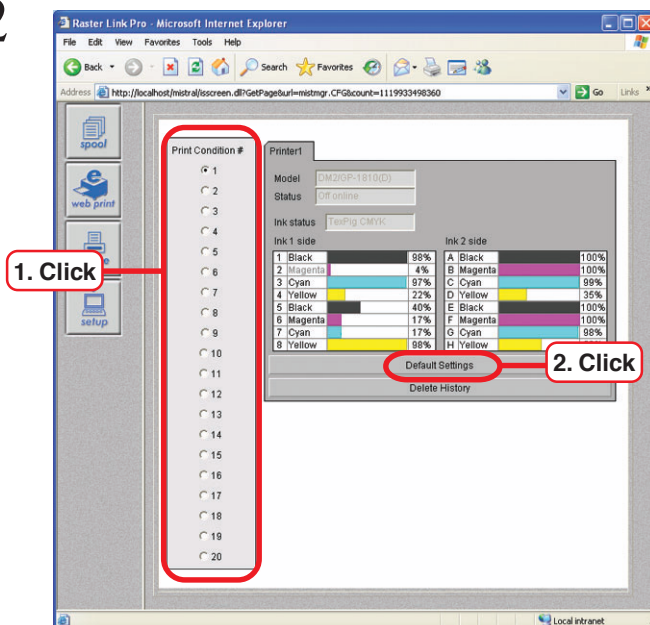
The radio button of the last selected Print condition # is effective.

1



Click **device** button.

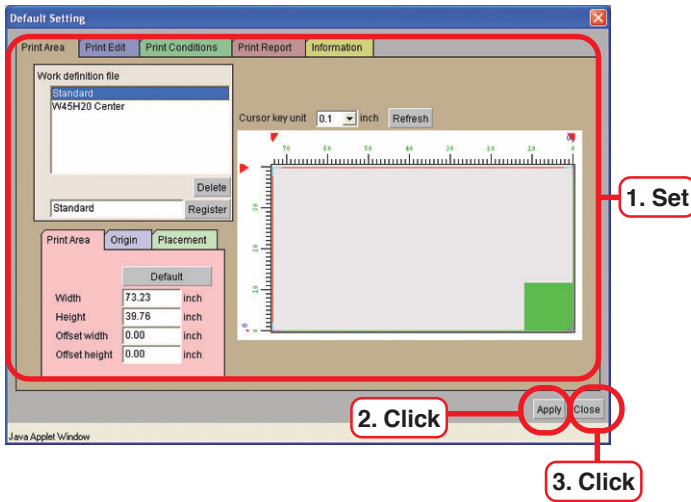
2



Click the “Print Condition #” to register.

Click the **Default Setting** button.
“Default Print Conditions” window is displayed.

3



Set each conditions.

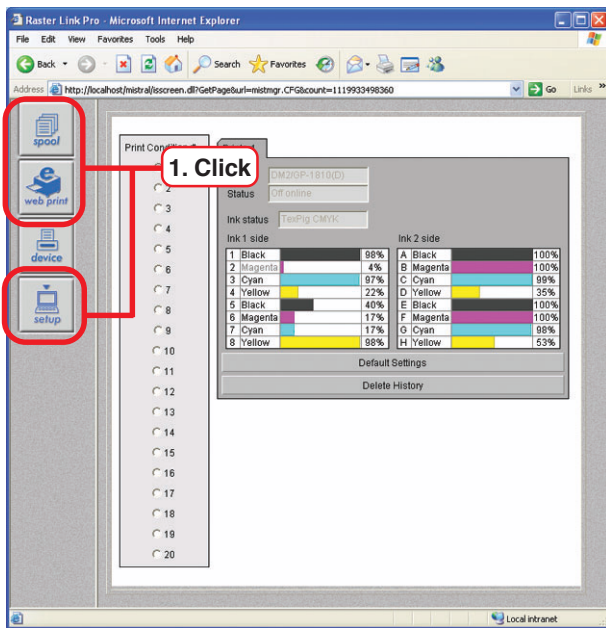
Setting items and procedure are the same as those of “Job Setting” window.

Click [Print mode].

Click button.

Click button.

4



Click a button other than button.

Print condition number selected here corresponds to the default “PrintSetup-#” of the printer driver.



D201288-1.00-08072005

Printed in Japan

© 2005 MIMAKI ENGINEERING Co., Ltd. Allright reserved.