

Thank you for purchasing our this product.
This "Print Guide" explains the printing method using this product and the attached software RIP [RasterLink] and items to be checked/set before printing.

Please prepare before use.

Before printing, the Advance preparation is required.

About system configuration (Refer to P. 2)

The explanation of the system configuration to print is described.

Prepare this product (Refer to P. 3)

This section explains how to prepare the printer.

- Connecting a PC installed RasterLink to the printer.
- Adjusting the head height.
- Set the media.
- Test print
- Feed rate correction (Media correction)
- Ink drop position correction (Dot position correction)

Prepare the Mimaki Driver (Refer to P. 4)

Install Mimaki Driver.

Prepare the RasterLink (Refer to P. 4)

The preparation of RasterLink is explained.

The printing method using a sample is explained.

For JV400-SUV: Prepare any image data, or sample images on the attached CD.
For SUJV-160: Prepare any image data.

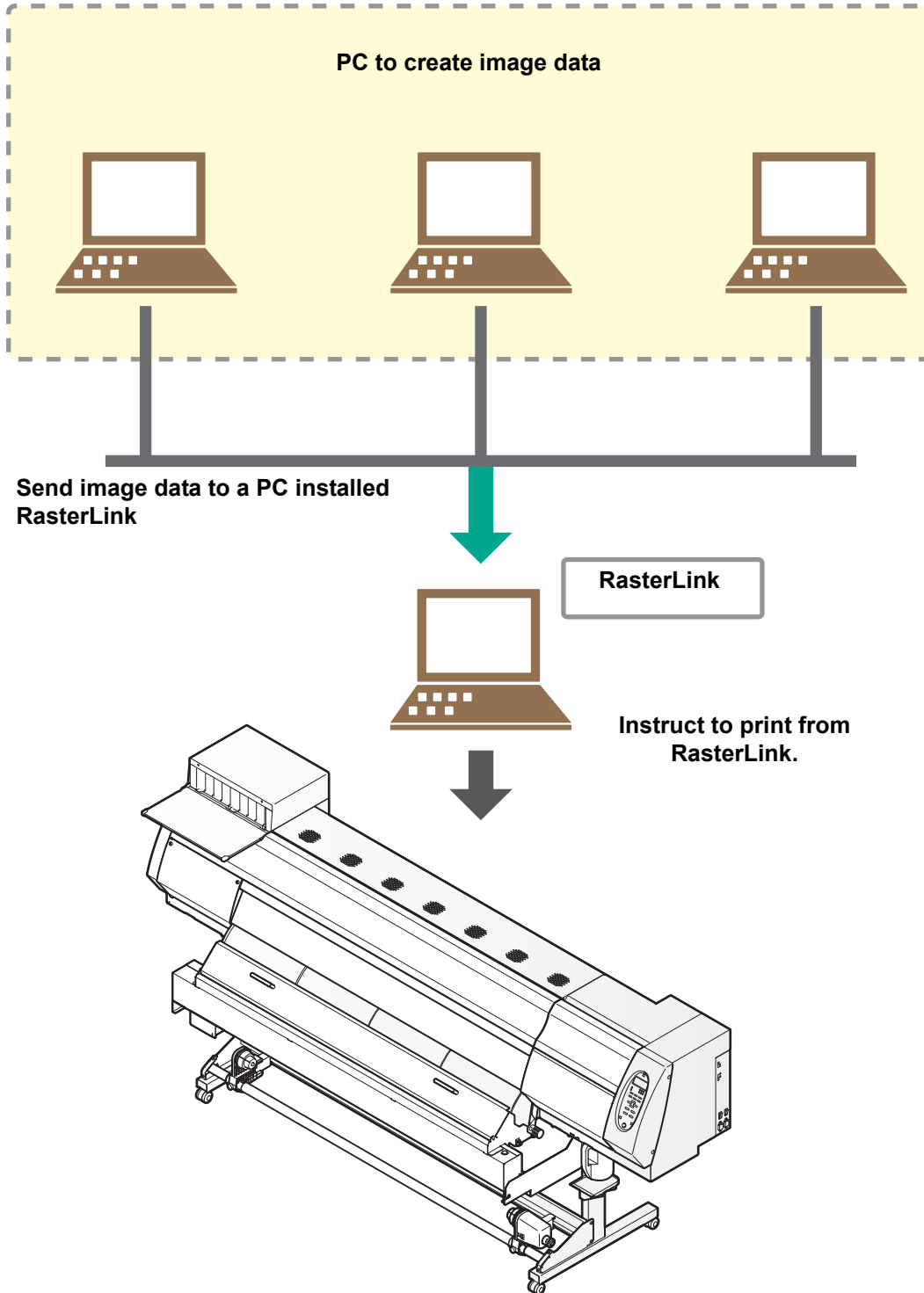
Perform printing (Refer to P. 6)

Download the profile suitable for the using condition. (Refer to P. 8)

Preparation before use

About system configuration

Instruct to print the printing data created with the application such as Illustrator or Photoshop etc. from the PC in which the RasterLink has been installed.

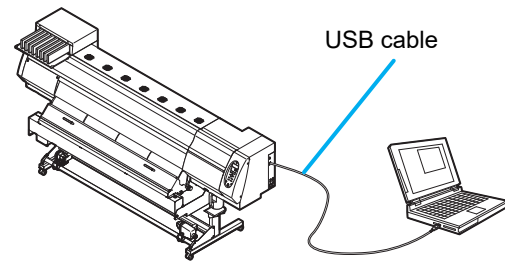


Prepare this product

Following the procedures below, prepare this product.

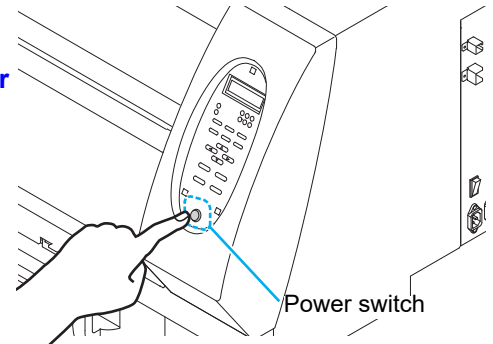
1. Connect the PC installed RasterLink to the printer.

- For details, refer to **“Connecting Cables”** in **Chapter 1** of this product Operation Manual.



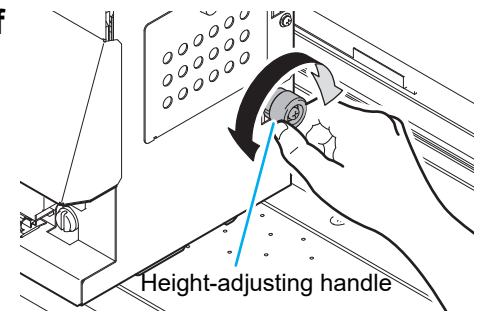
2. Turn on the printer.

- For details, refer to **“Turning the Power ON”** in **Chapter 2** of this product Operation Manual.



3. Before setting a media, check the height of print head.

- For details, refer to **“Adjusting the Head Height”** in **Chapter 2** of this product Operation Manual.



4. Set the media.

- For details, refer to **“Setting a Media”** in **Chapter 2** of this product Operation Manual.

5. Perform a test printing.

- Check if discharging defect such as nozzle clogging exists or not.
- For details, refer to **“Test Printing”** in **Chapter 2** of this product Operation Manual.

6. Perform a media correction.

- Correct the feeding rate of media.
- For details, refer to **“Setting Feed Correction”** in **Chapter 2** of this product Operation Manual.

7. Perform a dot position correction.

- Correct the ink drop position.
- For details, refer to **“Correct the ink drop position for bidirectional printing”** in **Chapter 2** of this product Operation Manual.

Prepare the Mimaki Driver

1. Check if the Mimaki Driver is installed.

- For the installation, refer to [Installation Guide of the Mimaki Driver](#).



- The Mimaki driver installation guide can be found in the Mimaki driver installer.
- About the name of the installer
- For the included Driver software CD: mkcdmenu.exe
- When downloaded from our website: mkdriver_v***.exe
- ("****" is the version number)

Prepare the RasterLink

Check that the RasterLink is prepared.

1. Check the installation status of RasterLink.

- If it is installed, RasterLink icon is displayed on the PC desktop.
- For details, refer to [Installation Guide of the RasterLink](#).

2. Check the connection with the printer.

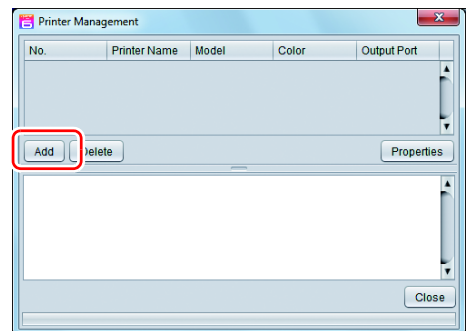
- Make sure the printer is turned on.
- Check that the printer is connected to the PC on which RasterLink is installed.

3. Double-click the icon to start the RasterLink.


- "Printer Management..." is displayed

4. Register the printer.

- If the printer has already been registered, this operation can be skipped. Proceed to Perform printing.
(1) Click [Add] in the [Printer Management...] window.

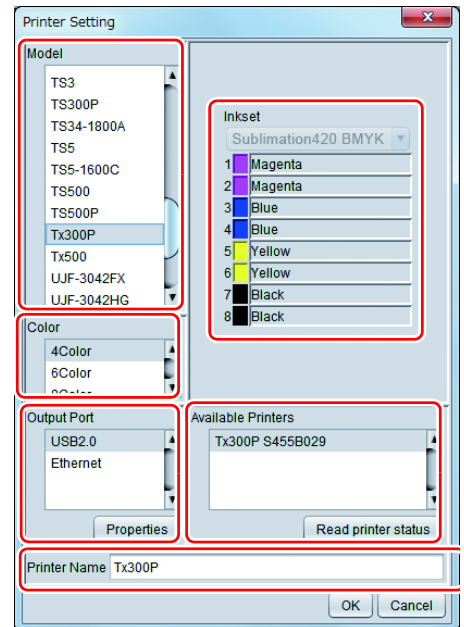


(2) Set the printer information.

- [Model] : JV400-SUV or SUJV-160
- [Color] : Select depending on the device.
- [Output Port] : USB2.0
- [Available Printers]: Select this product.
- [Printer Name] : Enter the arbitrary name
 -  The Hot folder of the name entered here is automatically created.
 - For an ink set, the information retrieved from the printer is displayed.



- It is necessary to register the printer for each ink set.



(3) Click [OK].

- The confirmation screen is displayed. Clicking [OK] starts the registration of the printer.
- The [Do you create the hot folder and printer driver?] confirmation window appears. If you want to create them, click [Yes]. (You can also create them at a later time.)

Perform printing

Here, an example using the image "sample.eps" is explained.

Important!

- Check P.2 "Preparation before use" without fail before creating a seal/a sticker.

1. Double-click the icon to start the RasterLink.

2. Select [File] - [Open] from the menu.

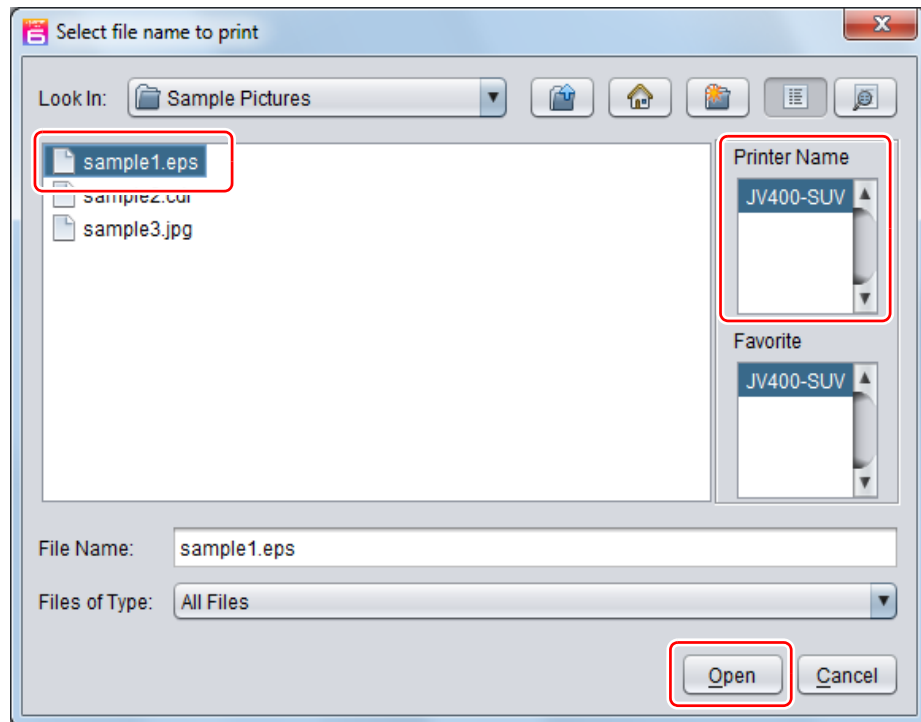
- The "Select file name to print" dialog is displayed.

About sample images

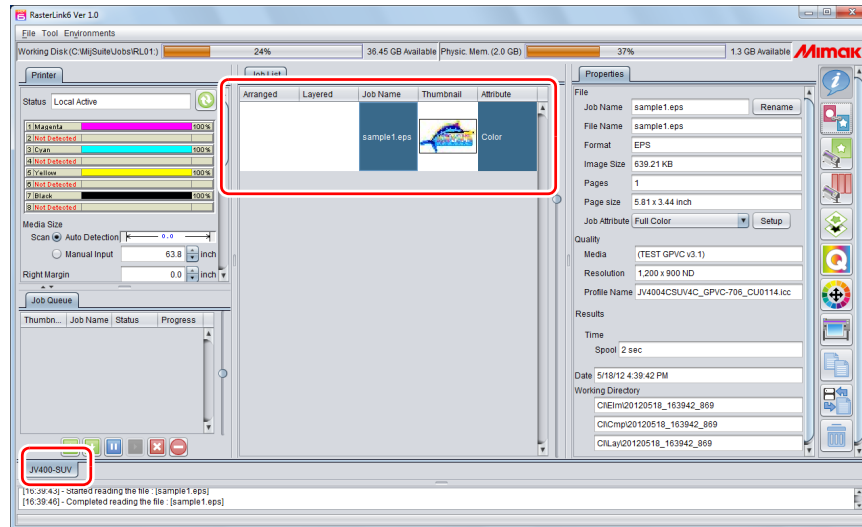
- For JV400-SUV
Prepare any image data, or use the sample images on the instruction manual CD.
 - (1) Set the CD of this product Operation Manual into the disk drive.
 - (2) Click [Print Guide / Sample data].
 - The "Sample Pictures" folder is displayed.
 - (3) Double-click on the folder.
 - Sample data is displayed.
- For SUJV-160
Prepare any image data.

3. Select the file to be printed, and click [Open].

- If more than one printer is registered, select the name set in [Printer Name] when registering the printer.
- For details on the favorites setting, refer to [Reference Guide of the RasterLink](#).
- The file is loaded. The loaded file is displayed in the main window.





4. Select the file loaded.



5. To check or edit the settings, from the Function icons displayed in the right side of the window, select the icons shown below.

- For details about each function icon, refer to [Reference Guide of the RasterLink](#).

(1) To specify the enlargement, reduction, or copy setting, select  (General Print).

(2) To select a profile that matches the medium or ink set installed in Tx300P, select  (Quality).


6. select (Execution) from the Function icons displayed in the right side of the window.

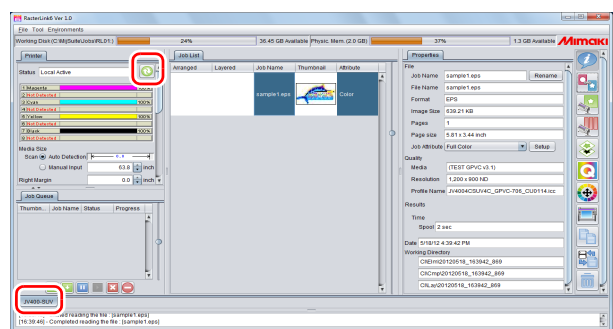
- (1) Select [RIP & Print] or [Immediate Print].
- (2) Click [Start].



- If you change the media on the printer, you need to acquire the media width from the printer. Please perform the following steps.

1. In the media window, select the [Tx300P] tab.

2. In the [Printer] section, click  (Display Latest status).



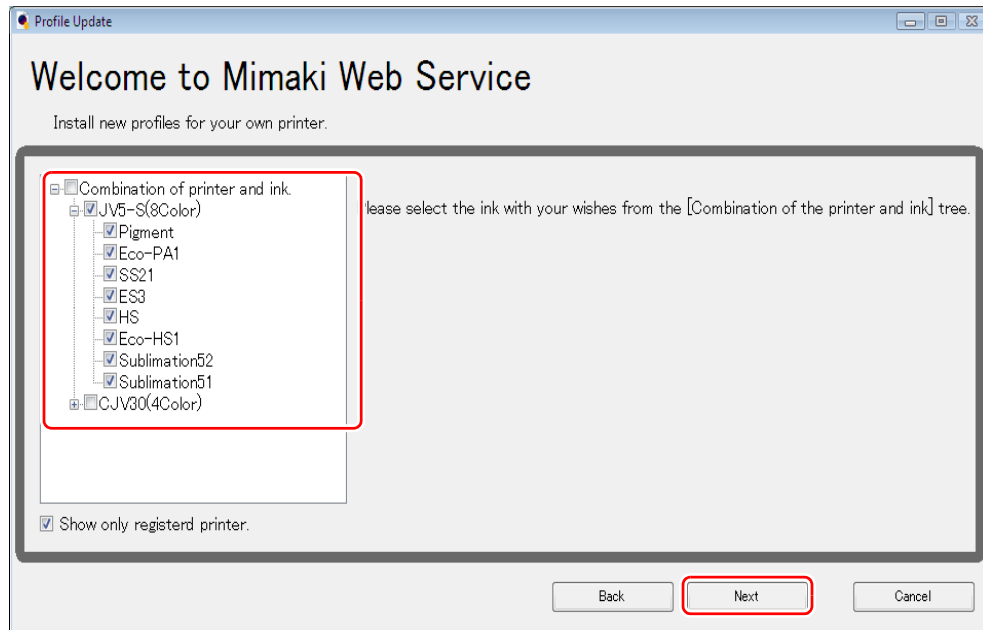
Download the profile suitable for the using condition.

Here, the download method of the profile suitable for the ink set to use is explained.
Read this by replacing the printer/ the profile with the one you use.

1. Start the Profile Update.

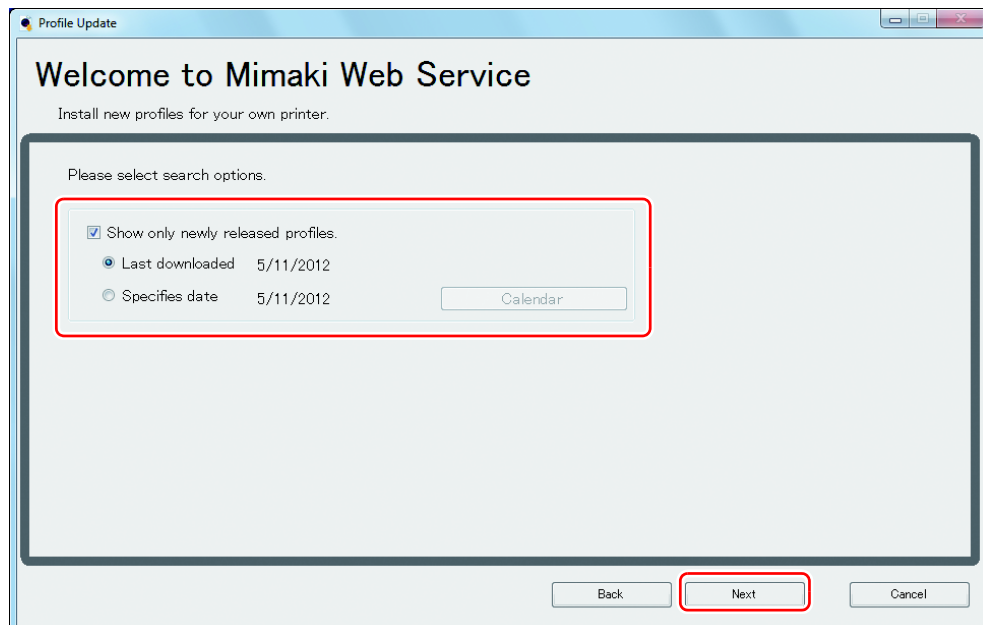
- (1) Select [RasterLink6] - [Update] - [Profile Update] from the Start menu.
 - For RasterLink6Plus, select [Mimaki RasterLink6Plus]-[Profile Update].
- (2) Click [Next].

2. Specify your printer and ink, and click [Next].



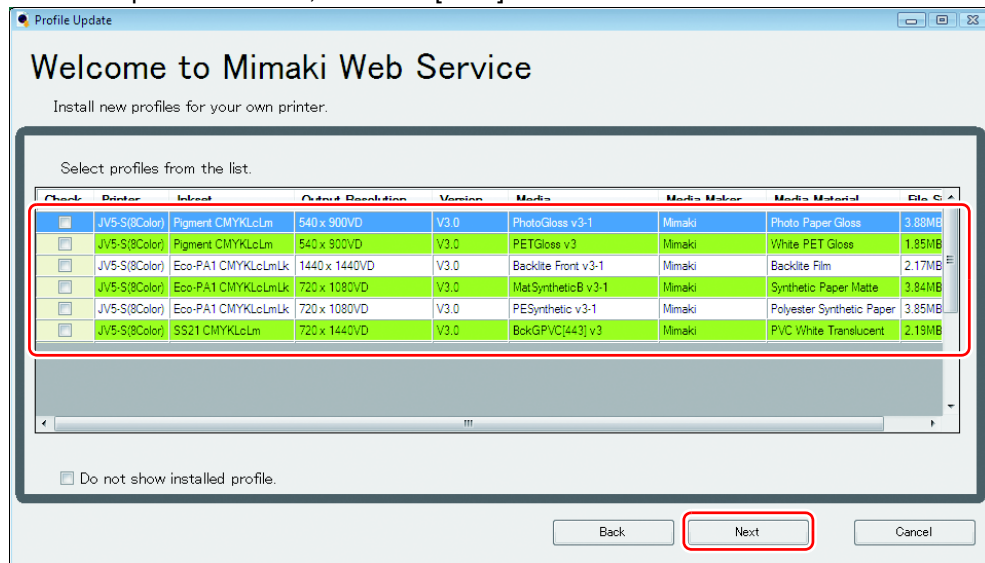
3. Specify the search option and click [Next].

- Checks if there is a profile.



4. Download the profile.

- If there are profiles that meet the settings, the list appears.
(1) Select the profile to install, and click [Next]



- (2) Click [Finish].



- The profile is installed when RasterLink is started next. Refer to [Installation Guide of the RasterLink](#) for details.
- You can also download the profile from our website. (<https://mimaki.com/>)

