

Thank you for purchasing our inkjet printer Tx300P-1800.
This "Print Guide" explains the printing method using Tx300P-1800 and the attached software RIP [RasterLink] and items to be checked/set before printing.

First, confirm the following items:

Before printing, the preparation for Tx300P-1800 and the software RIP [RasterLink] is required.
First, prepare the followings:

About system configuration (Refer to P. 2)

The explanation of the system configuration to print is described.

Prepare Tx300P-1800 (Refer to P. 3)

To use Tx300P-1800, the items below are explained:

- Connect the PC in which the software RIP [RasterLink] has been installed with Tx300P-1800.
- Turn on the power supply.
- Depending on the media to be set, adjust the print head height etc.
- Set the media.
- Perform test printing to check whether there is no nozzle clogging etc.
- Correct the feeding rate of media.
- Correct the ink drop position.

Prepare the RasterLink (Refer to P. 5)

The preparation of the software RIP [RasterLink] is explained.
For the installation method, refer to the manual of the RasterLink.

The printing method using a sample is explained.

Here, the printing method using a sample image included in the attached CD.

Perform printing (Refer to P. 7)

Download the profile suitable for the using condition. (Refer to P. 9)

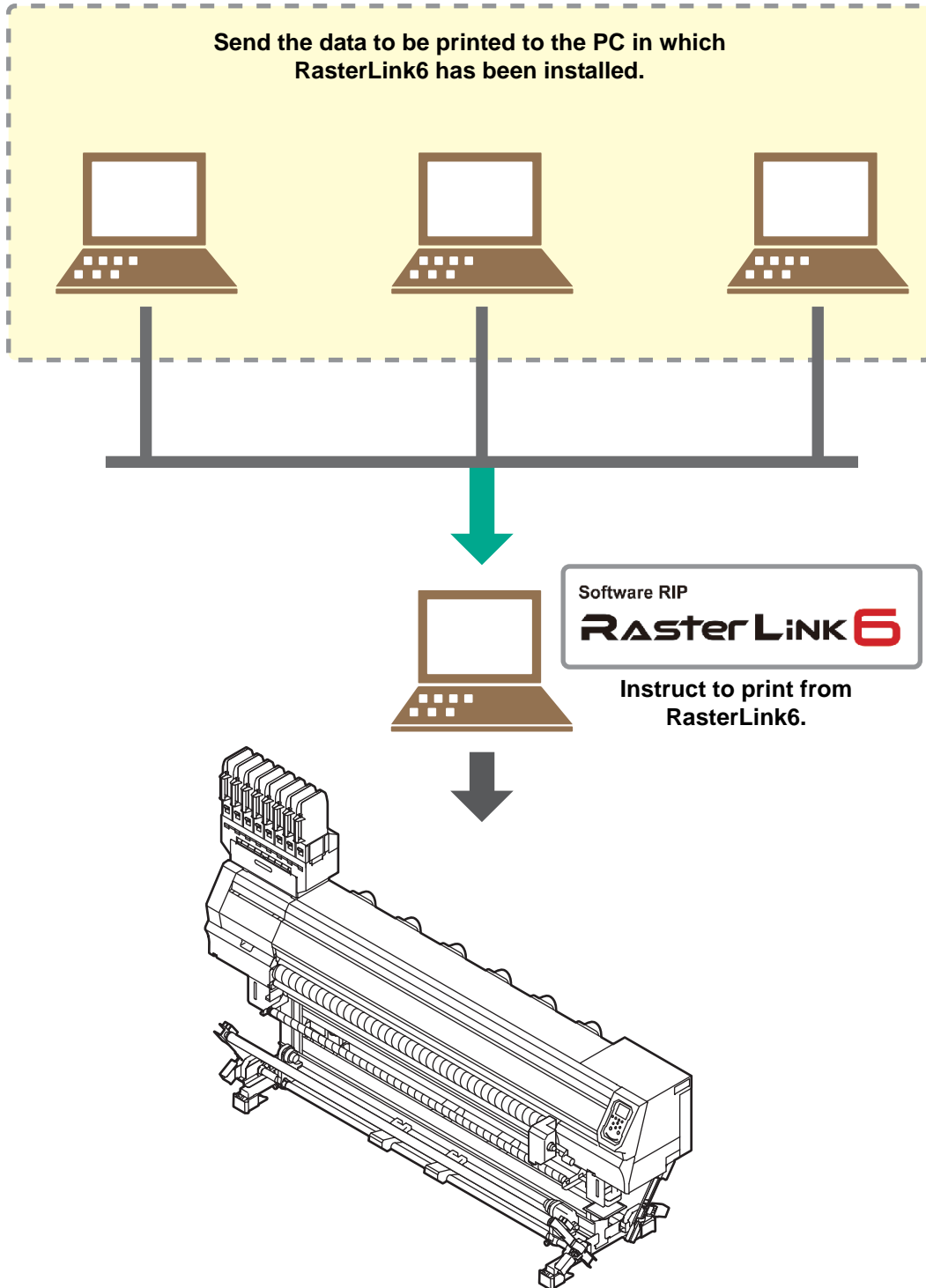
Some typical questions are described.

Typical questions (Refer to P. 11)

First, confirm the following items:

About system configuration

Instruct to print the printing data created with the application such as Illustrator or Photoshop etc. from the PC in which the attached RasterLink has been installed.

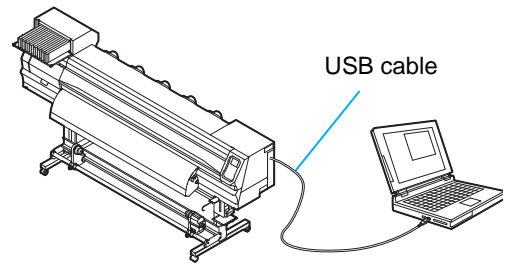


Prepare Tx300P-1800

Following the procedures below, prepare Tx300P-1800.

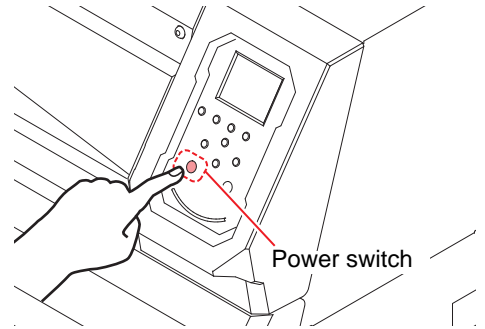
1. Connect a PC in which the attached RasterLink is installed with Tx300P-1800.

- For details, refer to [Chapter 1 “Connecting Cables” of Tx300P-1800 Operation Manual](#).



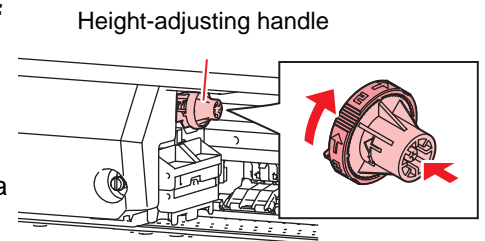
2. Turn on the power supply of Tx300P-1800.

- For details, refer to [Chapter 2 “Turning the Power ON” of Tx300P-1800 Operation Manual](#).



3. Before setting a media, check the height of print head.

- For details, refer to [Chapter 2 “Adjusting the Head Height” of Tx300P-1800 Operation Manual](#).
- Adjust the Height-adjusting lever depending on the media to be used.



4. Set the media.

- When setting the roll media : [Chapter 2 “Using the tension bar to set the roll media” of Tx300P-1800 Operation Manual](#)
[Chapter 2 “Setting roll media without using tension bar” of Tx300P-1800 Operation Manual](#)
- When setting the leaf media : [Chapter 2 “Setting leaf media” of Tx300P-1800 Operation Manual](#)

5. Perform a test printing.

- Check if discharging defect such as nozzle clogging exists or not.
- For details, refer to [Chapter 2 “Test Printing” of Tx300P-1800 Operation Manual](#).

6. Perform a media correction.

- Correct the feeding rate of media.
- For details, refer to [Chapter 2 “Setting of Media Correction” of Tx300P-1800 Operation Manual](#).

7. Perform a dot position correction.

- Correct the ink drop position.
- For details, refer to [Chapter 2 “If the Positions of Dots Shift...” of Tx300P-1800 Operation Manual](#).

Prepare the Mimaki Driver

1. Check if the attached Mimaki Driver is installed.

- For the installation, refer to [Installation Guide of the attached Mimaki Driver](#).

Prepare the RasterLink

Check that the attached software RIP [RasterLink] is prepared.

1. Check if the attached RasterLink is installed.

- If it is installed, the icon on the right is displayed on the PC desktop.
- For the installation, refer to [Installation Guide of the attached RasterLink](#).

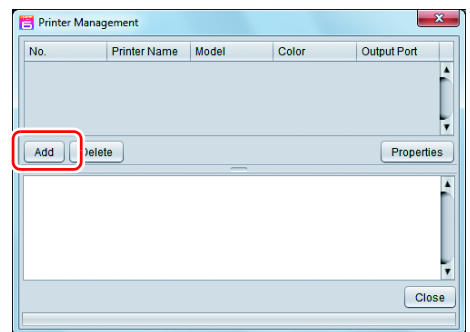


2. Check the connection with Tx300P-1800.

- (1) Is the power supply of Tx300P-1800 turned ON?
- (2) Is the PC in which the attached RasterLink is installed connected with Tx300P-1800?

3. Double-click to start the attached RasterLink.

- “Printer Management...” is displayed



4. Register the printer.

- For print in Tx300P-1800, the registration of the printer into the attached RasterLink is required.
- If the printer has already been registered, this operation can be skipped.

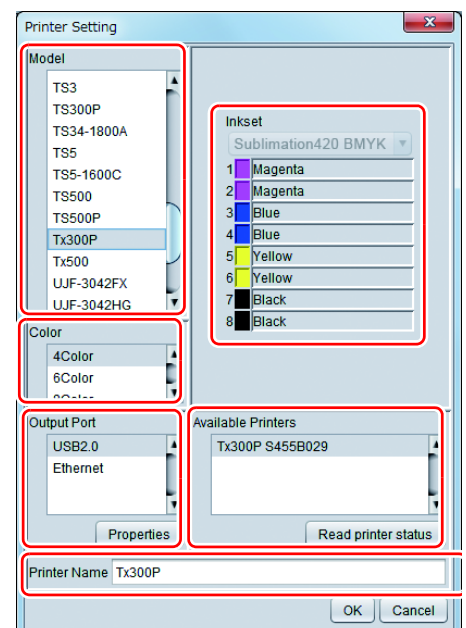
- (1) Click [Add] in the “Printer Management...” window.
- (2) Set the printer information.

- When not using Tx300P hybrid function

- Model : Tx300P
- Color : Select depending on the device.
- Output Port : USB2.0 or Ethernet
- Available Printers : Select Tx300P S455B029
- Printer Name : Enter the Tx300P



- The Hot folder of the name entered here is automatically created.
- For an ink set, the information retrieved from the printer is displayed.



● When using Tx300P hybrid function.

When setting Inkset (Sublimation 420 BMK, Textile Pigment 400 CMYK) using the hybrid function, please select "Tx300P-Hybrid" as the model name.

- Model : Tx300P-Hybrid
- Output Port : USB2.0 or Ethernet
- Available Printers : Select Tx300P
- Printer Name : Enter the Tx300P-Hybrid
- Inkset : Select according to the ink set to be used

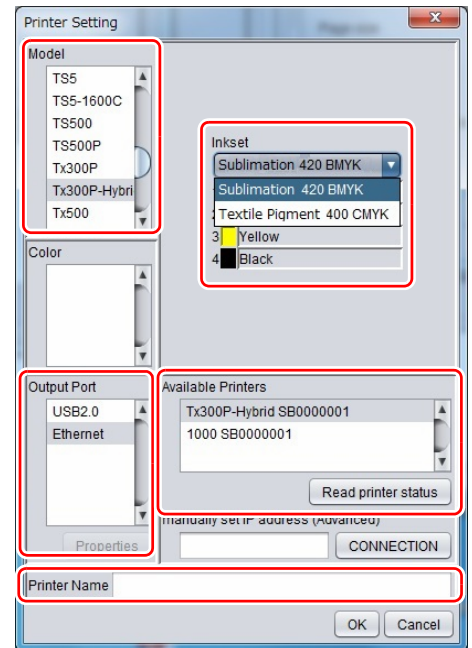


• **It is necessary to register the printer for each ink set.**

- ① Select "Sublimation 420 BMK" in the inkset box and register the printer.
- ② Select "Textile Pigment 400 CMYK" in the inkset box and register the printer.



- The Hot folder of the name entered here is automatically created.
- For an ink set, the information retrieved from the printer is displayed.



(3) Click [OK].

- The confirmation screen is displayed.
Clicking [OK] starts the registration of the printer.

Perform printing

Here, the printing method using a sample image included in the CD of the Tx300P-1800 Operation Manual.



- Check **P. 2 to P. 5** “**First, confirm the following items:**” without fail before creating a seal/a sticker.

1. Double-click to start the attached RasterLink.

- The main window of the attached RasterLink is displayed.

2. Set the CD of Tx300P-1800 Operation Manual into the disk drive.

3. Click [Print Guide / Sample data].

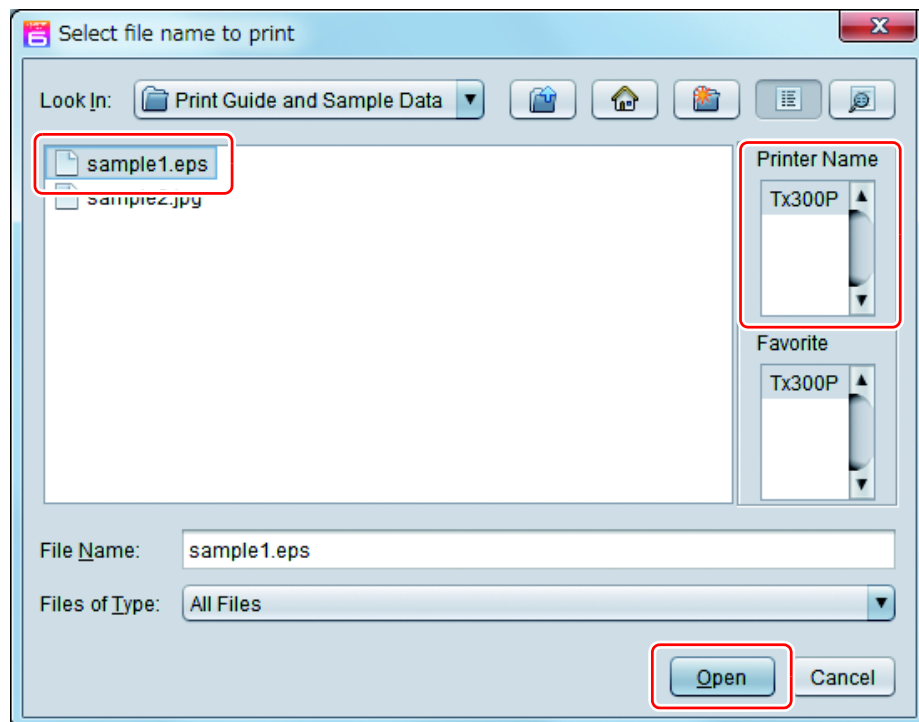
- The “Print Guide and Sample Data” dialog is displayed.

4. To select the data you want to print from the RasterLink, select [File], and then [Open] from the menu.

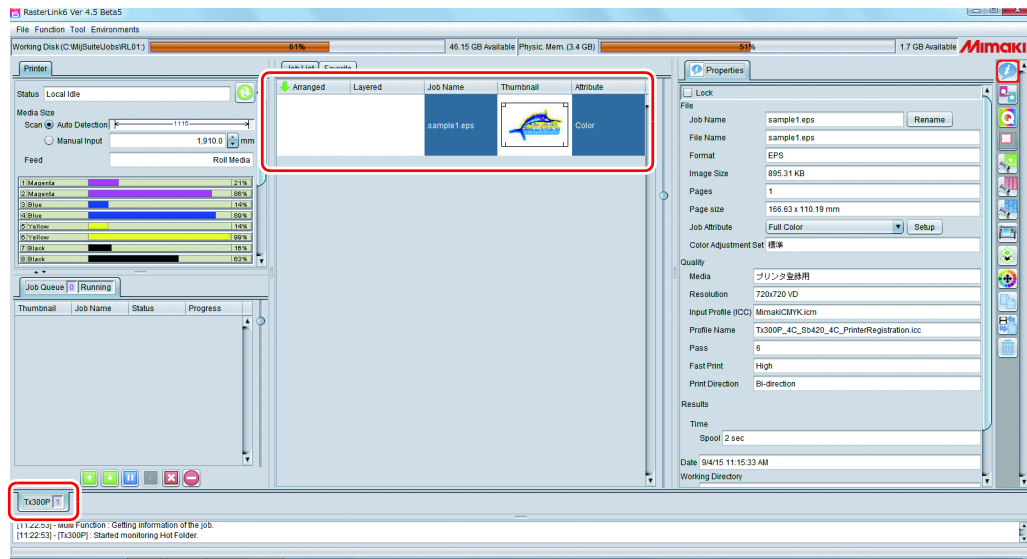
- The “Select file name to print” dialog is displayed.

5. Select the file to be printed, and click [Open].

- If more than one printer is registered, select [Tx300P] from [Printer Name].
- For details on the favorites setting, refer to [Reference Guide of the attached RasterLink](#).
- The file is loaded. The loaded file is displayed on the [Tx300P] tab in the main window.





6. Select the file loaded into the [Tx300P] tab.



7. To check or edit the settings, from [Function icons] displayed in the right side of the window, select the icons shown below.

- For details about each function icon, refer to [Reference Guide of the attached RasterLink](#).

(1) To specify the enlargement, reduction, or copy setting, select  (General Print).

(2) To select a profile that matches the medium or ink set installed in Tx300P, select  (Quality).


8. To print a file, select (Execution) from the [Function icons] displayed in the right side of the window.

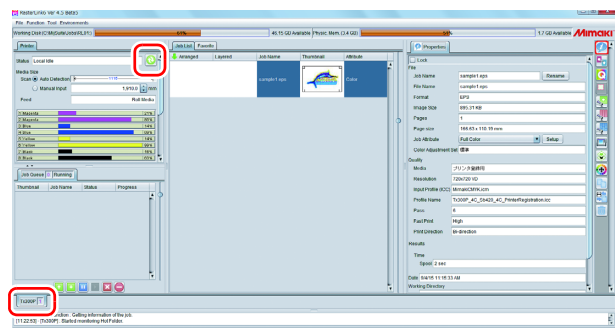
- (1) Select [RIP & Print] or [Immediate Print].
- (2) Click [Start].



- If you have replaced a medium in Tx300P-1800, perform the following steps to acquire the width of the medium from the printer.

1. In the media window, select the [Tx300P] tab.

2. In the [Printer] section, click .



Download the profile suitable for the using condition.

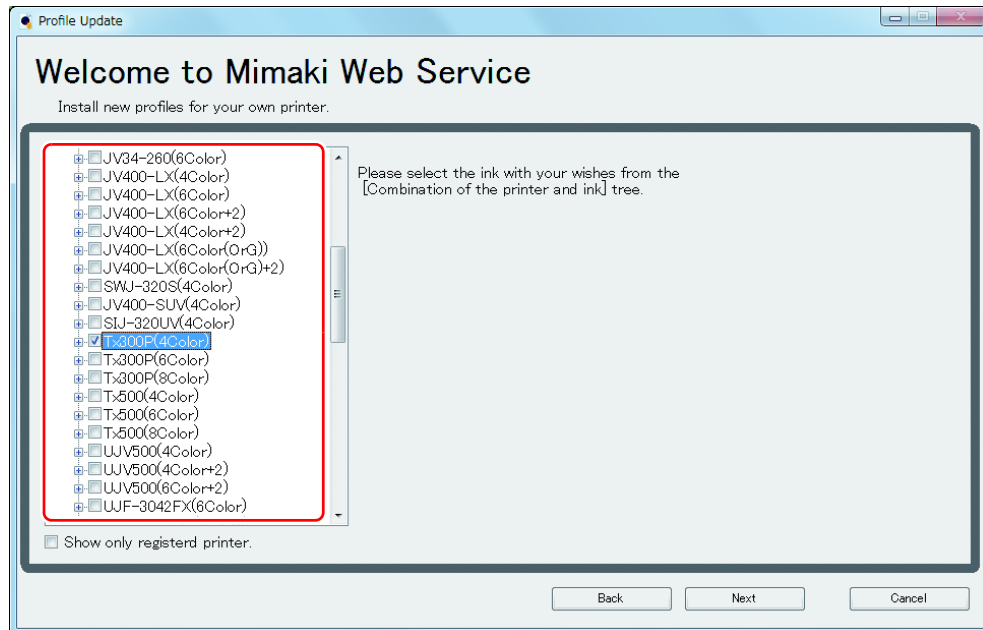
Here, the download method of the profile suitable for the ink set to use is explained.
Read this by replacing the printer/ the profile with the one you use.

1. Start the Profile Update.

- (1) Select [RasterLink6] - [Update] - [Profile Update] from the Start menu.
- (2) Click [Next].

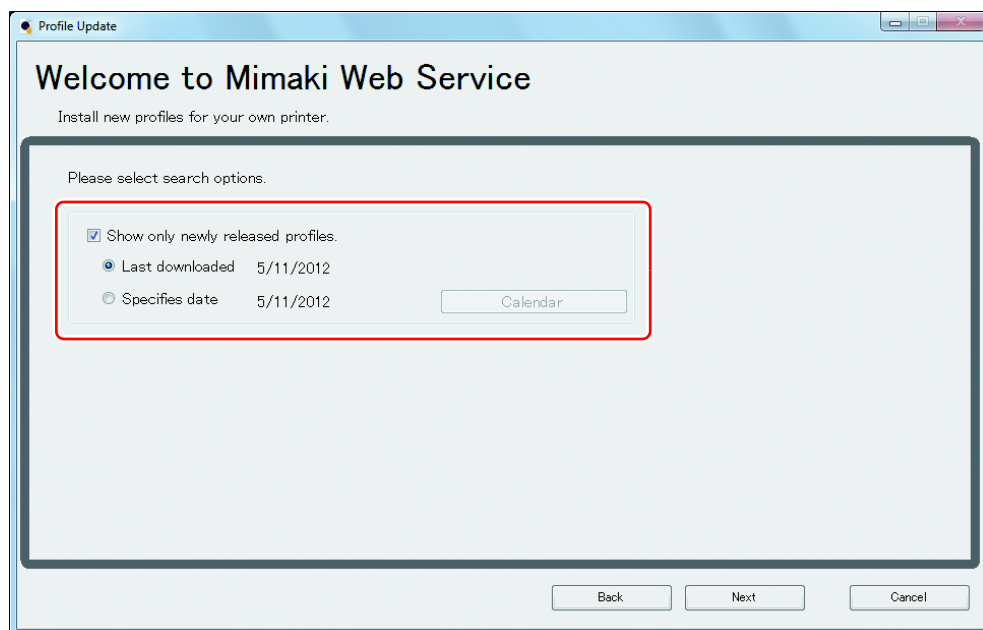
2. Specify the printer and ink to install a profile.

- After selecting, click [Next].



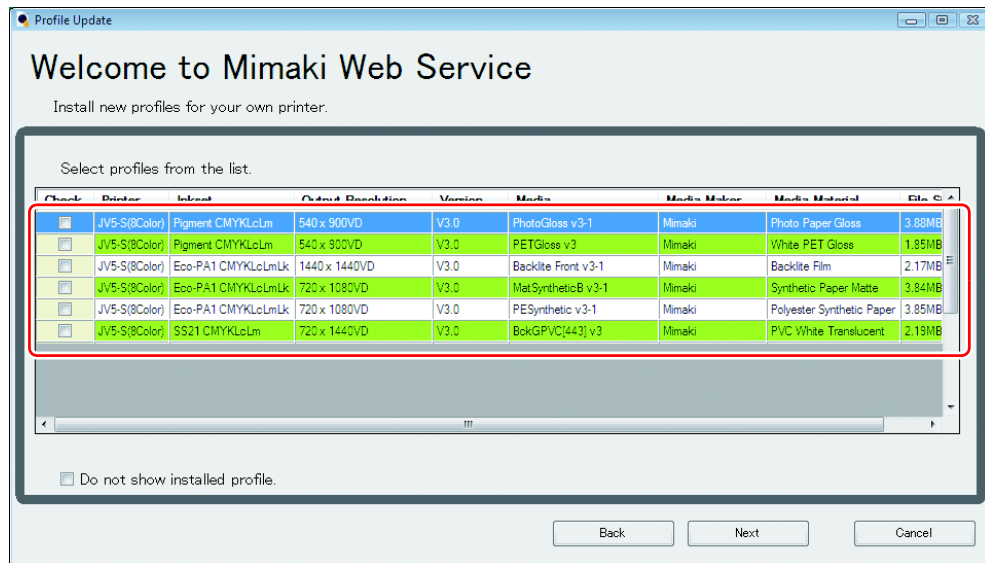
3. Specify the option.

- (1) After selecting, click [Next].
- (2) Connect the Internet and check the profile.



4. Download the profile.

- If there are profiles that meet the settings, the list appears.
 - (1) Select the profile to install, and click [Next]
 - (2) Click [Finish] to end the download procedure.



- The profile is installed when RasterLink6 is started next. Refer to **Installation Guide of the attached RasterLink** for details.
- You can also download the profile from our website. (<http://mimaki.com/>)

Typical questions

The answers to the questions/ the troubles frequently asked by the customer are provided.

About errors

● “Replace a Wiper” is displayed

Time for replacement of the wiper has come.

Replace the wiper by following the procedures in [Chapter 4 “Replacing the wiper” of Tx300P-1800 Operation Manual](#).

● “Waste ink full” is displayed

The waste ink tank is full. Replace the waste ink tank by following the procedures in [Chapter4 “If a Waste Ink Tank Confirmation Message Appears” of Tx300P-1800 Operation Manual](#).

Supplied items

Purchase them in a distributor in your district or our office.

Name of part	Type of Ink	Part codes
Cleaning Liquid 03 MAINTENANCE KIT	Sublimation dye ink :Sb420 Sublimation dye ink :Sb421 Disperse dye ink :Dd400 Acid-dye ink :Ac400 Reactive-dye ink :Rc400	ML003-2-K1
	Textile pigment ink :TP400 Hybrid ink : Sb420+TP400 Hybrid ink : Sb421+TP400	C-ML012-Z-K1-1-KW

Name of part	Part codes
Waste ink tank (2L)	SPA-0246
Wiper kit 300TS	SPA-0271
Clean stick for the surroundings of the head 50pcs	SPC-0527
CP pat set	SPA-0269
Ink receiving spacer	SPA-0248
300 fan filter	SPC-0774
Pinch rollers	SPA-0275

